



# PARTS CATALOGUE

## XTZ250Z (2DD3) COLOMBIA, MEXICO

---



1P2DD-200S1

( )

XTZ250Z  
CATALOGO DE REPUESTOS  
©2014 por Yamaha Motor do Brasil Ltda.  
1ª edición, octubre 2014  
Todos los derechos reservados.  
Toda reproducción o uso no autorizado  
sin el consentimiento escrito de  
Yamaha Motor do Brasil Ltda.  
quedan expresamente prohibidos  
Impreso en Brasil.

XTZ250Z  
PARTS CATALOGUE  
©2014 by Yamaha Motor do Brasil Ltda.  
1st edition, October 2014  
All rights reserved.  
Any reprinting or unauthorized use  
without the written permission of  
Yamaha Motor do Brasil Ltda.  
is expressly prohibited.  
Printed in Brazil.

# PROLOGO

Este catálogo de repuestos corresponde a las piezas para el o los modelos que figuran en la página de portada. Al formular el pedido de repuestos, se ruega citar este catálogo y especificar correctamente el número y el nombre de las piezas.

1. Las modificaciones y agregados que se hayan realizado después de la edición de este Catálogo de Repuestos, serán anunciados en las Informaciones de Recambios. Es recomendable que se hagan las correcciones necesarias en el Catálogo de Repuestos de acuerdo con las Informaciones de Recambios.

2. Abreviaciones

En este. Catálogo de Repuestos se emplean las siguientes abreviaciones.

“UR” Usar el número de partes especificado

“UN” Usar la cantidad necesaria

“AP” Piezas sustitutivas

“LM” Fabricación local (Hay que pedir los repuestos en las cercanías)

“F#” N° de bastidor (N° aplicable a la máquina)

“O/S” Sobredimensionado

3. La cantidad de componentes para el montaje

- Los componentes, suministrados como conjunto, se describen con un punto (.) que precede al nombre del parte como se indica a continuación.
- La numeración que aparece a la derecha de cada descripción indica la cantidad de partes por cada unidad de conjunto.

CODIGO N°	DESCRIPCION	CANT.	OBSERVACIONES
2F5-83310-60	ENSAMBLAJE DE LA LUZ	2	
115-83311-60	.BOMBILLA (6V-18W)	1	

4. Los colores de los componentes se indican como sigue en la columna de “OBSERVACIONES”.

CODIGO N°	DESCRIPCION	CANT.	OBSERVACIONES
2N4-24110-00-X5	COMP. DEL TANQUE	2	MXR
3J1-24240-10	.GRAFICO, DEL TANQUE	1	PARA MXR

5. Debe tenerse en cuenta que las ilustraciones sirven como guía para la búsqueda de los números de partes y no deben usarse para el montaje. Durante el montaje, se recomienda usar el manual de taller correspondiente.

6. EL asterisco (\*) antes del número de referencia indica los elementos modificados después de la primera edición.

# FOREWORD

This Parts Catalogue is related to the parts for the model(s) on the cover page. When you are ordering replacement parts, please refer to this Parts Catalogue and quote both part numbers and part names correctly.

1. Modifications or additions which have been made after the issue of the Parts Catalogue will be announced in the Parts News.

It is advisable that you make the necessary corrections to the Parts Catalogue according to the Parts News.

2. Abbreviations

The following abbreviations are used in this Parts Catalogue.

“UR” Use specified parts number.

“UN” Use as many as needed.

“AP” Alternate Parts

“LM” Locally Made (Parts need to be ordered locally)

“F#” Frame No. (Applicable machine No.)

“O/S” Over Size

3. The number of components for assembly

- Parts, which are to be supplied in an assembly, are listed with a dot (.) in front of the part name as shown below.
- The numeral appearing to the right of each component part indicates the quantity of parts for each assembly unit.

PART NO.	DESCRIPTION	Q'TY	REMARKS
2F5-83310-60	FRONT FLASHER LIGHT ASSY	2	
115-83311-60	.BULB (6V-18W)	1	

4. Applicable colours of graphics are represented in the “REMARKS” as shown below.

PART NO.	DESCRIPTION	Q'TY	REMARKS
2N4-24110-00-X5	FUEL TANK COMP.	2	MXR
3J1-24240-10	.GRAPHIC, FUEL TANK	1	FOR MXR

5. Note that the illustrations for reference in finding parts numbers are not to be used for assembling. When assembling, please use the applicable service manual.

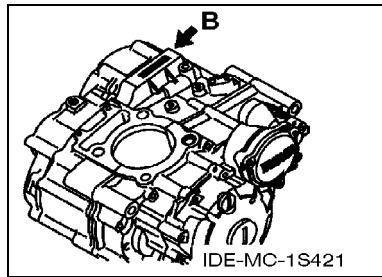
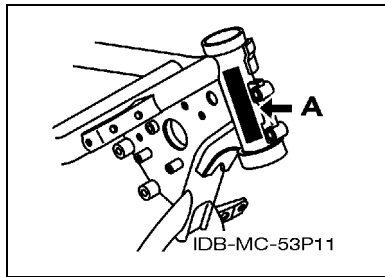
6. The asterisk (\*) before a reference number indicates modified items after the first edition.

# PROLOGO

## 7. Números de serie

Nº de Serie del bastidor

Nº de Serie del motor



## 8. Códigos de color aplicables (El símbolo (\*) muestra el color de modelo.)

Abreviatura	Nombre de color	Código de color
BWM1(*)	BLUISH WHITE METALLIC 1	1357
DPBMC(*)	DEEP PURPLISH BLUE METALLIC C	0564
MBL2	MAT BLACK 2	0582
MNM3(*)	MAT GRAY METALLIC 3	1278
SL	SILVER	0035
VRC1(*)	VIVID RED COCKTAIL 1	0121
YB	YAMAHA BLACK	0033

## 9. Nº de serie inicial aplicable

Nº de Serie del bastidor

Nº de serie	Nombre de la columna de cantidades	Código de Modelo
9C6KG0648F0000800	XTZ250Z	2DD3

Nº de Serie del motor

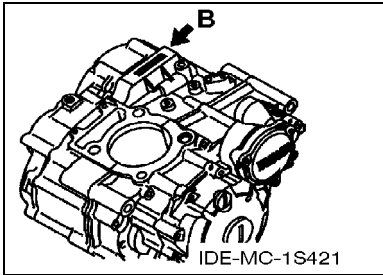
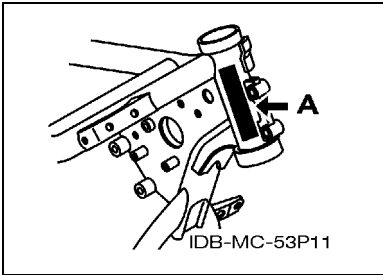
Nº de serie	Nombre de la columna de cantidades	Código de Modelo
G3B4E-000800	XTZ250Z	2DD3

# FOREWORD

7. Applicable Serial No.

Frame Serial No.

Engine Serial No.



8. Applicable Colour Code (The (\*) mark shows Model colour.)

Abbreviation	Colour Name	Colour Code
BWM1(*)	BLUISH WHITE METALLIC 1	1357
DPBMC(*)	DEEP PURPLISH BLUE METALLIC C	0564
MBL2	MAT BLACK 2	0582
MNM3(*)	MAT GRAY METALLIC 3	1278
SL	SILVER	0035
VRC1(*)	VIVID RED COCKTAIL 1	0121
YB	YAMAHA BLACK	0033

9. Applicable Starting Serial No.

Frame Serial No.

Serial No.	Name Of Q'ty Column	Model Code
9C6KG0648F0000800	XTZ250Z	2DD3

Engine Serial No.

Serial No.	Name Of Q'ty Column	Model Code
G3B4E-000800	XTZ250Z	2DD3

# CONTENIDO

## MOTOR

CULATA DE CILINDRO .....	1
CILINDRO .....	3
CIGUENAL & PISTON .....	4
VALVULA .....	6
ARBOL DE LEVAS & CADENA .....	7
BOMBA DE ACEITE .....	8
COLECTOR DE ACEITE .....	9
ADMISION .....	10
ADMISION 2 .....	12
DESCARGA .....	13
CARTER .....	14
CUBIERTA DE CARTER 1 .....	15
EMBRAGUE DEL ARRANQUE .....	17
EMBRAGUE .....	18
TRANSMISION .....	20
LEVA DE CAMBIO & HORQUILLA .....	22
EJE DE CAMBIO & PEDAL .....	23

## SHASIS

CUADRO .....	24
GUARDABARRO .....	25
CUBIERTA LATERAL .....	26
BRAZO TRASERO .....	28
SUSPENSION TRASERO .....	29
DIRECCION .....	30
HORQUILLA DELANTERA .....	31
DEPOSITO DE COMBUSTIBLE .....	33
ASIENTO .....	35
RUEDA DELANTERA .....	36
CALIBRE FRENO DELANTERA .....	37
RUEDA TRASERA .....	38
CALIBRE FRENO TRASERA .....	40
MANILLAR & CABLE .....	41
CILINDRO MAESTRO DELANTERO .....	42
SOPORTE & APOYAPIE .....	43
CILINDRO MAESTRO TRASERO .....	45
BOVEDA 1 .....	47
GENERADOR .....	49
MOTOR DE ARRANQUE .....	50
LUZ DE DESTELLADOR .....	51
MEDIDOR .....	52

FARO DELANTERO .....	53
LUZ DE COLA .....	54
INTERRUPTOR DE MANILLAR&PALANC .....	55
EQUIPO ELECTRICO 1 .....	56
EQUIPO ELECTRICO 2 .....	58
CALCOMANIA & EMBLEMA 1 .....	59
CALCOMANIA & EMBLEMA 2 .....	60
PARTES OPCIONALES 1 .....	61
PARTES OPCIONALES 2 .....	62
PARTES OPCIONALES 3 .....	63

## INDICE

INDICE NUMERICO .....	64
-----------------------	----

# CONTENTS

## ENGINE

CYLINDER HEAD .....	1
CYLINDER .....	3
CRANKSHAFT & PISTON .....	4
VALVE .....	6
CAMSHAFT & CHAIN .....	7
OIL PUMP .....	8
OIL COOLER .....	9
INTAKE .....	10
INTAKE 2 .....	12
EXHAUST .....	13
CRANKCASE .....	14
CRANKCASE COVER 1 .....	15
STARTER CLUTCH .....	17
CLUTCH .....	18
TRANSMISSION .....	20
SHIFT CAM & FORK .....	22
SHIFT SHAFT .....	23

## CHASSIS

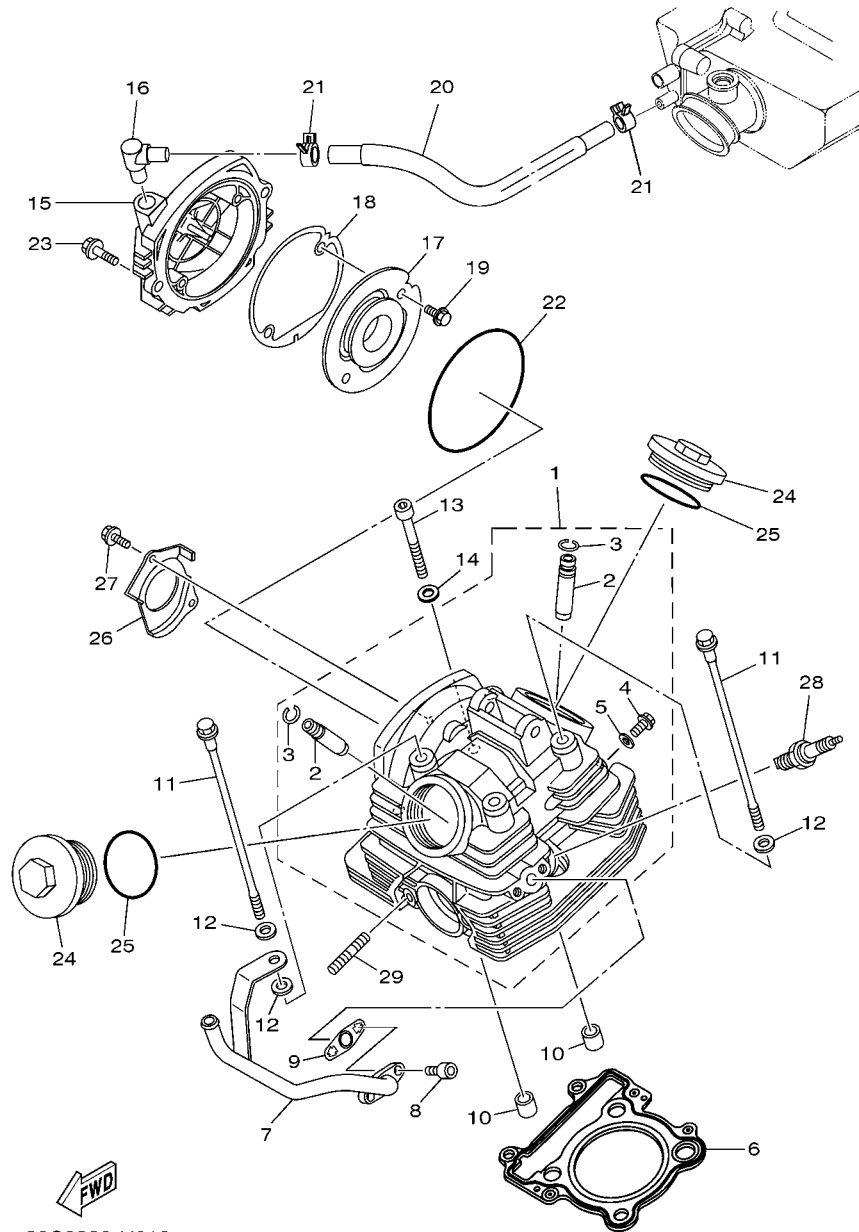
FRAME .....	24
FENDER .....	25
SIDE COVER .....	26
REAR ARM .....	28
REAR SUSPENSION .....	29
STEERING .....	30
FRONT FORK .....	31
FUEL TANK .....	33
SEAT .....	35
FRONT WHEEL .....	36
FRONT BRAKE CALIPER .....	37
REAR WHEEL .....	38
REAR BRAKE CALIPER .....	40
STEERING HANDLE & CABLE .....	41
FRONT MASTER CYLINDER .....	42
STAND & FOOTREST .....	43
REAR MASTER CYLINDER .....	45
COWLING 1 .....	47
GENERATOR .....	49
STARTING MOTOR .....	50
FLASHER LIGHT .....	51
METER .....	52

HEADLIGHT .....	53
TAILLIGHT .....	54
HANDLE SWITCH & LEVER .....	55
ELECTRICAL 1 .....	56
ELECTRICAL 2 .....	58
GRAPHIC & EMBLEM 1 .....	59
GRAPHIC & EMBLEM 2 .....	60
OPTIONAL PARTS 1 .....	61
OPTIONAL PARTS 2 .....	62
OPTIONAL PARTS 3 .....	63

## INDEX

NUMERICAL INDEX .....	64
-----------------------	----





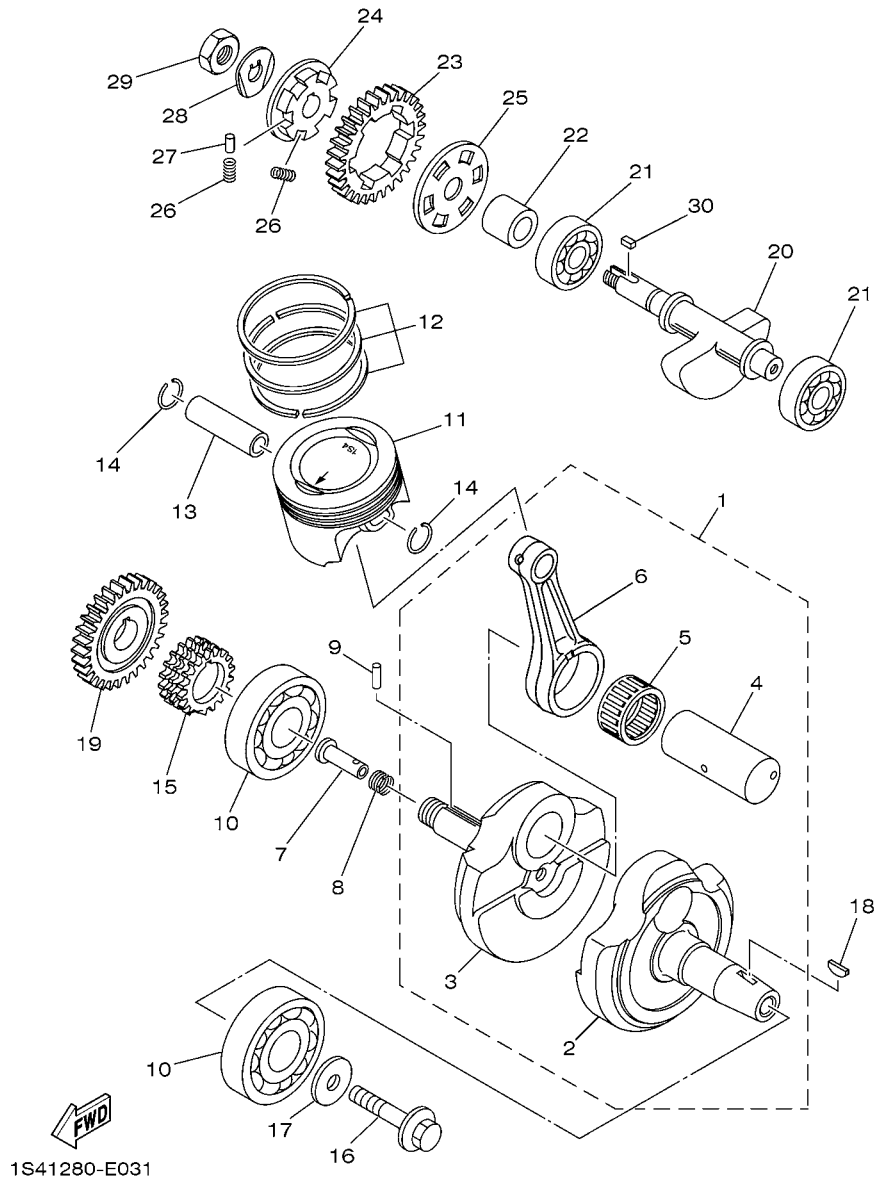
20C2280-H010

FIG. 1 CULATA DE CILINDRO CYLINDER HEAD

REF. Nº	CODIGO Nº PART NO.	DESCRIPCION DESCRIPTION	20D3				OBSERVACIONES REMARKS
1	1S4-E1111-00	CULATA CILINDRO 1 HEAD, CYLINDER 1	1				
2	5H0-11133-11	.GUIA DE VALVULA 1 .GUIDE, VALVE 1	2				
3	93440-10085	.PRESILLA REDONDA .CIRCLIP	2				
4	90153-06029	.TORNILLO HEXAGONAL .SCREW, HEXAGON	1				
5	90430-06014	.JUNTA .GASKET	1				
6	1S4-11181-10	JUNTA, DE CULATA 1 GASKET, CYLINDER HEAD 1	1				
7	4B4-E4871-00	TUBO DE COMBUSTIBLE PIPE 1	1				
8	9131L-06016	PERNO BOLT	2				
9	1S4-E4815-00	EMPAQUE GASKET	1				
10	99530-14016	PASADOR, DE ESPIGA PIN, DOWEL	2				
11	90105-08117	TORNILLO BOLT, FLANGE	4				
12	90201-08609	ARANDELA PLANA WASHER, PLATE	5				
13	91314-08045	TORNILLO ALLEN BOLT, HEXAGON SOCKET HEAD	2				
14	90201-06018	ARANDELA PLANA WASHER, PLATE	2				
15	1S4-E1185-01	CUBIERTA CULATA CIL.LAT.3 COVER, CYLINDER HEAD SIDE 3	1				
16	12B-E5371-00	RESPIRADERO BREATHER	1				
17	1S4-E1165-01	PLACA RESPIRADERO PLATE, BREATHER	1				
18	1S4-E1196-00	EMPAQUE DE CULATA GASKET, CYLINDER HEAD SIDE	1				
19	9502M-06010	PERNO, DE BRIDA BOLT, FLANGE	2				
20	12B-E1166-00	TUBO RESPIRADERO 1 PIPE, BREATHER 1	1				
21	90467-12053	PRESILLA CLIP	2				
22	93211-05471	ANILLO O O-RING	1				
23	95024-06020	PERNO, BRIDA BOLT, FLG.(SMALL HEAD)	2				
24	5XT-11186-00	CUBIERTA CULATA CIL.LAT.2 COVER, CYLINDER HEAD SIDE 2	2				
25	93210-54001	ANILLO O O-RING	2				
26	1S4-E111F-00	PLACA PLATE	1				
27	9502M-06012	PERNO, DE BRIDA BOLT, FLANGE	2				







1S41280-E031

FIG. 3 CIGUENAL & PISTON

CRANKSHAFT & PISTON

REF. Nº	CODIGO Nº PART NO.	DESCRIPCION DESCRIPTION	2003				OBSERVACIONES REMARKS
1	1S4-E1400-11	CIGUENAL COMPLETO CRANKSHAFT ASSY	1				
2	1S4-E1412-00	.MANIVELA 1 .CRANK 1	1				
3	44C-E1422-00	.MANIVELA 2 .CRANK 2	1				
4	1S4-11681-00	.PASADOR MANIVELA 1 .PIN, CRANK 1	1				
5	93310-63239	.COJINETE DE RODILLOS .BEARING	1				
6	44C-11651-00	.BIELA .ROD, CONNECTING	1				
7	90240-07105	PASADOR CON HOYO PIN, CLEVIS	1				
8	90501-07834	RESORTE DE COMPRESION SPRING, COMPRESSION	1				
9	93602-13177	PASADOR DE CLAVIJA PIN, DOWEL	1				
10	93306-378Y2	COJINETE BEARING	2				
11	1S4-11631-10-A0	PISTON (NORMA) PISTON (STD)	1				
12	4XV-11603-00	JUEGO DE ANILLOS (NORMA) PISTON RING SET (STD)	1				
13	4XV-11633-00	PASADOR, PISTON PIN, PISTON	1				
14	90468-12069	PRESILLA CLIP	2				
15	5BP-E1549-00	CATALINA CADENA DE LEVA SPROCKET, CAM CHAIN	1				
16	90105-10430	TORNILLO BOLT, FLANGE	1				
17	90201-102R1	ARANDELA PLANA WASHER, PLATE	1				
18	90280-05048	CUNA WOODRUFF KEY, WOODRUFF	1				
19	1S4-11536-10	ENGRANAJE TRACCION GEAR, DRIVE	1				
20	1S4-E1454-00	PESO 1 WEIGHT 1	1				
21	93306-302X8	COJINETE BEARING	2				
22	12B-E1478-00	COLLAR COLLAR	1				
23	1S4-11531-10	ENGRANAJE CONTRAPESO GEAR, BALANCE WEIGHT	1				
24	12B-E1496-00	COPA TOPE BOSS, BUFFER	1				
25	5XT-11533-00	PLACA DE AMORTIGUADOR PLATE, ABSORBER	1				
26	90501-22721	RESORTE DE COMPRESION SPRING, COMPRESSION	6				
27	93605-10090	PASADOR DE CLAVIJA PIN, DOWEL	3				





5BP1460-1040

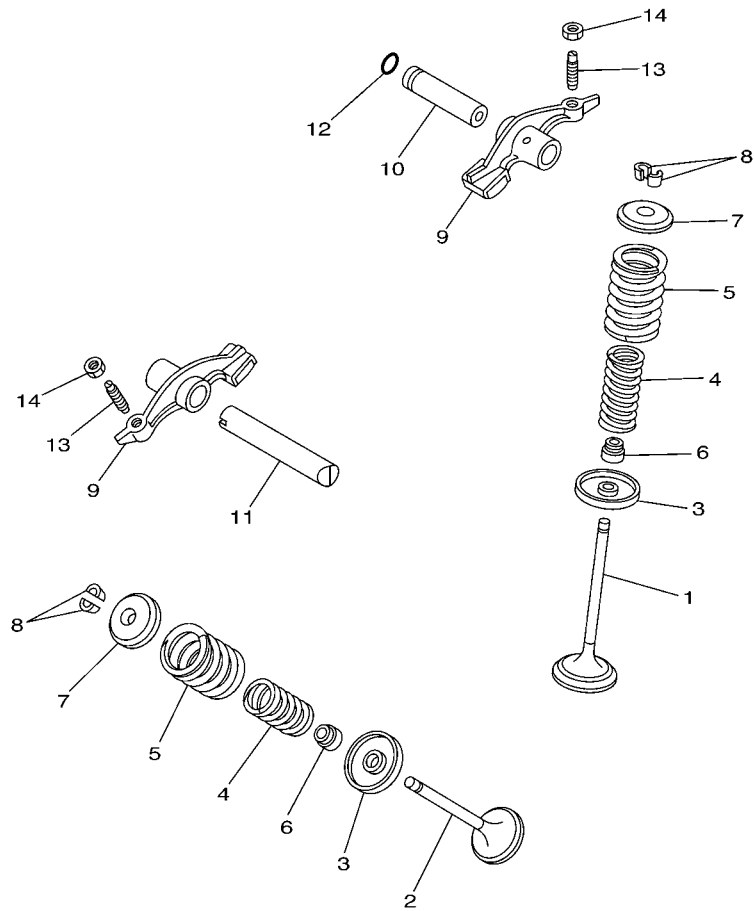
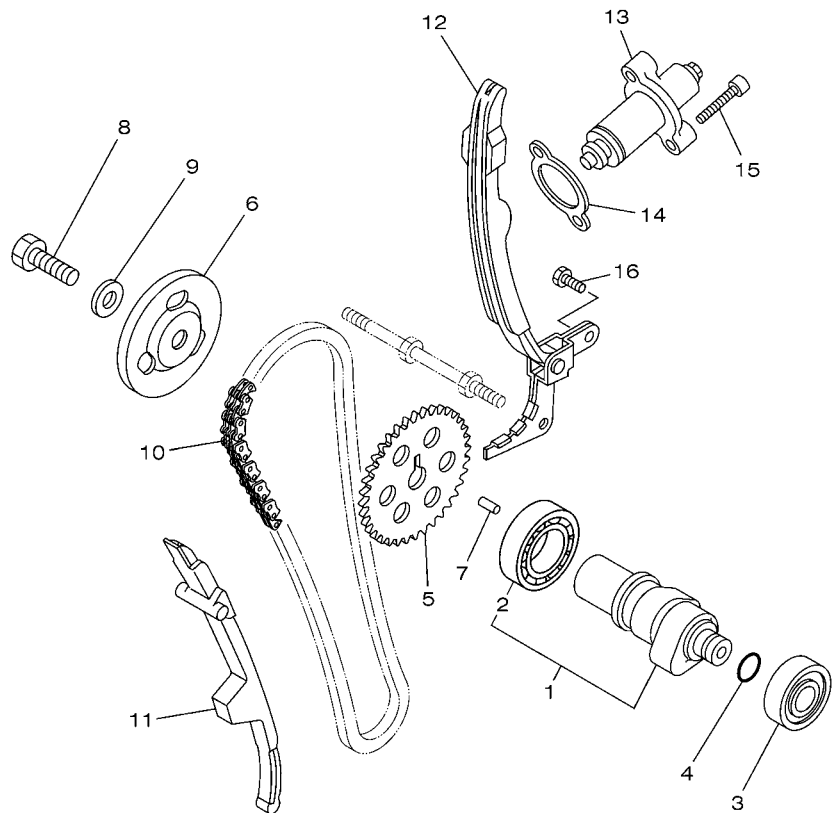


FIG. 4 VALVULA

VALVE

REF. N°	CODIGO N° PART NO.	DESCRIPCION DESCRIPTION	20D3				OBSERVACIONES REMARKS
1	1S4-E2111-00	VALVULA DE ADMISION VALVE, INTAKE	1				
2	1S4-E2121-00	VALVULA DE ESCAPE VALVE, EXHAUST	1				
3	4G0-12116-01	ASIENTO RESORTE DE VALVULA SEAT, VALVE SPRING	2				
4	11H-12113-00	RESORTE VALVULA INTERNA SPRING, VALVE INNER	2				
5	11H-12114-00	RESORTE VALVULA EXTERIOR SPRING, VALVE OUTER	2				
6	5H0-12119-00	SELLO DE ACEITE VALVULA SEAL, VALVE STEM	2				
7	4G0-12117-00	RETEN RESORTE DE VALVULA RETAINER, VALVE SPRING	2				
8	4G0-12118-00	SEGURO DE VALVULA COTTER, VALVE	4				
9	36X-12151-00	BRAZO DE BALANCIN DE VALVULA ARM, VALVE ROCKER	2				
10	1S4-E2156-00	EJE DE BALANCIN SHAFT, ROCKER 2	1				
11	1S4-E2146-00	ARBOL DE BALANCIN SHAFT, ROCKER	1				
12	93210-09350	ANILLO O O-RING	1				
13	5XT-12159-00	TORNILLO DE AJUSTE DE VALVULA SCREW, VALVE ADJUSTING	2				
14	90170-06128	TUERCA NUT	2				

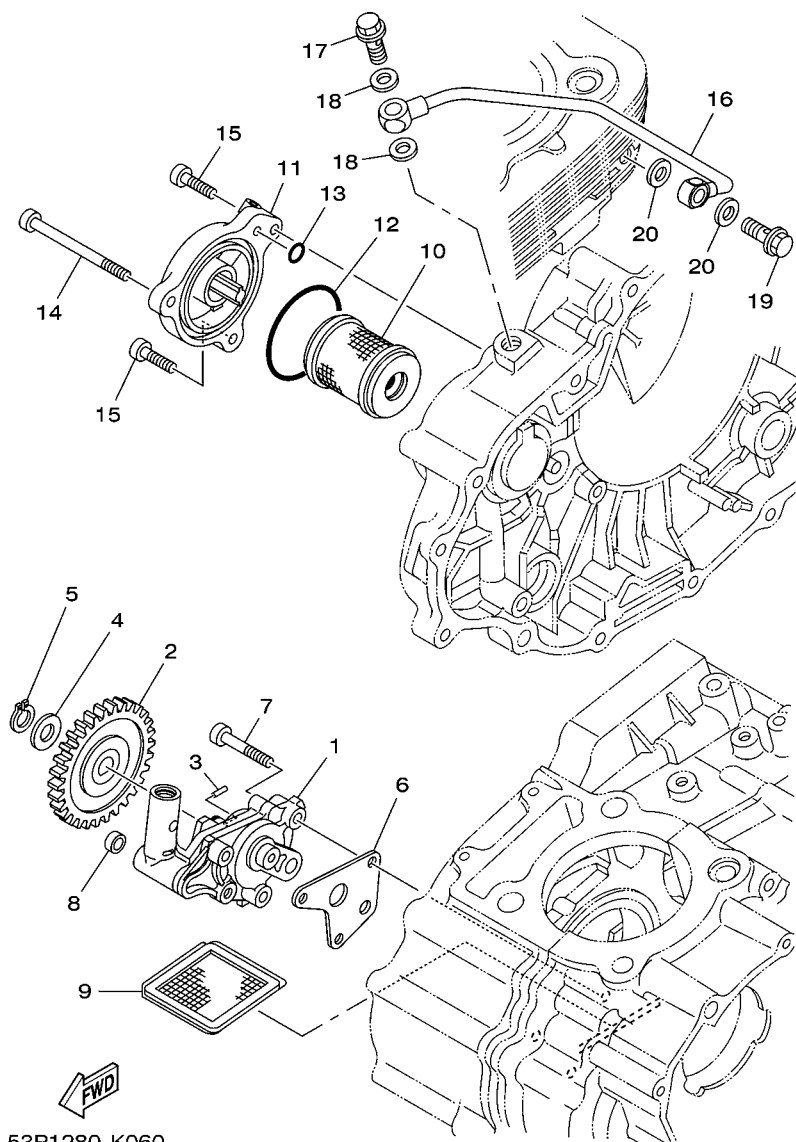
FIG. 5 ARBOL DE LEVAS & CADENA CAMSHAFT & CHAIN



REF. N°	CODIGO N° PART NO.	DESCRIPCION DESCRIPTION	20D3				OBSERVACIONES REMARKS
1	1S4-E2170-10	ARBOL DE LEVAS COMPLETO 1 CAMSHAFT ASSY 1	1				
2	93306-005Y9	.COJINETE .BEARING	1				
3	93306-252Y4	COJINETE BEARING	1				
4	93210-11453	ANILLO O O-RING	1				
5	5BP-E2176-00	CATALINA DE CADENA SPROCKET, CAM CHAIN	1				
6	1S4-E1145-00	PLACA RESPIRADERO 2 PLATE, BREATHER 2	1				
7	93604-10011	PASADOR DE CLAVIJA PIN, DOWEL	1				
8	90101-10852	TORNILLO BOLT	1				
9	90201-108C6	ARANDELA PLANA WASHER, PLATE	1				
10	94582-19104	CADENA (DID SCR-0404 SV 104LE) CHAIN (DID SCR-0404 SV 104LE)	1				DAIDO
11	1S4-E2231-00	TOPE DE GUIA 1 GUIDE, STOPPER 1	1				
12	5XT-12241-01	TOPE DE GUIA 2 GUIDE, STOPPER 2	1				
13	5XT-12210-00	TENSOR CADENA DE LEVA TENSIONER ASSY, CAM CHAIN	1				
14	1S4-E2213-00	EMPAQUE DE CAJA TENSOR GASKET, TENSIONER CASE	1				
15	91314-06025	TORNILLO ALLEN BOLT, HEXAGON SOCKET HEAD	2				
16	9701M-06014	PERNO BOLT	2				



44C6280-L050



53P1280-K060

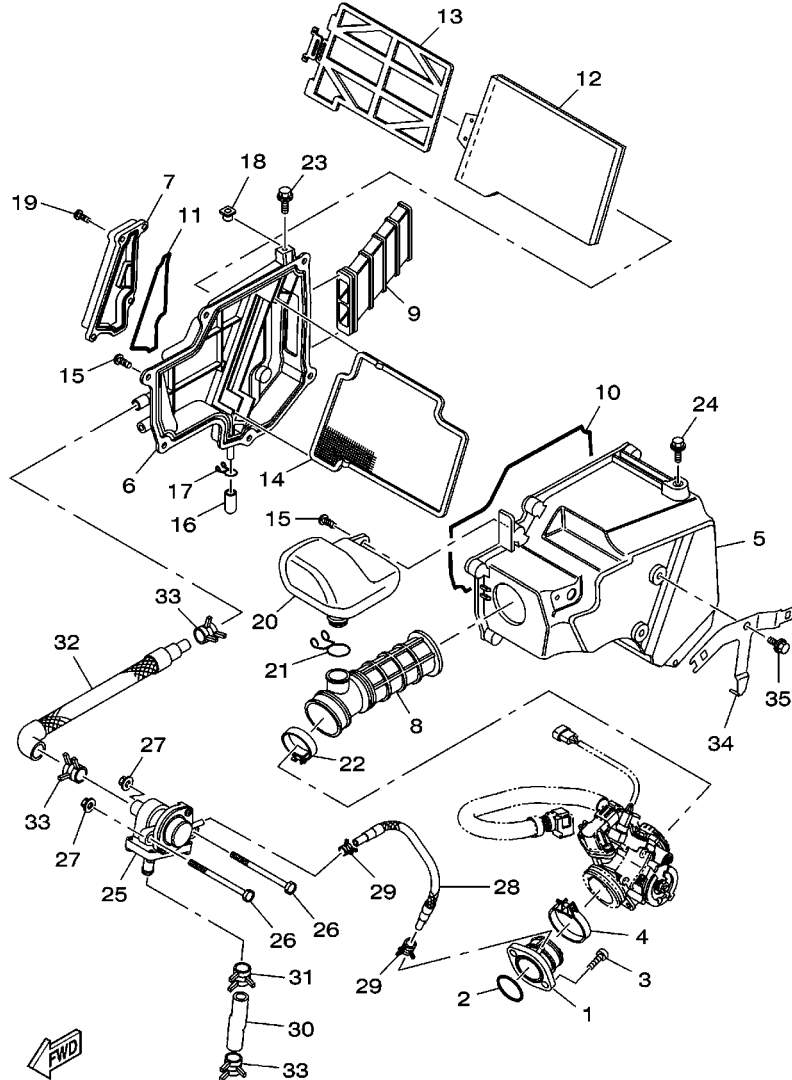
FIG. 6 BOMBA DE ACEITE

OIL PUMP

REF. Nº	CODIGO Nº PART NO.	DESCRIPCION DESCRIPTION	20D3				OBSERVACIONES REMARKS
1	44C-E3300-00	BOMBA DE ACEITE COMPLETA OIL PUMP ASSY	1				
2	12B-E3326-10	ENGRANAJE IMPULSOR DE BOMBA 2 GEAR, PUMP DRIVEN 2	1				
3	93603-12803	PASADOR DE CLAVIJA PIN, DOWEL	1				
4	92902-08200	ARANDELA WASHER	1				
5	99009-08400	PRESILLA REDONDA CIRCLIP	1				
6	1S4-E3329-00	EMPAQUE TAPA DE BOMBA GASKET, PUMP COVER	1				
7	92012-06035	PERNO BOLT, BUTTON HEAD	3				
8	90430-06156	JUNTA GASKET	1				
9	5HH-E3411-01	FILTRO DE ACEITE STRAINER, OIL	1				
10	5D3-13440-02	ELEMENTO FILTRO DE ACEITE ELEMENT ASSY, OIL CLEANER	1				
11	1S4-E3447-00	TAPA DEL ELEMENTO COVER, OIL ELEMENT	1				
12	93210-54175	ANILLO O O-RING	1				
13	93210-07135	ANILLO O O-RING	1				
14	91314-06070	TORNILLO ALLEN BOLT, HEXAGON SOCKET HEAD	1				
15	91314-06020	TORNILLO ALLEN BOLT, HEXAGON SOCKET HEAD	2				
16	5XT-13161-01	TUBO CONDUCTOR 1 PIPE, DELIVERY 1	1				
17	90401-10817	PERNO DE UNION BOLT, UNION	1				
18	90430-10171	JUNTA GASKET	2				
19	90401-08802	PERNO DE UNION BOLT, UNION	1				
20	90430-08119	JUNTA GASKET	2				







2DD1280-N080

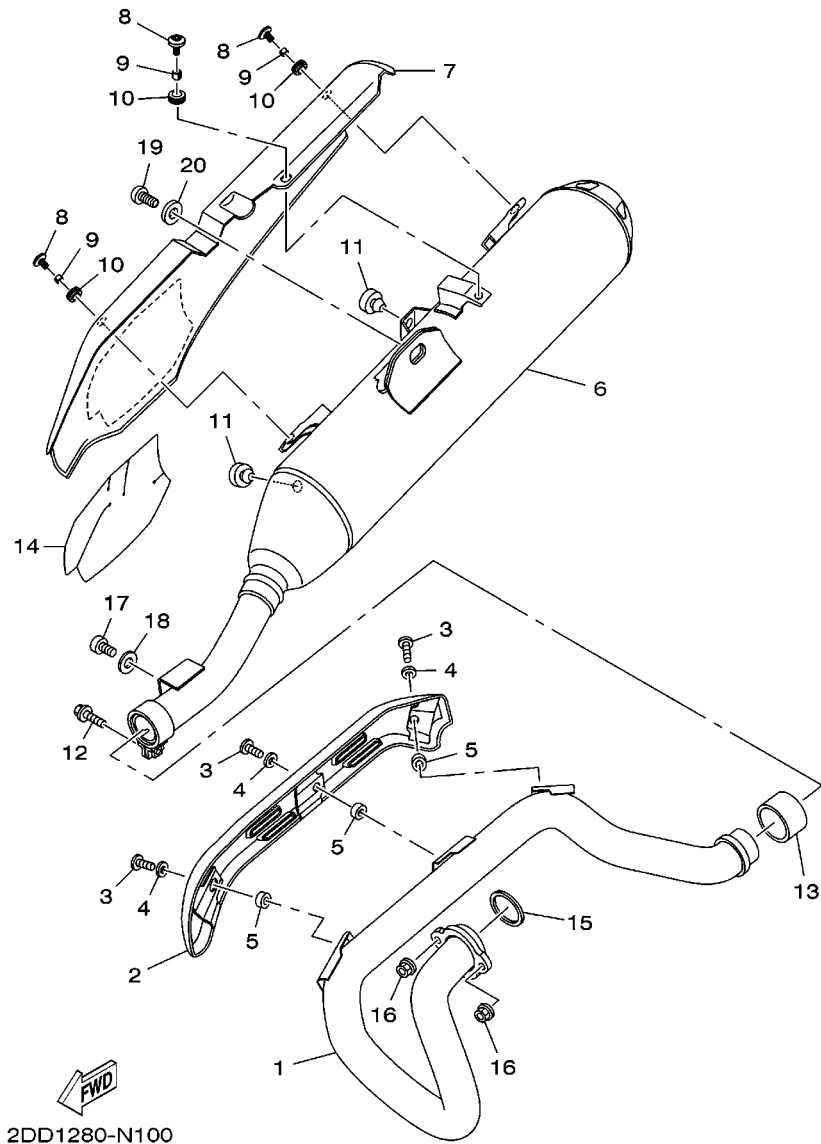
FIG. 8 ADMISION

INTAKE

REF. N°	CODIGO N° PART NO.	DESCRIPCION DESCRIPTION	2DD3				OBSERVACIONES REMARKS
1	1S4-E3585-00	MULTIPLE JOINT , CARBURETOR	1				
2	93210-39700	ANILLO O O-RING	1				
3	91317-06020	PERNO BOLT	2				
4	90450-55003	BRIDA, MANGUERA HOSE CLAMP ASSY	1				
5	5D1-E4411-00	CAJA FILTRO DEL AIRE 1 CASE, AIR CLEANER 1	1				
6	1S4-E4412-01	TAPA CAJA DEL FILTRO 1 CAP, CLEANER CASE 1	1				
7	1S4-E4422-00	TAPA CAJA DE FILTRO 2 CAP, CLEANER CASE 2	1				
8	4B4-E4453-00	UNION DEL FILTRO DEL AIRE 1 JOINT, AIR CLEANER 1	1				
9	1S4-E4437-00	CONDUCTO DUCT	1				
10	1S4-14452-00	SELLO SEAL	1				
11	1S4-E4462-00	SELLO SEAL	1				
12	1S4-14451-00	ELEMENTO DEL FILTRO DEL AIRE ELEMENT, AIR CLEANER	1				
13	1S4-E4458-00	GUIA GUIDE	1				
14	1S4-E4472-00	PLACA DE ELEMENTO PLATE, ELEMENT	1				
15	97707-50020	TORNILLO ROSCA HEMBRA SCREW, TAPPING	7				
16	4B4-E443E-00	TUBO, DRENAJE PIPE, DRAIN	1				
17	90467-11106	PRESILLA CLIP	1				
18	1JK-14477-00	PLACA PLATE	1				
19	9890M-06016	TORNILLO DE LIGAR SCREW, BIND	4				
20	4B4-E3581-00	CAMARA DE AIRE CHAMBER, AIR	1				
21	90467-18196	PRESILLA CLIP	1				
22	90450-46001	BRIDA, MANGUERA HOSE CLAMP ASSY	1				
23	9580M-06014	TORNILLO BOLT, FLANGE	1				
24	9580M-06010	TORNILLO BOLT, FLANGE	1				
25	4B4-E4803-00	VALVULA DE AIRE COMPLETA AIR INDUCTION SYSTEM ASSY	1				
26	97007-06090	PERNO BOLT	2				
27	9570M-06500	TUERCA DE BRIDA NUT, FLANGE	2				





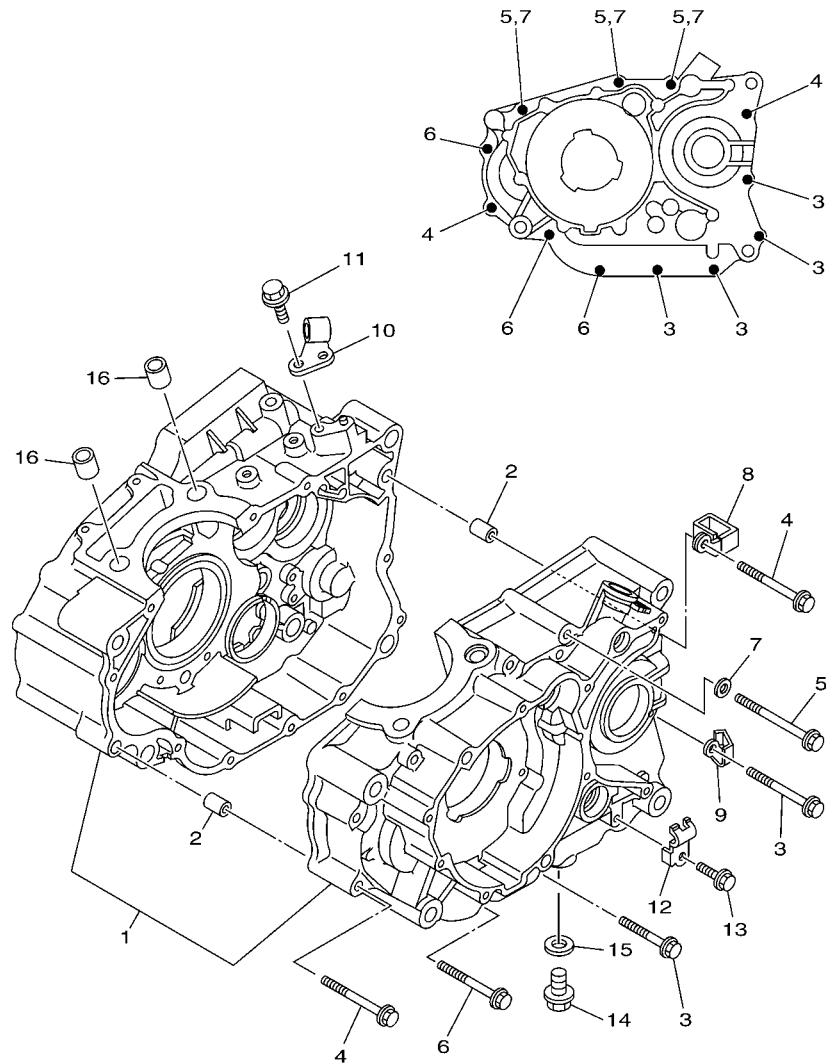


2DD1280-N100

FIG. 10 DESCARGA

EXHAUST

REF. N°	CODIGO N° PART NO.	DESCRIPCION DESCRIPTION	2DD3				OBSERVACIONES REMARKS
1	4B4-E4611-02	TUBO DE ESCAPE 1 PIPE, EXHAUST 1	1				
2	4B4-E4628-11	PROTECTOR DE TUBO DE ESCAPE PROTECTOR, EXHAUST PIPE	1				
3	98980-06012	TORNILLO DE LIGAR SCREW, BIND	3				
4	90201-05017	ARANDELA PLANA WASHER, PLATE	3				
5	90201-05016	ARANDELA PLANA WASHER, PLATE	3				
6	2DD-E4711-00	SILENCIADOR 1 MUFFLER 1	1				
7	53P-E4718-01	PROTECTOR DE SILENCIADOR 1 PROTECTOR, MUFFLER 1	1				
8	90149-06264	TORNILLO DE REGLAJE SCREW	3				
9	90387-06023	ESPACIADOR COLLAR	3				
10	90480-12581	TAPON GROMMET	3				
11	2TY-F4181-00	AMORTIGUADOR DE MONTAJE 1 DAMPER, LOCATING 1	2				
12	9502M-08040	PERNO, DE BRIDA BOLT, FLANGE	1				
13	4EL-14714-00	EMPAQUE DE SILENCIADOR GASKET, MUFFLER	1				
14	53P-E4728-00	PROTECTOR DE SILENCIADOR PROTECTOR, MUFFLER 2	1				
15	44C-E4613-00	JUNTA, TUBO DE ESCAPE GASKET, EXHAUST PIPE	1				
16	95704-08500	TUERCA DE BRIDA NUT, FLANGE	2				
17	91317-08016	PERNO BOLT	1				
18	90201-08326	ARANDELA PLANA WASHER, PLATE	1				
19	92017-10016	PERNO BOLT, BUTTON HEAD	1				
20	90201-101J1	ARANDELA PLANA WASHER, PLATE	1				



**FWD**  
53P1280-K110

**FIG. 11 CARTER**

**CRANKCASE**

REF. Nº	CODIGO Nº PART NO.	DESCRIPCION DESCRIPTION	20D3				OBSERVACIONES REMARKS
1	1S4-E5150-21	CARTER COMPLETO CRANKCASE ASSY	1				
2	99530-10114	PASADOR, DE ESPIGA PIN, DOWEL	2				
3	95024-06045	PERNO, BRIDA BOLT, FLG. (SMALL HEAD)	4				
4	95024-06060	PERNO, BRIDA BOLT, FLG. (SMALL HEAD)	2				
5	95024-06070	PERNO, BRIDA BOLT, FLG. (SMALL HEAD)	3				
6	95024-06055	PERNO, BRIDA BOLT, FLG. (SMALL HEAD)	3				
7	90430-06014	JUNTA GASKET	3				
8	90461-08001	GRAPA CLAMP	1				
9	90462-08225	BRIDA CLAMP	1				
10	1S4-E5441-00	SOSTEN DE CABLE DE EMBRAGUE HOLDER, CLUTCH CABLE	1				
11	95812-06016	TORNILLO DE REBORDE BOLT, FLANGE	1				
12	90462-10215	BRIDA CLAMP	1				
13	95027-06010	PERNO, DE BRIDA BOLT, FLANGE	1				
14	90340-12806	TORNILLO, DE DRENAJE PLUG, STRAIGHT SCREW	1				
15	90430-12213	JUNTA GASKET	1				
16	99530-14016	PASADOR, DE ESPIGA PIN, DOWEL	2				

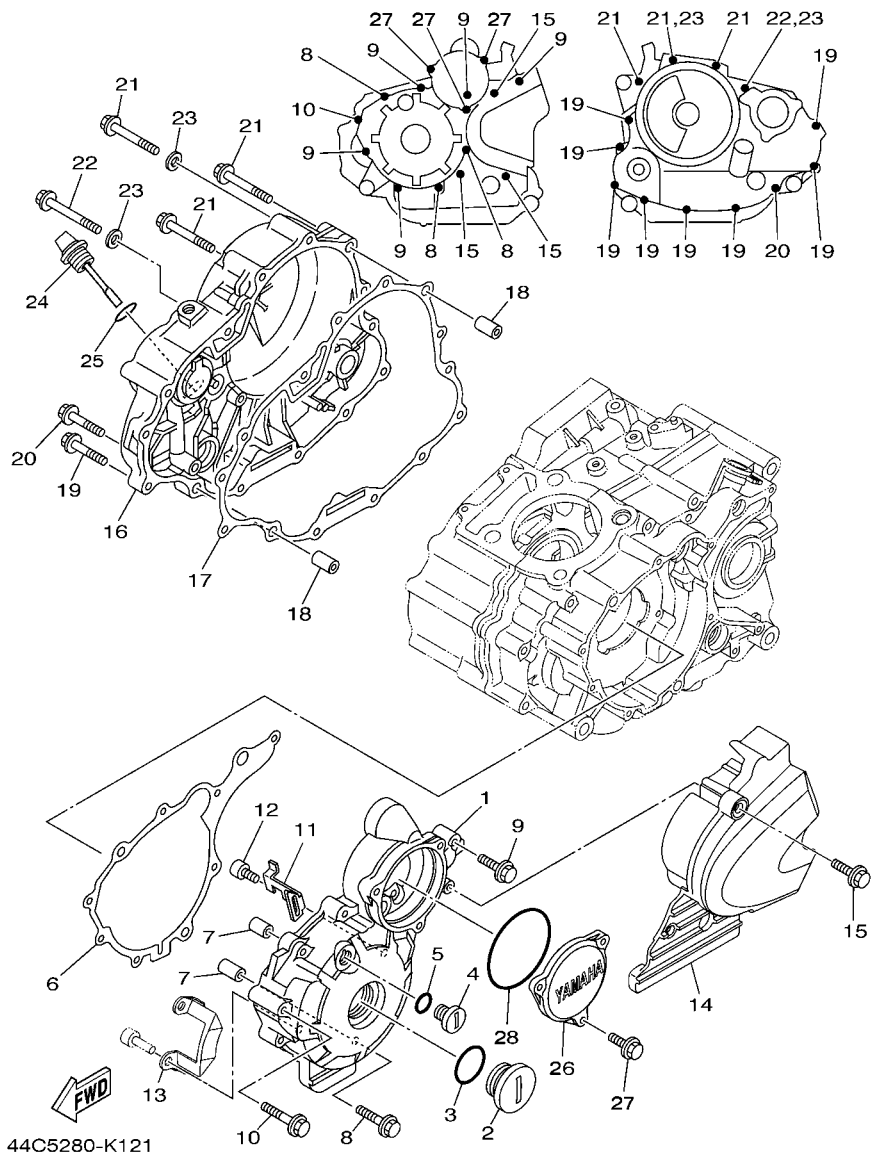


FIG. 12 CUBIERTA DE CARTER 1

CRANKCASE COVER 1

REF. Nº	CODIGO Nº PART NO.	DESCRIPCION DESCRIPTION	20D3				OBSERVACIONES REMARKS
1	53P-E5411-00	CUBIERTA DE CARTER 1 COVER, CRANKCASE 1	1				
2	90340-32W03	TORNILLO, DE DRENAJE PLUG, STRAIGHT SCREW	1				
3	93210-32172	ANILLO O O-RING	1				
4	90340-14W02	TORNILLO, DE DRENAJE PLUG, STRAIGHT SCREW	1				
5	93210-14369	ANILLO O O-RING	1				
6	1S4-E5451-00	EMPAQ DE CUBIERTA DE CARTER GASKET, CRANKCASE COVER 1	1				
7	99530-10114	PASADOR, DE ESPIGA PIN, DOWEL	2				
8	95024-06040	PERNO, BRIDA BOLT, FLG.(SMALL HEAD)	3				
9	95024-06030	PERNO, BRIDA BOLT, FLG.(SMALL HEAD)	5				
10	95024-06050	PERNO, BRIDA BOLT, FLG.(SMALL HEAD)	1				
11	90465-20801	BRIDA CLAMP	1				
12	9131M-05012	PERNO BOLT	1				
13	44C-E5113-00	PLACA PLATE	1				
14	4B4-E5418-00-35	CUBIERTA CAJA DE CADENA COVER, CHAIN CASE	1				SL SL
15	95024-06016	PERNO, BRIDA BOLT, FLG.(SMALL HEAD)	3				
16	44C-E5421-00	TAPA DE CARTER DERECHA COVER, CRANKCASE 2	1				
17	1S4-E5461-00	JUNTA TAPA CARTER DERECHO 2 GASKET, CRANKCASE COVER 2	1				
18	99530-10114	PASADOR, DE ESPIGA PIN, DOWEL	2				
19	95024-06025	PERNO, BRIDA BOLT, FLG.(SMALL HEAD)	8				
20	95024-06035	PERNO, BRIDA BOLT, FLG.(SMALL HEAD)	1				
21	95024-06050	PERNO, BRIDA BOLT, FLG.(SMALL HEAD)	3				
22	95024-06055	PERNO, BRIDA BOLT, FLG.(SMALL HEAD)	1				
23	90430-06014	JUNTA GASKET	2				
24	5HH-E5362-00	TAPON DEL NIVEL DE ACEITE PLUG, OIL LEVEL	1				
25	93210-19123	ANILLO O O-RING	1				
26	1S4-E5415-00	CUBIERTA DE GENERADOR COVER, GENERATOR	1				
27	95024-06016	PERNO, BRIDA BOLT, FLG.(SMALL HEAD)	3				







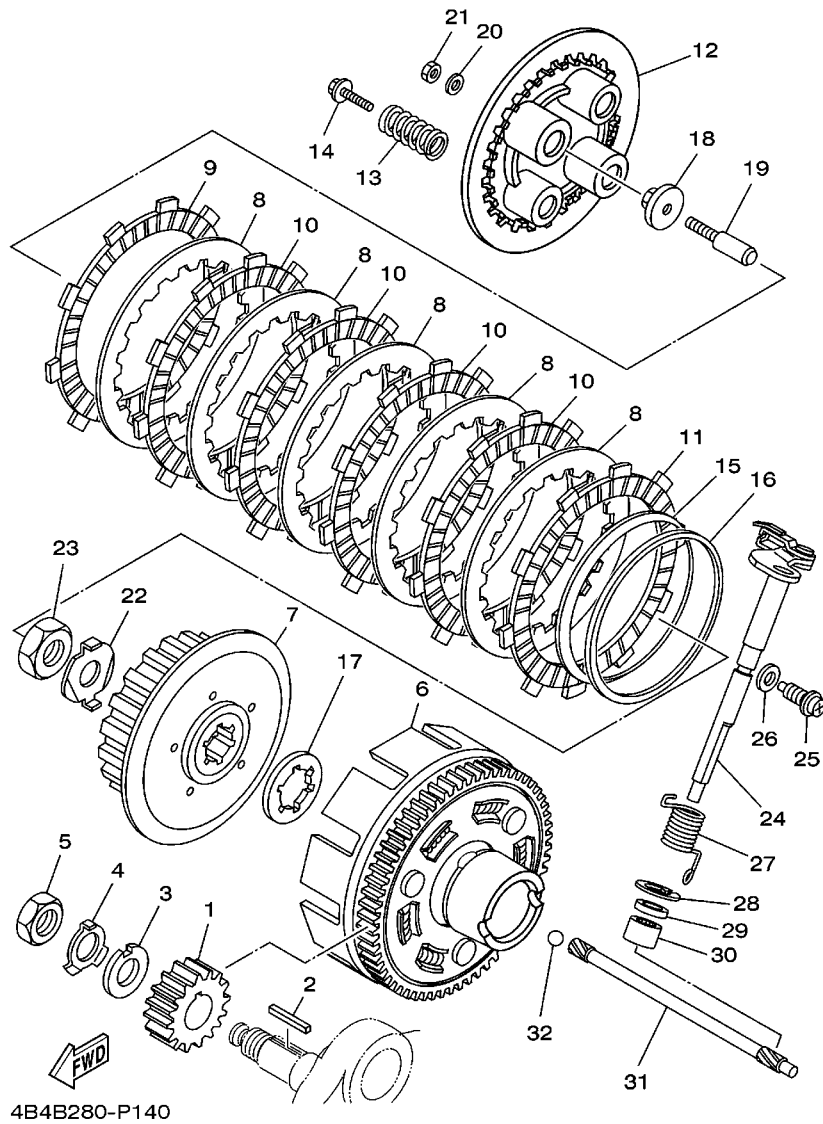


FIG. 14 EMBRAGUE

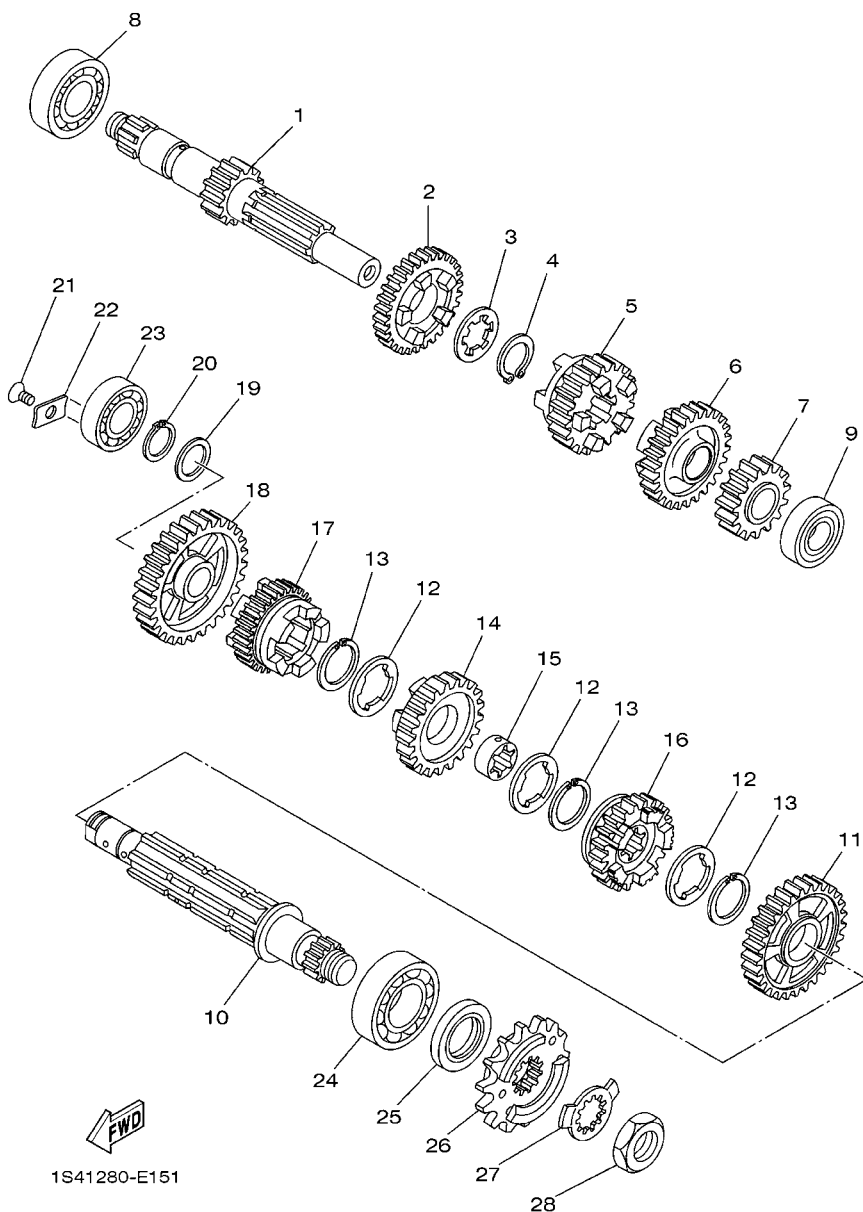
CLUTCH

REF. Nº	CODIGO Nº PART NO.	DESCRIPCION DESCRIPTION	20D3				OBSERVACIONES REMARKS
1	5XT-16111-00	ENGRANAJE TRACC.PRIMARIA (24D) GEAR, PRIMARY DRIVE (24T)	1				
2	90282-05077	CHAVETA, RECTA KEY, STRAIGHT	1				
3	90214-16063	ARANDELA DE POSICION WASHER, CLAW	1				
4	90215-16293	ARANDELA DE CIERRE WASHER, LOCK	1				
5	90170-16800	TUERCA NUT	1				
6	1S4-E6150-00	CAMPANA DE EMBRAGUE PRIMARY DRIVEN GEAR COMP.	1				
7	1S4-E6371-00	CUBO, DE EMBRAGUE BOSS, CLUTCH	1				
8	1S4-E6324-00	PLACA DE EMBRAGUE PLATE, CLUTCH 1	5				
9	1S4-E6321-00	PLACA DE FRICCION PLATE, FRICTION	1				
10	1S4-E6331-00	DISCO, DE FRICCION 2 PLATE, FRICTION 2	4				
11	1S4-E6307-00	PLACA DE FRICCION 3 PLATE, FRICTION 3	1				
12	1S4-E6351-00	PLATO DE PRESION PLATE, PRESSURE 1	1				
13	1S4-E6333-00	RESORTE DE EMBRAGUE 1 SPRING, CLUTCH 1	4				
14	1S4-E6337-00	TORNILLO DE RESORTE SCREW, SPRING	4				
15	1S4-E6383-00	RESORTE .COJIN SPRING, CUSHION	1				
16	1S4-E6384-00	PLACA DE ASIENTO PLATE, SEAT	1				
17	1S4-E6154-00	ARANDELA, DE EMPUJE 1 PLATE, THRUST 1	1				
18	1S4-E6358-00	PLACA DE EMPUJE PLATE, PUSH	1				
19	1S4-E6356-00	VARILLA DE EMPUJE 1 ROD, PUSH 1	1				
20	1S4-E6628-00	ARANDELA WASHER	1				
21	1S4-E6377-00	TUERCA DE CIERRE NUT, LOCK	1				
22	90215-16800	ARANDELA DE CIERRE WASHER, LOCK	1				
23	90170-16801	TUERCA NUT	1				
24	4B4-E6380-00	LEVA DE EMPUJE COMPLETA PUSH LEVER ASSY	1				
25	90109-08072	PERNO BOLT	1				
26	90430-08119	JUNTA GASKET	1				
27	90508-203B3	RESORTE DE TORSION SPRING, TORSION	1				



FIG. 15 TRANSMISION

TRANSMISSION



1S41280-E151

REF. Nº	CODIGO Nº PART NO.	DESCRIPCION DESCRIPTION	20D3				OBSERVACIONES REMARKS
1	1S4-E7411-00	EJE PRIMARIO (14D) AXLE, MAIN (14T)	1				
2	4B4-E7141-00	ENGRENAJE PINION DE 4TA (25D) GEAR, 4TH PINION (25T)	1				
3	90209-18208	ARANDELA DE SEPARACION WASHER	1				
4	93410-22039	SEGURO CIRCLIP	1				
5	4B4-E7131-00	ENGRENAJE PINION DE 3RA (22D) GEAR, 3RD PINION (22T)	1				
6	1S4-17151-00	ENGRANAJE PINON DE 5TA (27D) GEAR, 5TH PINION (27T)	1				
7	4B4-E7121-00	ENGRENAJE PINION DE 2DA (19D) GEAR, 2ND PINION (19T)	1				
8	93306-272Y4	COJINETE BEARING	1				
9	93306-003YU	COJINETE BEARING	1				
10	1S4-E7402-00	EJE DE TRACCION COMPLETO DRIVE AXLE ASSY	1				
11	4B4-E7221-00	ENGRENAJE RUEDA DE 2DA (32D) GEAR, 2ND WHEEL (32T)	1				
12	90209-22191	ARANDELA DE SEPARACION WASHER	3				
13	93440-25084	SEGURO CIRCLIP	3				
14	4B4-E7231-00	ENGRENAJE RUEDA DE 3RA (28D) GEAR, 3RD WHEEL (28T)	1				
15	90387-22027	ESPACIADOR COLLAR	1				
16	1S4-17251-00	ENGRANAJE RUEDA DE 5TA (23D) GEAR, 5TH WHEEL (23T)	1				
17	4B4-E7241-00	ENGRENAJE DE RUEDA 4TA (26D) GEAR, 4TH WHEEL (26T)	1				
18	4B4-E7211-00	ENGRENAJE RUEDA DE 1RA (36D) GEAR, 1ST WHEEL (36T)	1				
19	90201-177G4	ARANDELA PLANA WASHER, PLATE	1				
20	93410-17037	SEGURO CIRCLIP	1				
21	9870M-06012	TORNILLO DE CABEZA PLANA SCREW, FLAT HEAD	1				
22	1S4-E7558-00	PLACA PLATE, BEARING	1				
23	93306-203XD	COJINETE BEARING	1				
24	93306-205XD	COJINETE BEARING	1				
25	93102-25226	SELLO ACEITE OIL SEAL	1				
26	4B4-17460-00	PINON (13D) SPROCKET, DRIVE (13T)	1				
27	90215-23265	ARANDELA DE CIERRE WASHER, LOCK	1				

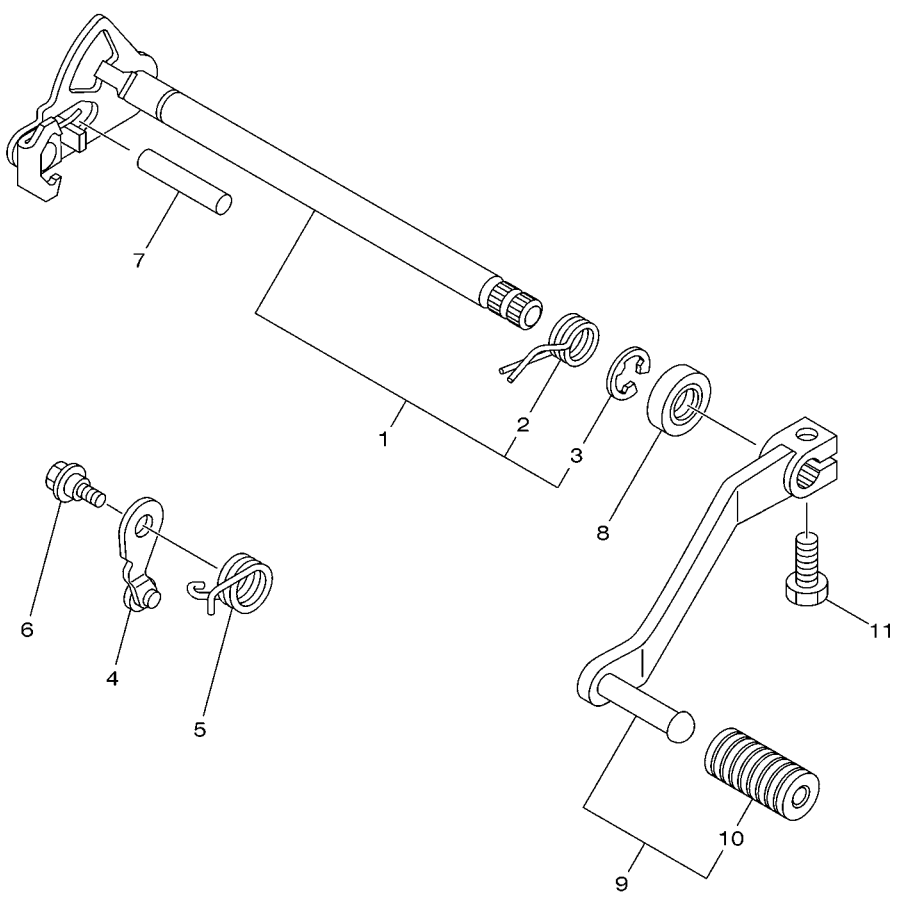




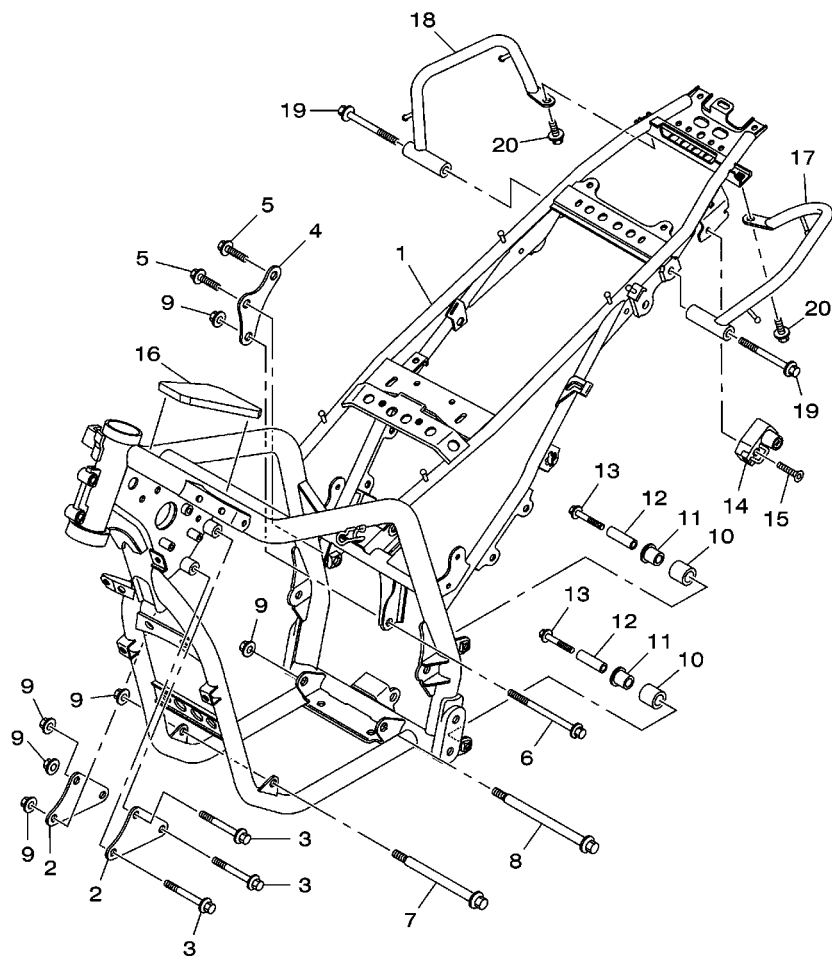
FIG. 17 EJE DE CAMBIO & PEDAL

SHIFT SHAFT

REF. N°	CODIGO N° PART NO.	DESCRIPCION DESCRIPTION	20D3				OBSERVACIONES REMARKS
1	1S4-18101-01	EJE SELECTOR COMPLETO SHIFT SHAFT ASSY	1				
2	90508-32139	.RESORTE DE TORSION .SPRING, TORSION	1				
3	99001-12600	.PRESILLA REDONDA .CIRCLIP	1				
4	1S4-E8140-00	PALANCA DE TOPE COMPLETA STOPPER LEVER ASSY	1				
5	90508-26020	RESORTE DE TORSION SPRING, TORSION	1				
6	90109-06190	PÉRNO BOLT	1				
7	93608-43228	PASADOR DE CLAVIJA PIN, DOWEL	1				
8	93102-14209	SELLO ACEITE OIL SEAL	1				
9	53P-E8110-00	PEDAL DE CAMBIO COMPLETO SHIFT PEDAL ASSY	1				
10	5HH-E8113-00	.FUNDA DEL PEDAL DEL CAMBIO .COVER, SHIFT PEDAL	1				
11	97017-06020	PÉRNO BOLT	1				



53P1280-K170



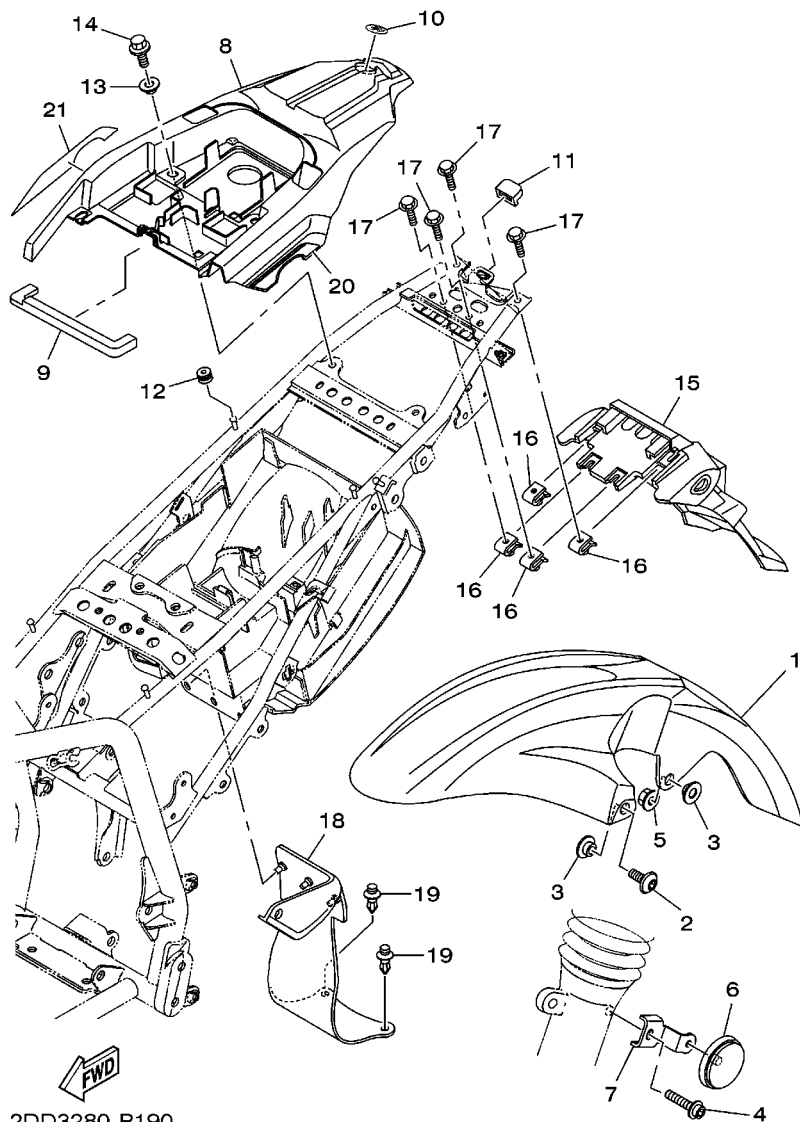
FWD  
2DD1280-N180

FIG. 18 CUADRO

FRAME

REF. N°	CODIGO N° PART NO.	DESCRIPCION DESCRIPTION	2DD3				OBSERVACIONES REMARKS
1	53P-F1110-20	ARMAZON COMPLETO FRAME COMP.	1				
2	4B4-F1315-00	SOPORTE DE MOTOR 1 STAY, ENGINE 1	2				
3	95817-10080	TORNILLO BOLT, FLANGE	3				
4	4B4-F1317-00	SOPORTE DE MOTOR 3 STAY, ENGINE 3	1				
5	95817-10016	TORNILLO BOLT, FLANGE	2				
6	90105-10110	TORNILLO BOLT, FLANGE	1				
7	90105-10118	TORNILLO BOLT, FLANGE	1				
8	95817-10150	TORNILLO BOLT, FLANGE	1				
9	90179-10658	TUERCA NUT	6				
10	30X-22178-00	TENSOR TENSIONER	2				
11	5RM-F2184-00	BUJE BUSH	2				
12	90387-08024	ESPACIADOR COLLAR	2				
13	95827-08040	TORNILLO BOLT, FLANGE	2				
14	4R8-21308-01	PORTACASCO COMPLETO HELMET HANGER ASSY	1				
15	90149-06154	TORNILLO DE REGLAJE SCREW	1				
16	4B4-F139U-00	AMORTIGUADOR 2 DAMPER 2	1				
17	53P-F474A-00	FIADOR DE EMPUNADURA ASSIST, GRIP	1				
18	53P-F474W-00	FIADOR DE EMPUNADURA 2 ASSIST,GRIP 2	1				
19	95827-08065	TORNILLO BOLT, FLANGE	2				
20	95827-08014	TORNILLO BOLT, FLANGE	2				



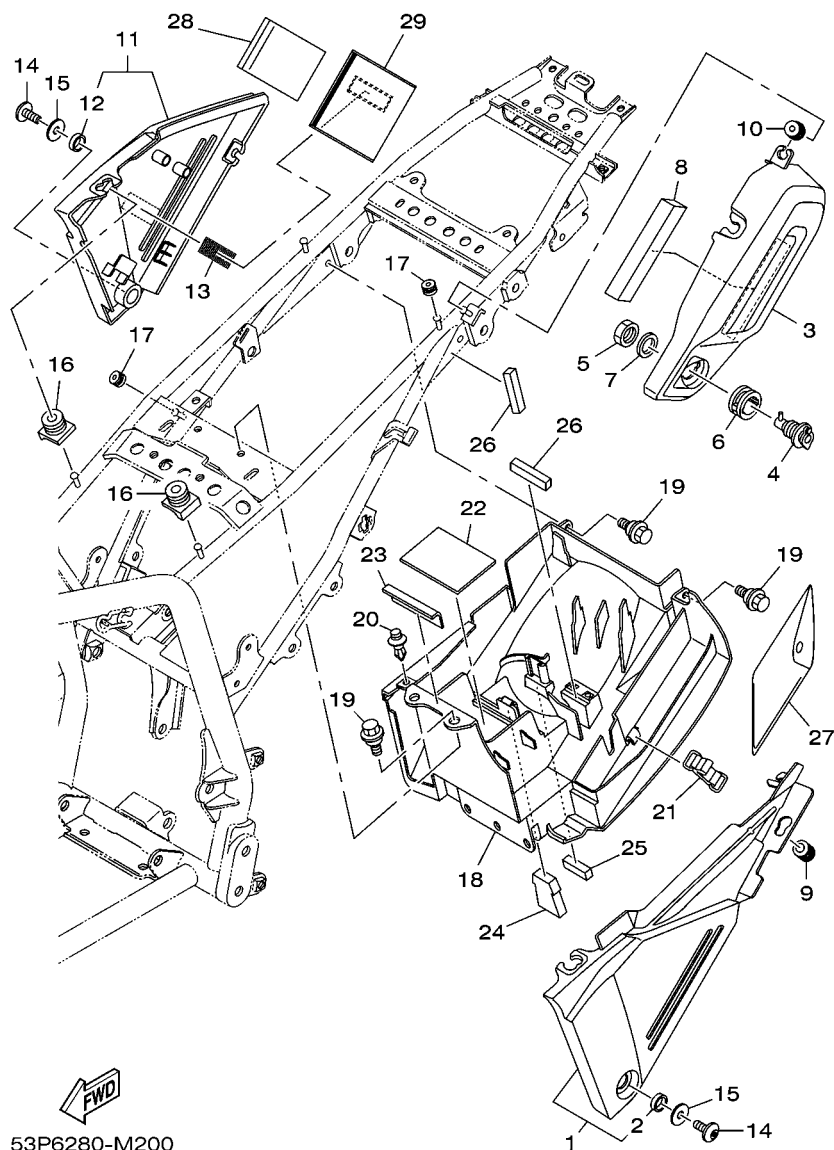


2DD3280-P190

FIG. 19 GUARDABARRO

FENDER

REF. Nº	CODIGO Nº PART NO.	DESCRIPCION DESCRIPTION	2DD3			OBSERVACIONES REMARKS
1	53P-F1511-00	GUARDABARRO DELANTERO FENDER, FRONT	1			
2	90111-06038	TORNILLO BOLT, HEX. SOCKET BUTTON	2			
3	90387-06681	ESPACIADOR COLLAR	4			
4	90110-06861	TORNILLO ALLEN BOLT, HEXAGON SOCKET HEAD	2			
5	95704-06500	TUERCA DE BRIDA NUT, FLANGE	2			
6	2EK-85111-00	REFLECTOR DELANTERA 1 REFLECTOR, FRONT 1	2			
7	2DD-F317E-00	SOPORTE 1 STAY 1	2			
8	53P-F1611-00	GUARDABARRO TRASERO FENDER, REAR	1			
9	53P-F1639-00	AMORTIGUADOR 2 DAMPER 2	1			
10	4KN-2836B-10	MARCA TUNING FORK MARK	1			
11	5RM-F1719-00	ANILLO PROTÉCTOR GROMMET	1			
12	90480-10334	TAPON GROMMET	1			
13	90387-06200	ESPACIADOR COLLAR	2			
14	95807-06012	TORNILLO BOLT, FLANGE	2			
15	5RM-F1685-10	SOPORTE DE LICENCIA BRACKET, LICENSE	1			
16	90183-06023	TUERCA DE RESORTE NUT, SPRING	4			
17	9580M-06014	TORNILLO BOLT, FLANGE	4			
18	4B4-F1642-00	GUARDA DE CHARNELA GUARD, FLAP	1			
19	90269-08001	REMACHE RIVET	2			
20	53P-F1661-10	CALCOMANIA CUBTA, GUARDB. TRAS. GRAPHIC, R. FENDER COVER (L.H)	1			UR PARA DPBMC
21	53P-F1662-10	CALCOMANIA CUBTA, GUARDB. TRAS. GRAPHIC, R. FENDER COVER (R.H)	1			UR PARA DPBMC



53P6280-M200

FIG. 20 CUBIERTA LATERAL

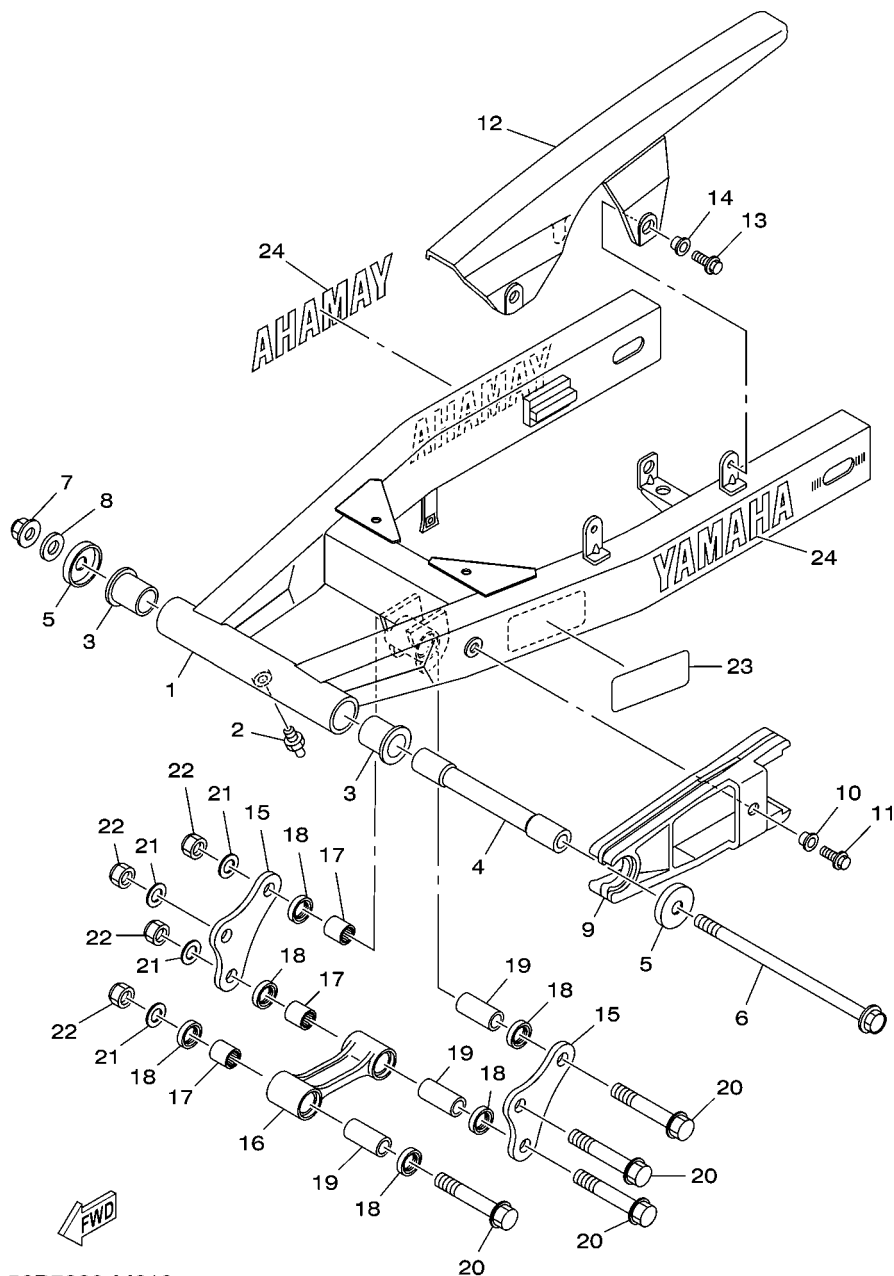
SIDE COVER

REF. Nº	CODIGO Nº PART NO.	DESCRIPCION DESCRIPTION	20D3				OBSERVACIONES REMARKS
1	53P-F1711-00	CUBIERTA LATERAL 1 COVER, SIDE 1	1				
2	90387-1001B	.ESPACIADOR .COLLAR	1				
3	53P-F8173-00	CAJA BOX, TOOL	1				
4	3TL-21708-00	CUBIERTA 2 LOCK ASSY 2	1				
5	90170-22187	TUERCA NUT	1				
6	90480-24186	TAPON GROMMET	1				
7	90201-225A4	ARANDELA PLANA (T=1.0) WASHER, PLATE (T=1.0)	1				
8	90520-17800	EQUILIBRIO, CUBIERTA DAMPER, PLATE	1				
9	53P-F1773-00	ANILLO PROTECTOR GROMMET	1				
10	90480-12320	TAPON GROMMET	1				
11	53P-F1721-00	CUBIERTA LATERAL 2 COVER, SIDE 2	1				
12	90387-1001B	.ESPACIADOR .COLLAR	1				
13	4K5-2814E-10	GANCHO HOOK	1				
14	90111-06038	TORNILLO BOLT, HEX. SOCKET BUTTON	2				
15	90201-064H0	ARANDELA PLANA WASHER, PLATE	2				
16	4B4-F1719-00	ANILLO PROTECTOR GROMMET	2				
17	90480-10334	TAPON GROMMET	2				
18	4B4-F177G-00	CAJA DE BATERIA BOX, BATTERY	1				
19	90109-06202	PERNO BOLT	4				
20	90269-08066	REMACHE RIVET	1				
21	4B4-H2131-00	TIRANTE DE BATERIA BAND, BATTERY	1				
22	1C6-F174X-00	AMORTIGUADOR DAMPER	1				
23	1S4-H2123-00	ASIENTO DE BATERIA SEAT, BATTERY	1				
24	4B4-F174X-00	AMORTIGUADOR DAMPER	1				
25	4B4-F174Y-00	AMORTIGUADOR DAMPER	1				
26	4B4-F1746-00	AMORTIGUADOR DAMPER	2				
27	53P-28100-10	JUEGO DE HERRAMIENTAS TOOL KIT	1				



FIG. 21 BRAZO TRASERO

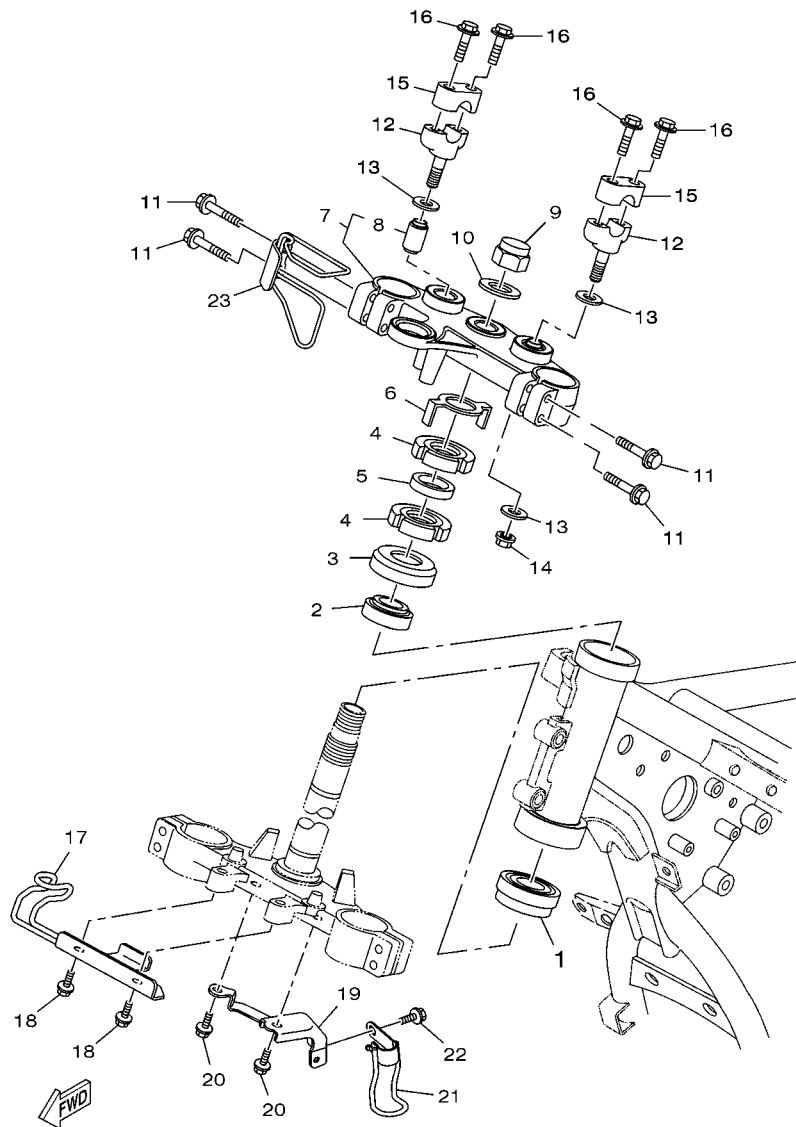
REAR ARM



56D7280-M210

REF. Nº	CODIGO Nº PART NO.	DESCRIPCION DESCRIPTION	20D3			OBSERVACIONES REMARKS
1	53P-F2110-00	BRAZO TRASERO COMPLETO REAR ARM COMP.	1			
2	93700-06803	BOQUILLA DE ENGRASAR NIPPLE, GREASE	1			
3	90386-18099	BUJE BUSH	2			
4	5XT-22184-00	BUJE BUSH	1			
5	5L9-F2128-00	TAPA DE EMPIJE 1 COVER, THRUST 1	2			
6	5JV-22141-00	EJE DEL BARRULANTE SHAFT, PIVOT	1			
7	90185-12007	TUERCA AUTOBLOCANTE NUT, SELF-LOCKING	1			
8	90201-12W69	ARANDELA PLANA WASHER, PLATE	1			
9	4B4-F2151-00	SELLO DE GUARDA SEAL, GUARD	1			
10	90387-06W41	ESPACIADOR COLLAR	1			
11	95807-06020	TORNILLO BOLT, FLANGE	1			
12	5RM-F2311-00	CABRECADENA CASE, CHAIN	1			
13	95807-06012	TORNILLO BOLT, FLANGE	2			
14	90387-06W62	ESPACIADOR COLLAR	2			
15	4B4-F217A-00	BRAZO REEURIO ARM, RELAY	2			
16	53P-F217F-00	BIELA COMPLETA 1 ROD, CONNECTING 1	1			
17	93315-31759	COJINETE DE RODILLOS BEARING	3			
18	93106-17801	SELLO ACEITE OIL SEAL	6			
19	90387-12056	ESPACIADOR COLLAR	3			
20	90105-12030	TORNILLO BOLT, FLANGE	4			
21	90201-12688	ARANDELA PLANA WASHER, PLATE	4			
22	95617-12100	TUERCA NUT, U	4			
23	2DD-F1668-00	ETIQUETA DE FRANJA LABEL, TIRE	1			
24	99244-00160	EMBLEMA, YAMAHA EMBLEM, YAMAHA	2			





53P1280-K230

FIG. 23 DIRECCION

STEERING

REF. Nº	CODIGO Nº PART NO.	DESCRIPCION DESCRIPTION	2DD3			OBSERVACIONES REMARKS
1	93332-000Y5	COJINETE BEARING	1			
2	93399-99931	COJINETE BEARING	1			
3	1S4-F3416-00	CUBIERTA DE BASE DE BOLA 2 COVER, BALL RACE 2	1			
4	90179-25W22	TUERCA NUT	2			
5	90202-26142	ARANDELA DE PLANA WASHER, PLATE	1			
6	5HH-F3418-00	ARANDELA ESPECIAL WASHER, SPECIAL	1			
7	4B4-F3430-01-35	PLATINA SUPERIOR HANDLE CROWN COMP.	1			SL
8	1UF-23434-00	SOPORTE DE AMORTIGUADOR HOLDER, DAMPER	2			SL
9	90176-22081	TUERCA CORONA NUT, CROWN	1			
10	90201-22018	ARANDELA PLANA WASHER, PLATE	1			
11	95027-08040	PERNO, DE BRIDA BOLT, FLANGE	4			
12	3Y6-23442-00-35	SOPORTE DE MANUBRIO INFERIOR HOLDER, HANDLE LOWER	2			SL
13	90201-10141	ARANDELA PLANA WASHER, PLATE	4			
14	95607-10200	TUERCA DE AUTO-CIERRE NUT, U FLANGE	2			
15	3V9-F3441-10-35	SOPORTE DE MANUBRIO HOLDER, HANDLE UPPER	2			SL
16	95024-08035	PERNO, BRIDA BOLT, FLG. (SMALL HEAD)	4			
17	53P-F5875-00	SOPORTE DE MANGUERA FRENO 1 HOLDER, BRAKE HOSE 1	1			
18	95817-06010	TORNILLO BOLT, FLANGE	2			
19	53P-F5876-00	SOPORTE DE MANGUERA FRENO 2 HOLDER, BRAKE HOSE 2	1			
20	95817-06010	TORNILLO BOLT, FLANGE	2			
21	53P-F587A-00	SOPORTE DE MANGUERA FRENO HOLDER, BRAKE HOSE	1			
22	95027-06010	PERNO, DE BRIDA BOLT, FLANGE	1			
23	53P-F317E-00	SOPORTE 1 STAY 1	1			

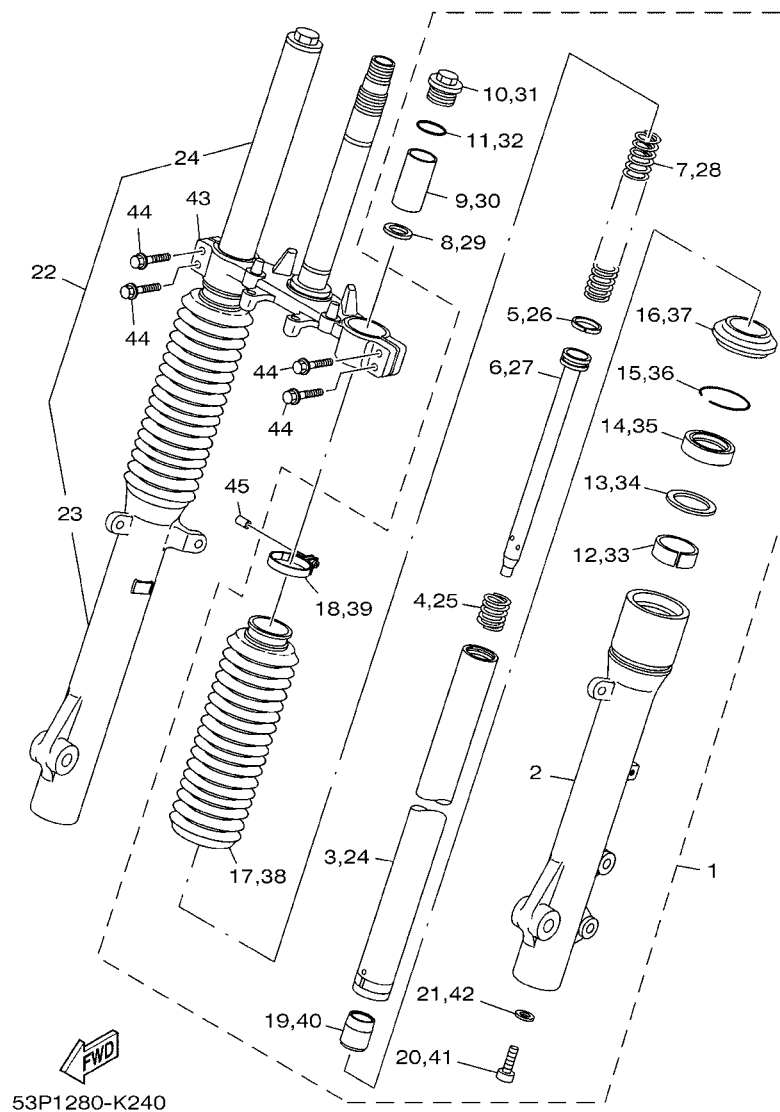
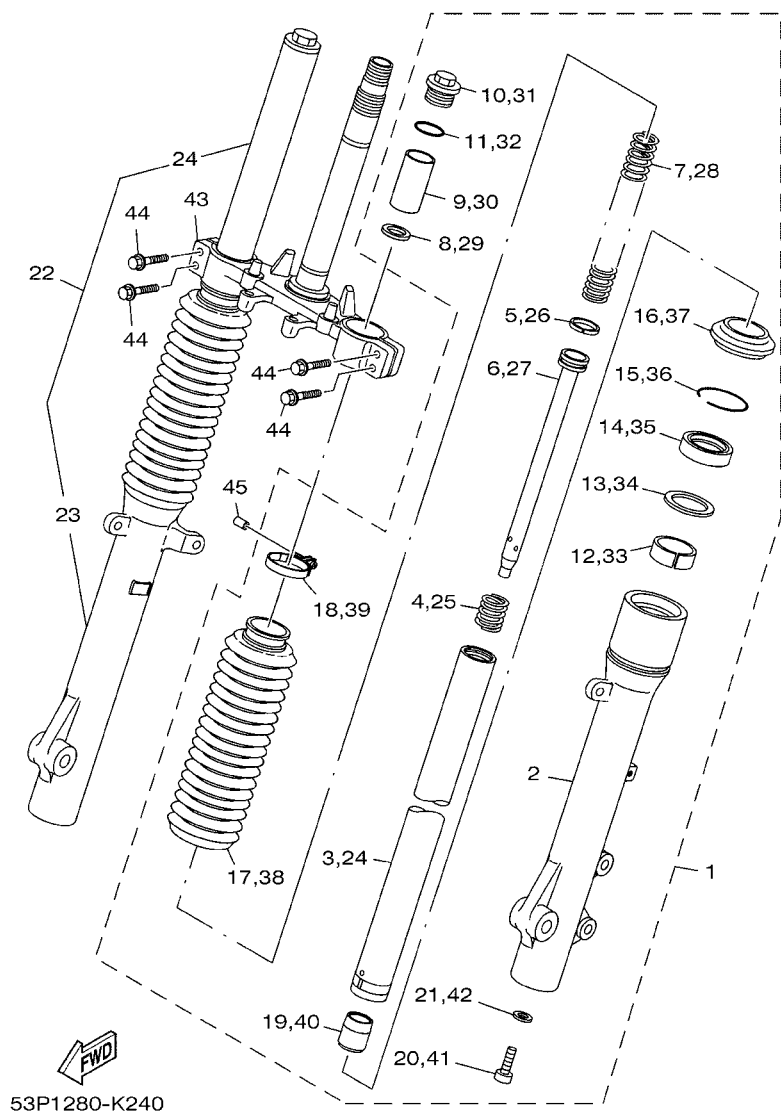


FIG. 24 HORQUILLA DELANTERA FRONT FORK

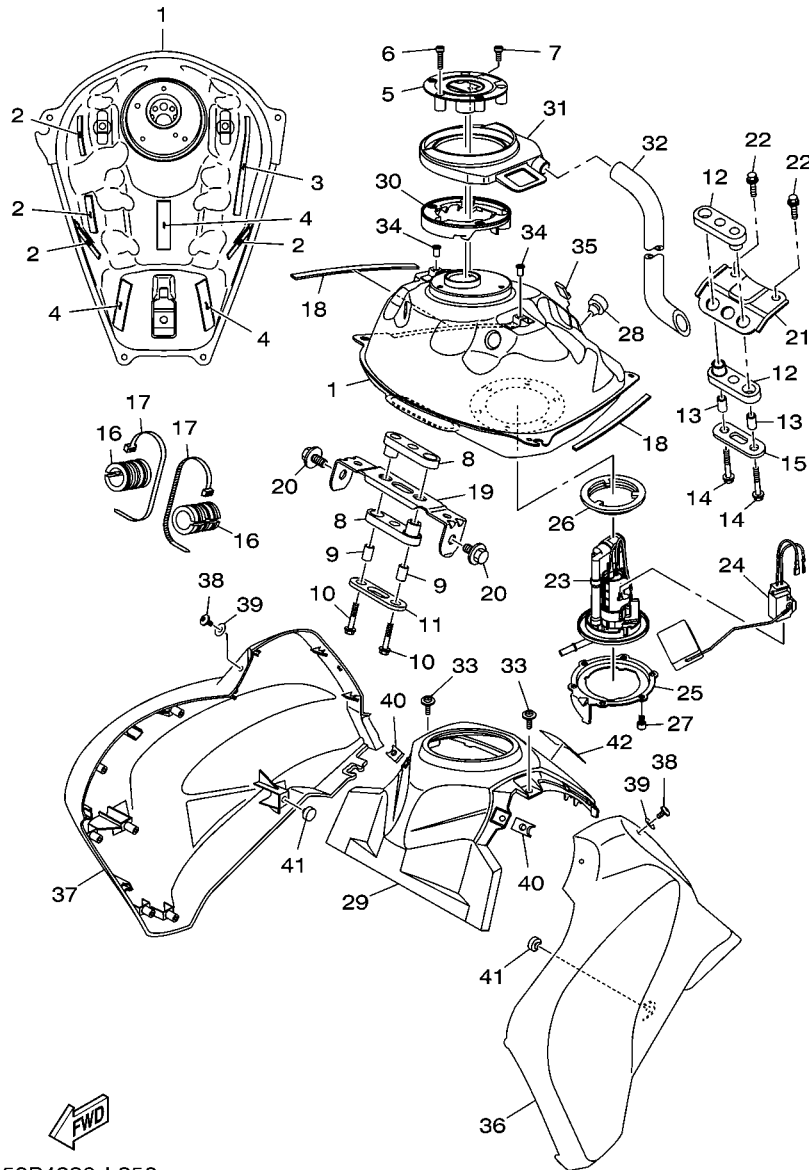
REF. Nº	CODIGO Nº PART NO.	DESCRIPCION DESCRIPTION	20D3				OBSERVACIONES REMARKS
1	53P-23102-10	HORQUILLA DELANTERA COMPL.(MI) FRONT FORK ASSY (L.H)	1				
2	53P-23126-10	.TUBO EXTERIOR (IZQUIERDO) .TUBE, OUTER (L.H)	1				
3	53P-23110-10	.TUBO INTERIOR COMPLETO 1 .INNER TUBE COMP.1	1				
4	53P-23151-00	.RESORTE DE REBOTE .SPRING, REBOUND	1				
5	53P-23157-00	.ANILLO DEL PISTON .RING, PISTON	1				
6	53P-23171-01	.PISTON HORQUILLA DELANT. .PISTON, FRONT FORK	1				
7	53P-23141-10	.RESORTE HORQUILLA DELANT. .SPRING, FRONT FORK	1				
8	5VU-23142-00	.ASIENTO DEL MUELLE SUPERIOR .SEAT, SPRING UPPER	1				
9	53P-23118-10	.SEPARADOR .SPACER	1				
10	27D-2311H-00	.PERNO .FORK BOLT	1				
11	93210-35N02	.ANILLO O .O-RING	1				
12	3VD-23125-10	.METAL CORREDIZO 1 .METAL, SLIDE 1	1				
13	3VD-23115-00	.GUIA DE CUBIERTA SUPERIOR .GUIDE, COVER UPPER	1				
14	5VU-23145-00	.RETEN DE ACEITE .OIL SEAL	1				
15	3VD-23156-00	.ANILLO DE ENGANCHE .RING, SNAP	1				
16	3VD-23144-00	.GUARDAPOLVO .SEAL, DUST	1				
17	53P-23191-01	.FUNDA .BOOT	1				
18	90450-41001	.BRIDA, MANGUERA .HOSE CLAMP ASSY	1				
19	27D-23173-00	.VASTAGO AHUSADO .SPINDLE, TAPER	1				
20	90110-10N52	.TORNILLO ALLEN .BOLT, HEXAGON SOCKET HEAD	1				
21	90430-10171	.JUNTA .GASKET	1				
22	53P-23103-10	HORQUILLA DELANTERA COMPL.(MD) FRONT FORK ASSY (R.H)	1				
23	53P-23136-10	.TUBO EXTERIOR 2 .TUBE, OUTER	1				
24	53P-23110-10	.TUBO INTERIOR COMPLETO 1 .INNER TUBE COMP.1	1				
25	53P-23151-00	.RESORTE DE REBOTE .SPRING, REBOUND	1				
26	53P-23157-00	.ANILLO DEL PISTON .RING, PISTON	1				
27	53P-23171-01	.PISTON HORQUILLA DELANT. .PISTON, FRONT FORK	1				

FIG. 24 HORQUILLA DELANTERA FRONT FORK



REF. Nº	CODIGO Nº PART NO.	DESCRIPCION DESCRIPTION	20D3				OBSERVACIONES REMARKS
28	53P-23141-10	.RESORTE HORQUILLA DELANT. .SPRING, FRONT FORK	1				
29	5VU-23142-00	.ASIENTO DEL MUELLE SUPERIOR .SEAT, SPRING UPPER	1				
30	53P-23118-10	.SEPARADOR .SPACER	1				
31	27D-2311H-00	.PERNO .FORK BOLT	1				
32	93210-35N02	.ANILLO O .O-RING	1				
33	3VD-23125-10	.METAL CORREDIZO 1 .METAL, SLIDE 1	1				
34	3VD-23115-00	.GUIA DE CUBIERTA SUPERIOR .GUIDE, COVER UPPER	1				
35	5VU-23145-00	.RETEN DE ACEITE .OIL SEAL	1				
36	3VD-23156-00	.ANILLO DE ENGANCHE .RING, SNAP	1				
37	3VD-23144-00	.GUARDAPOLVO .SEAL, DUST	1				
38	53P-23191-01	.FUNDA .BOOT	1				
39	90450-41001	.BRIDA, MANGUERA .HOSE CLAMP ASSY	1				
40	27D-23173-00	.VASTAGO AHUSADO .SPINDLE, TAPER	1				
41	90110-10N52	.TORNILLO ALLEN .BOLT, HEXAGON SOCKET HEAD	1				
42	90430-10171	.JUNTA .GASKET	1				
43	4B4-F3340-00	.PLATINA INFERIOR COMPLETA UNDER BRACKET COMP.	1				
44	95027-08035	.PERNO, DE BRIDA BOLT, FLANGE	4				
45	90445-05807	.TUBO HOSE	1				

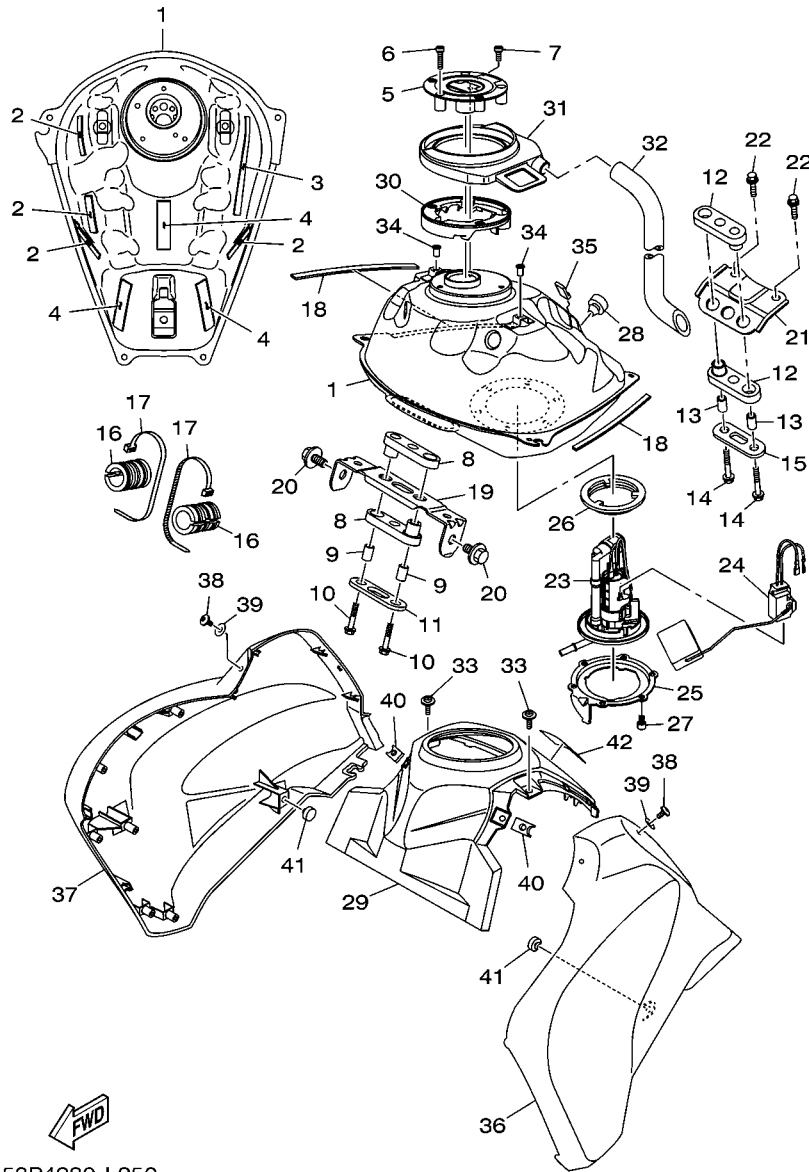




53P4280-L250

FIG. 25 DEPOSITO DE COMBUSTIBLE FUEL TANK

REF. Nº	CODIGO Nº PART NO.	DESCRIPCION DESCRIPTION	20D3				OBSERVACIONES REMARKS
1	53P-F4110-00	DEPOSITO DE COMBUSTIBLE COMP. FUEL TANK COMP.	1				
2	90520-02831	EQUILIBRIO, CUBIERTA DAMPER, PLATE	4				
3	90520-02833	EQUILIBRIO, CUBIERTA DAMPER, PLATE	1				
4	90520-02832	EQUILIBRIO, CUBIERTA DAMPER, PLATE	3				
5	53P-24602-10	TAPON COMPLETO CAP ASSY	1				
6	90110-05112	TORNILLO ALLEN BOLT, HEXAGON SOCKET HEAD	3				
7	91312-05010	TORNILLO BOLT	1				
8	4B4-F4181-00	AMORTIGUADOR DE MONTAJE 1 DAMPER, LOCATING 1	2				
9	90387-06028	ESPACIADOR COLLAR	2				
10	9580M-06030	TORNILLO BOLT, FLANGE	2				
11	4B4-F4186-00	ARANDELA ESPECIAL WASHER, SPECIAL	1				
12	4B4-F4182-00	AMORTIGUADOR DE MONTAJE 2 DAMPER, LOCATING 2	2				
13	90387-06028	ESPACIADOR COLLAR	2				
14	9580M-06030	TORNILLO BOLT, FLANGE	2				
15	4B4-F4187-00	ARANDELA ESPECIAL WASHER, SPECIAL	1				
16	4B4-F4183-00	AMORTIGUADOR DE MONTAJE 3 DAMPER, LOCATING 3	2				
17	90465-13152	BRIDA CLAMP	2				
18	5RS-24188-00	MOLDURA DEPOSITO COMBUST. MOLD, FUEL TANK	2				
19	53P-24191-00	SOPORTE DEPOSITO DE COMBUST.1 BRACKET, FUEL TANK 1	1				
20	90119-08212	TORNILLO CON ARANDELA BOLT, WITH WASHER	2				
21	53P-24192-00	SOPORTE DE DEPOSITO COMBUST.2 BRACKET, FUEL TANK 2	1				
22	95827-08012	TORNILLO BOLT, FLANGE	2				
23	53P-E3910-10	BOMBA DE COMBUSTIBLE COMPLETA FUEL PUMP ASSY	1				
24	4B4-H5752-00	UNIDAD TRANSM. MED. COMBUST. SENDER UNIT ASSY, FUEL METER	1				
25	53P-F4491-00	SOPORTE BOMBA COMBUSTIBLE BRACKET, FUEL PUMP	1				
26	1S4-24486-00	ANILLO O O-RING	1				
27	91312-05010	TORNILLO BOLT	6				



53P4280-L250

FIG. 25 DEPOSITO DE COMBUSTIBLE FUEL TANK

REF. Nº	CODIGO Nº PART NO.	DESCRIPCION DESCRIPTION	2DD3				OBSERVACIONES REMARKS
28	1S4-F4741-00	COJIN DE ASIENTO PAD, SEAT	1				
29	53P-F171A-00-P2	CUBIERTA, TECHO COVER, TOP	1				MBL2 MBL2
30	53P-F414F-00	TAPA DE RELLENO DE COMP. COVER, FILLER COMP.	1				
31	53P-F41B1-00	TAPA DE TANQUE COVER, TANK	1				
32	53P-F4318-00	TUBO DE REBOSAMIENTO PIPE, OVERFLOW	1				
33	90159-05065	TORNILLO CON VALONA SCREW, WITH WASHER	2				
34	90179-05523	TUERCA NUT	2				
35	1S4-F411J-00	AMORTIGUADOR, DE CUBIERTA LAT DAMPER, SIDE COVER	1				
36	53P-F4129-00-P4	CUBIERTA LATERAL 1 COVER, SIDE 1	1				DPBMC DPBMC
	53P-F4129-00-P5	CUBIERTA LATERAL 1 COVER, SIDE 1	1				MNM3 MNM3
	53P-F4129-00-P6	CUBIERTA LATERAL 1 COVER, SIDE 1	1				VRC1 VRC1
	53P-F4129-00-P7	CUBIERTA LATERAL 1 COVER, SIDE 1	1				BWM1 BWM1
37	53P-F4139-00-P4	CUBIERTA LATERAL 2 COVER, SIDE 2	1				DPBMC DPBMC
	53P-F4139-00-P5	CUBIERTA LATERAL 2 COVER, SIDE 2	1				MNM3 MNM3
	53P-F4139-00-P6	CUBIERTA LATERAL 2 COVER, SIDE 2	1				VRC1 VRC1
	53P-F4139-00-P7	CUBIERTA LATERAL 2 COVER, SIDE 2	1				BWM1 BWM1
38	90111-05003	TORNILLO BOLT, HEX. SOCKET BUTTON	6				
39	90202-05180	ARANDELA DE PLANA WASHER, PLATE	6				
40	90183-05076	TUERCA DE RESORTE NUT, SPRING	6				
41	1S4-F4741-00	COJIN DE ASIENTO PAD, SEAT	2				
42	5RR-F118K-11	ETIQUETA DE PRECAUCION LABEL, CAUTION	1				



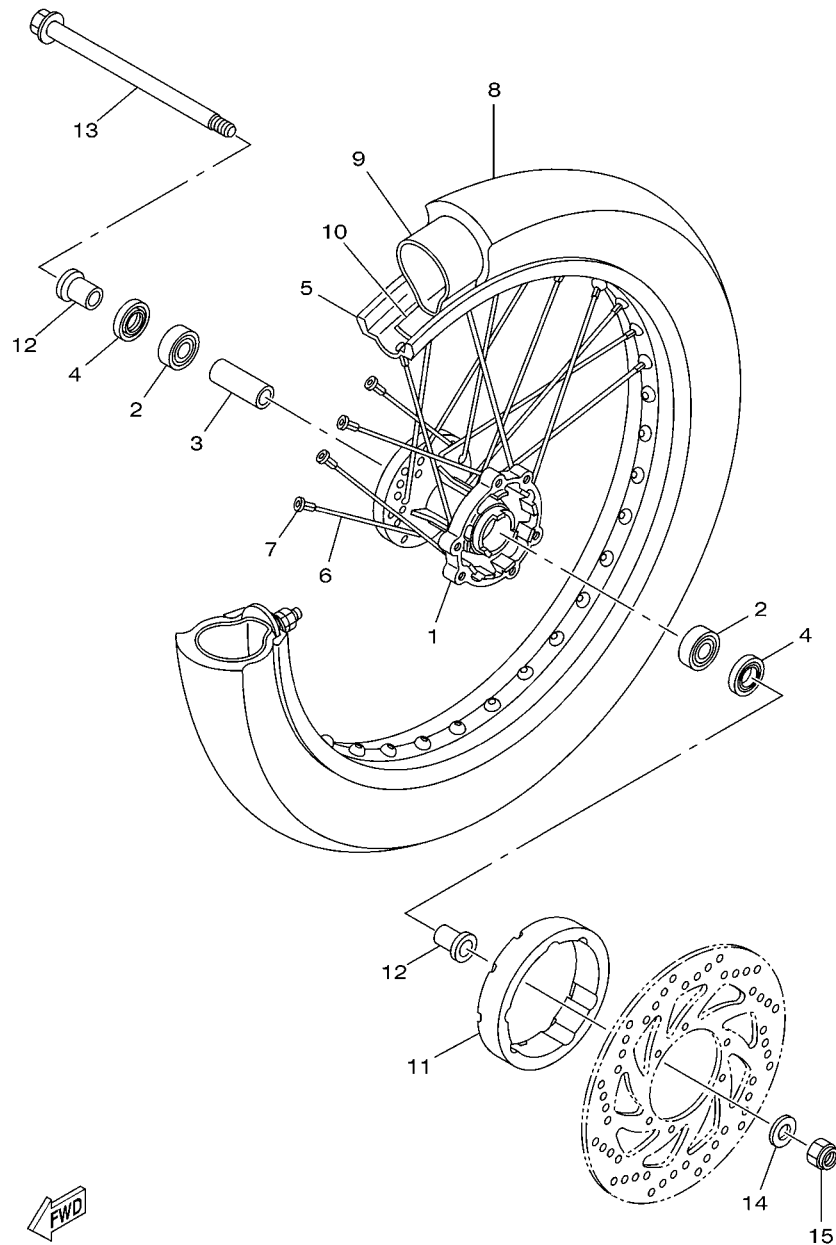


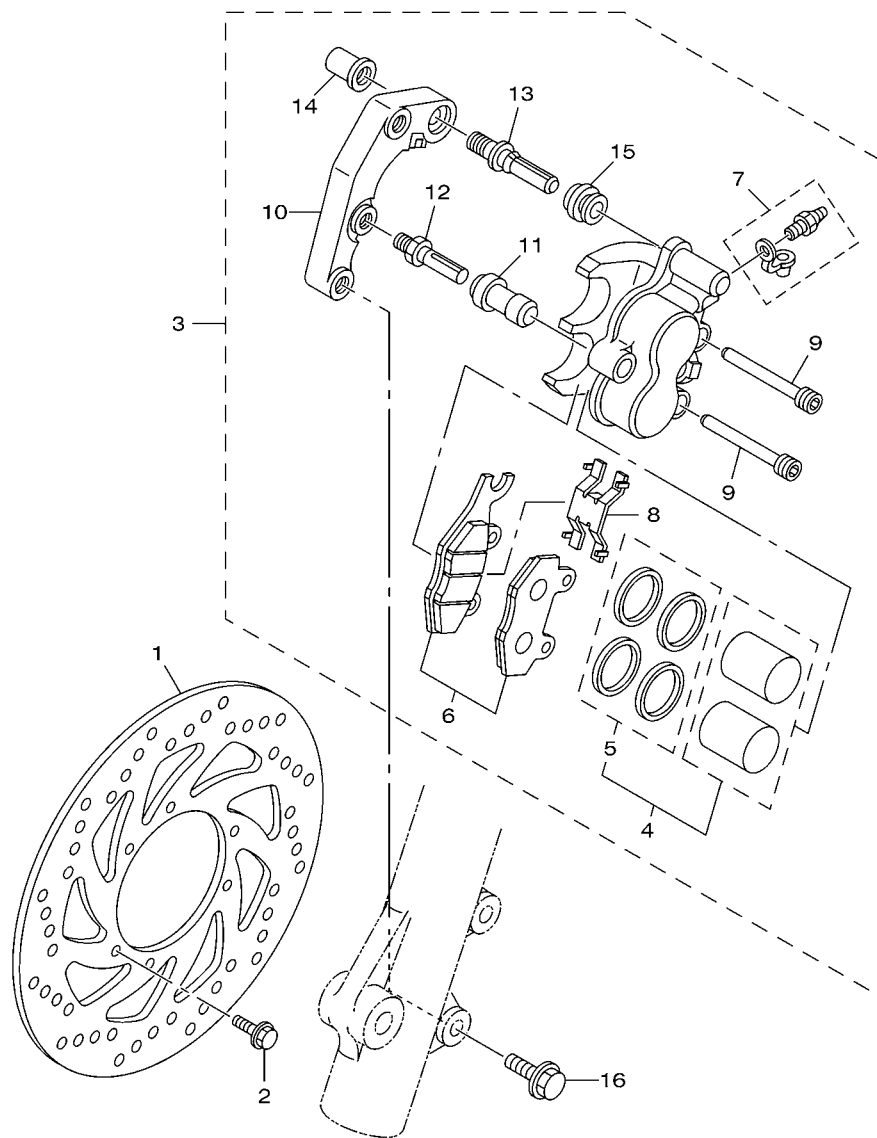
FIG. 27 RUEDA DELANTERA

FRONT WHEEL

REF. Nº	CODIGO Nº PART NO.	DESCRIPCION DESCRIPTION	20D3			OBSERVACIONES REMARKS
1	4AN-F5111-10-35	MASA DELANTERA HUB, FRONT	1			SL PARA DPBMC,...
2	93306-252Y5	COJINETE BEARING	2			SL PARA DPBMC,...
3	90560-15290	SEPARADOR SPACER	1			
4	93106-20021	SELLO ACEITE OIL SEAL	2			
5	94416-21800	ARO (1.60-21) RIM (1.60-21)	1			
6	5RM-F5196-00	RAYOS INTERNO 1 SPOKE, INNER 1	36			
7	5HH-F5195-01	NIPLE NIPPLE, SPOKE	36			
8	94108-21804	NEUMATICO (80/90-21 M/C 48S) TIRE (80/90-21 M/C 48S)	1			
9	94227-21W51	TUBE (80/100-21) TUBE (80/100-21)	1			PIRELLI PIRELLI
10	94325-21117	BANDA DE ARO (1.85-21) BAND,RIM (1.85-21)	1			PIRELLI PIRELLI
11	4B4-F514A-00	AROS, MASA 1 RING, WHEEL 1	1			
12	90387-15W36	ESPACIADOR COLLAR	2			
13	1S4-F5181-00	EJE DE LA RUEDA AXLE, WHEEL	1			
14	90201-15813	ARANDELA PLANA WASHER, PLATE	1			
15	90185-14112	TUERCA AUTOBLOCANTE NUT, SELF-LOCKING	1			

FWD  
4B41280-F270

FIG. 28 CALIBRE FRENO DELANTERA FRONT BRAKE CALIPER



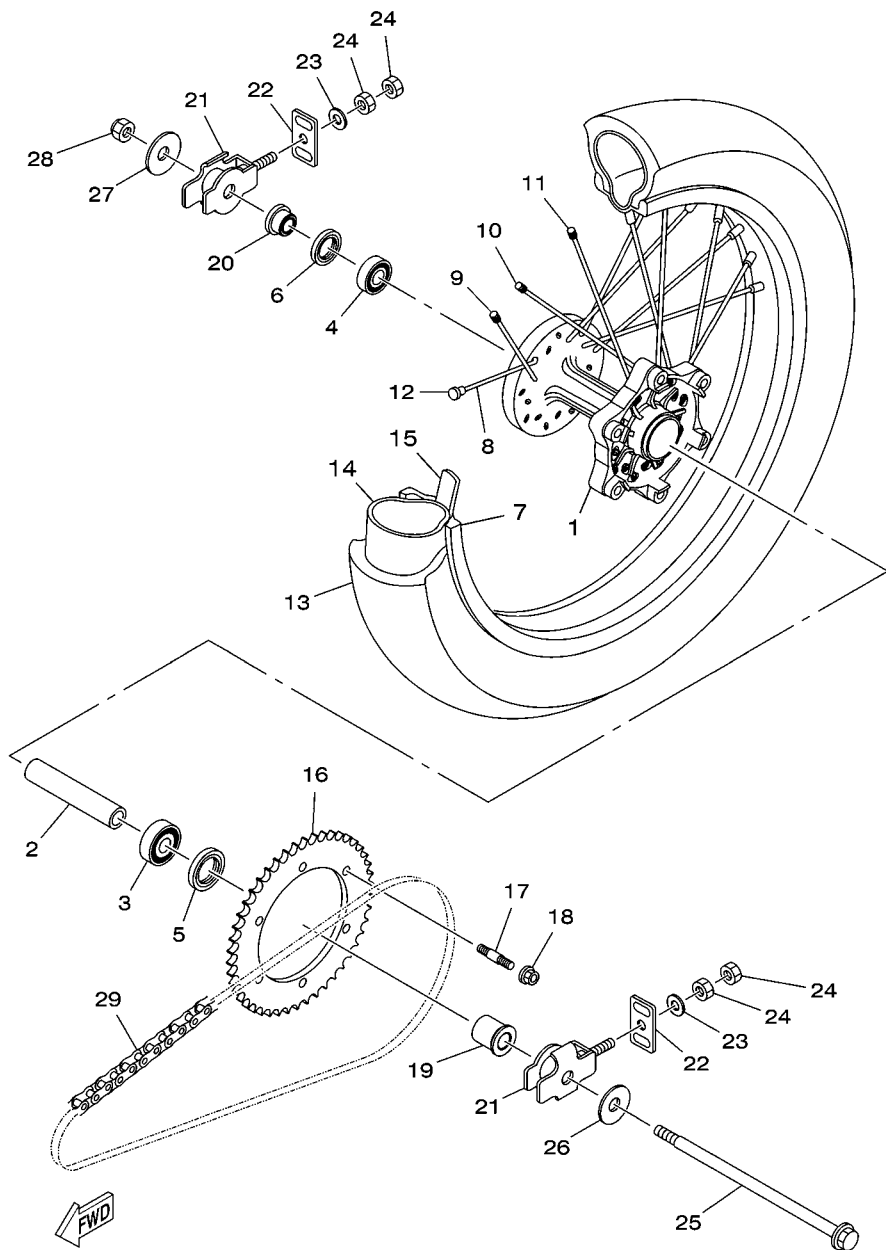
53P1280-K280

REF. N°	CODIGO N° PART NO.	DESCRIPCION DESCRIPTION	20D3				OBSERVACIONES REMARKS
1	4B4-F582T-01	DISCO DE FRENO (IZQUIERDO) DISC, BRAKE (LEFT)	1				
2	90105-06109	TORNILLO BOLT, FLANGE	6				
3	53P-F580T-00	CALIBRE COMPLETO (IZQUIERDO) CALIPER ASSY (LEFT)	1				
4	5RM-F5802-00	.PISTON COMPLETO PINZA .PISTON ASSY, CALIPER	1				
5	5RM-F5803-00	..JUEGO DE RETENES DE PINZA ..CALIPER SEAL KIT	1				
6	53P-F5805-00	.JUEGO DE COJIN DE FRENO .BRAKE PAD KIT	1				
7	5HH-W0048-00	.CJTO TORNILLO DE PURGA .BLEED SCREW KIT	1				
8	5HH-F5934-00	.RESORTE, COJIN .SPRING, PAD	1				
9	5HH-F5924-00	.PASADOR .PIN, PAD	2				
10	5RM-F5921-00	.MENSULA DE SOPORTE .BRACKET, SUPPORT	1				
11	5HH-F5937-00	.FUNDA .BOOT 2	1				
12	5HH-F5926-51	.PERNO .BOLT	1				
13	5HH-F536G-00	.PASADOR .PIN	1				
14	5HH-F5961-00	.TUERCA .NUT	1				
15	5HH-F5917-00	.FUNDA DE CALIBRE .BOOT, CALIPER	1				
16	90105-10638	TORNILLO BOLT, FLANGE	2				

FIG. 29 RUEDA TRASERA

REAR WHEEL

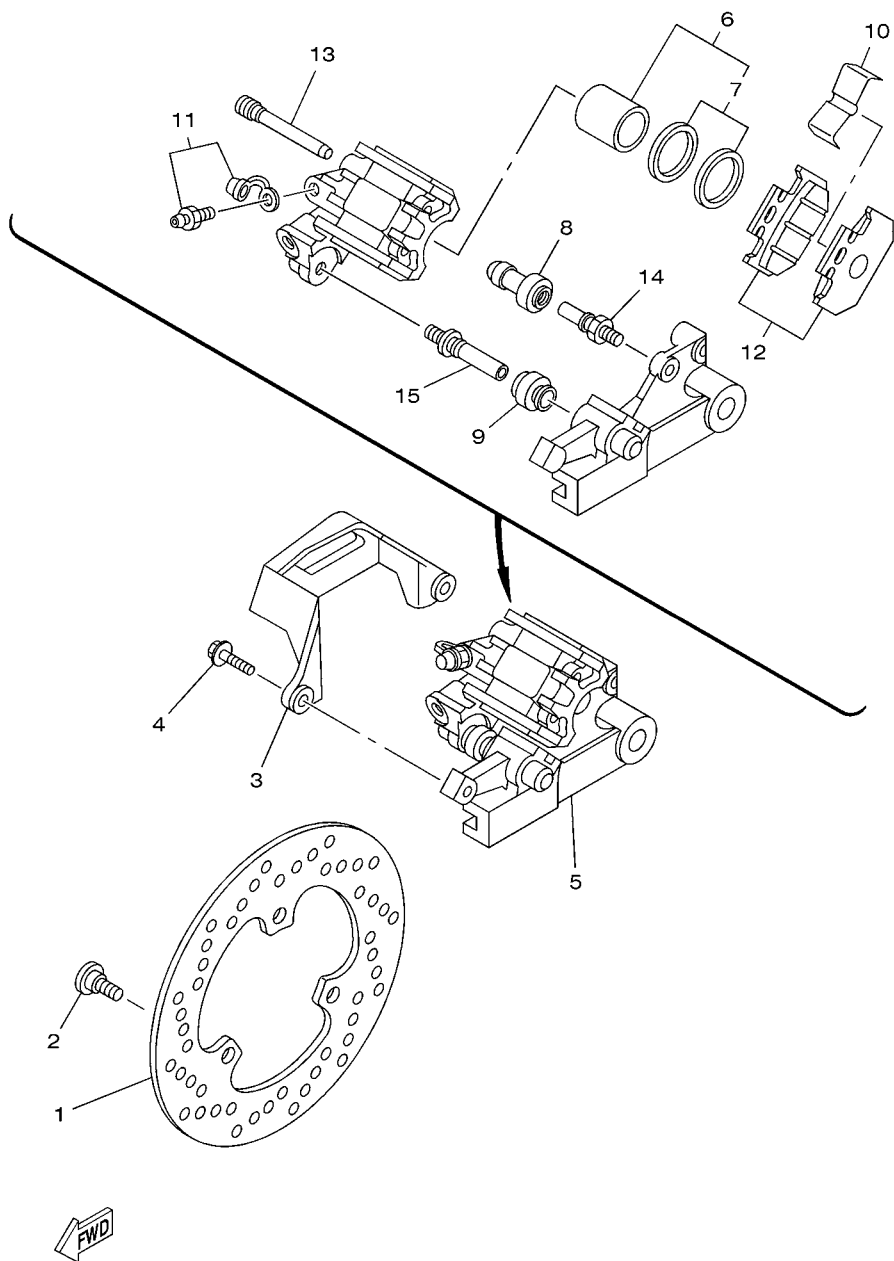
REF. Nº	CODIGO Nº PART NO.	DESCRIPCION DESCRIPTION	2003				OBSERVACIONES REMARKS
1	4B4-F5311-00-35	MASA TRASERA HUB, REAR	1				SL SL
2	4B4-F5317-00	ESPACIADOR DE COJINETE SPACER, BEARING	1				
3	93306-302X6	COJINETE BEARING	1				
4	93306-252Y5	COJINETE BEARING	1				
5	93106-26803	SELLO ACEITE OIL SEAL	1				
6	93106-22801	SELLO ACEITE OIL SEAL	1				
7	94421-18800	ARO (2.15-18) RIM (2.15-18)	1				
8	4B4-F5396-00	RAYOS INTERNO 2 SPOKE, INNER 2	9				
9	4B4-F5397-00	RAYOS EXTERNO 2 SPOKE, OUTER 2	9				
10	4B4-F5391-00	JUEGO RAYOS INTERNO 1 SPOKE SET, INNER 1	9				
11	4B4-F5392-00	JUEGO RAYOS EXTERNO 1 SPOKE SET, OUTER 1	9				
12	2TY-F5195-00	NIPLE NIPPLE, SPOKE	36				
13	94112-18802	NEUMATICO TIRE (120/80 M/C 62S)	1				PIRELLI PIRELLI
14	94210-18W50	TUBO (100/100-18) TUBE (100/100-18)	1				PIRELLI PIRELLI PIRELLI
15	94325-18801	BANDA DE ARO (2.15-18) BAND,RIM (2.15-18)	1				
16	4B4-F5440-00	CORONA (40D) SPROCKET, DRIVE	1				
17	90116-08812	ESPARRAGO BOLT, STUD	6				
18	95607-08200	TUERCA DE AUTO-CIERRE NUT, SELF-LOCKING	6				
19	90387-15W35	ESPACIADOR COLLAR	1				
20	4B4-F5383-00	COLLAR DE RUEDA COLLAR, WHEEL	1				
21	1S4-F5388-00	TIRADOR DE CADENA 1 PULLER, CHAIN 1	2				
22	1S4-F2174-00	EXTREMO 1 END 1	2				
23	9290M-08600	ARANDELA WASHER	2				
24	9530L-08600	TUERCA NUT	4				
25	4B4-25381-00	EJE DE RUEDA AXLE, WHEEL	1				
26	90201-152L7	ARANDELA PLANA WASHER, PLATE	1				
27	90201-145M7	ARANDELA PLANA WASHER, PLATE	1				



4B41280-F290



**FIG. 30 CALIBRE FRENO TRASERA REAR BRAKE CALIPER**



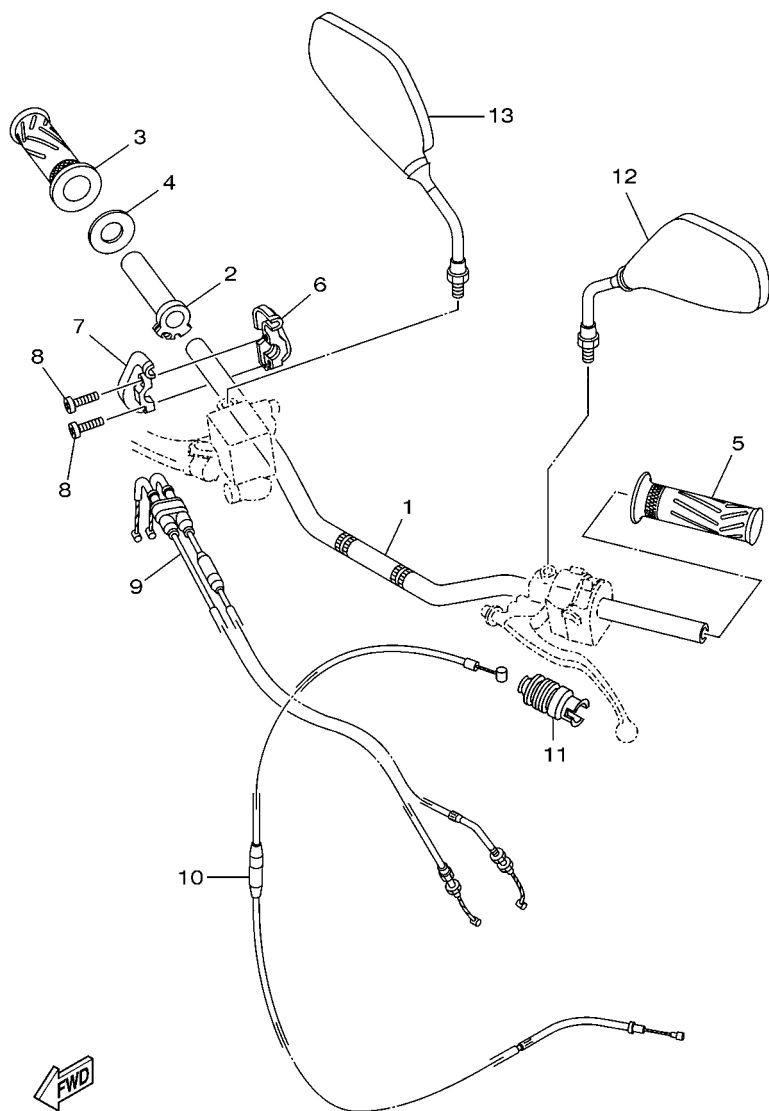
REF. Nº	CODIGO Nº PART NO.	DESCRIPCION DESCRIPTION	20D3				OBSERVACIONES REMARKS
1	5XT-2582W-00	DISCO DE FRENO TRASEROS 2 DISK, REAR BRAKE 2	1				
2	90109-08015	PERNO BOLT	3				
3	4GY-27491-00	PROTECTOR PROTECTOR	1				
4	95027-06016	PERNO, DE BRIDA BOLT, FLANGE	2				
5	3C5-2580W-10	CALIBRE COMPLETO TRASEROS 2 CALIPER ASSY, REAR 2	1				
6	5XT-25802-50	.PISTON COMPLETO PINZA .PISTON ASSY, CALIPER	1				
7	3JD-25803-50	..JUEGO DE RETENES DE PINZA ..CALIPER SEAL KIT	1				
8	1UY-25937-51	.FUNDA .BOOT 2	1				
9	3JD-25917-00	.FUNDA DE CALIBRE .BOOT, CALIPER	1				
10	3SP-25919-51	.SOPORTE DE PASTILLAS .SUPPORT, PAD	1				
11	1UY-W0048-50	.CJTO TORNILLO DE PURGA .BLEED SCREW KIT	1				
12	3C5-25806-00	.JUEGO DE PASTILLAS DE FRENO 2 .BRAKE PAD KIT 2	1				
13	3SP-25924-51	.PASADOR .PIN, PAD	2				
14	3SP-25914-51	.PASADOR .PIN, SLIDE	1				
15	3SP-25926-51	.PERNO .BOLT	1				

4B41280-F300



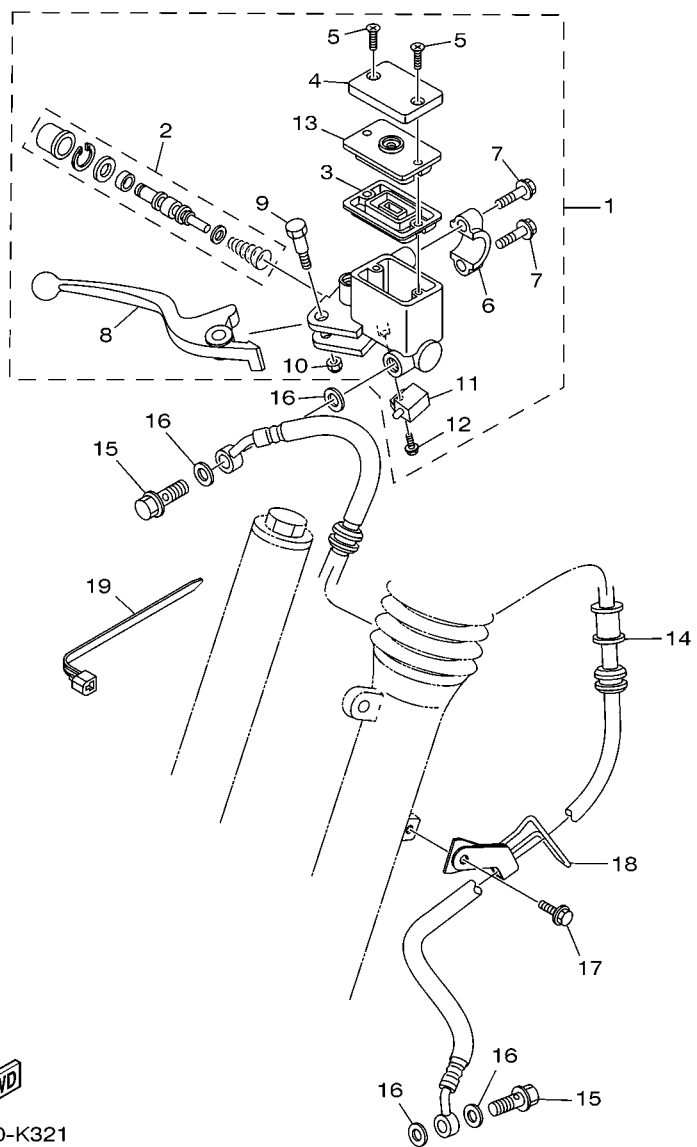
FIG. 31 MANILLAR & CABLE

STEERING HANDLE & CABLE



  
53P6280-M310

REF. Nº	CODIGO Nº PART NO.	DESCRIPCION DESCRIPTION	20D3				OBSERVACIONES REMARKS
1	53P-26111-00	MANUBRIO HANDLEBAR	1				
2	5BE-26243-00	TUBO DE GUIA DE OBTURADOR TUBE, THROTTLE GUIDE	1				
3	4B4-F6242-00	EMPUNADURA (DERECHA) GRIP (RIGHT)	1				
4	2TY-F6249-00	ANILLO DE FLEJE RING, LEAF	1				
5	4B4-F6241-00	EMPUNADURA GRIP	1				
6	1C6-F6281-00	TAPA DE EMPUNADURA SUPERIOR CAP, GRIP UPPER	1				
7	1C6-F6282-00	TAPA, EMPUNADURA INFERIOR CAP, GRIP UNDER	1				
8	9851M-05020	TORNILLO DE CABEZA CON PLANA SCREW, PAN HEAD	2				
9	53P-26302-00	CABLE DE ACELERADOR COMPLETO THROTTLE CABLE ASSY	1				
10	53P-26335-00	CABLE DE EMBRAGUE CABLE, CLUTCH	1				
11	1S4-F6342-00	FUNDA DE CABLE BOOT, CABLE	1				
12	1S4-F6280-01	ESPEJO COMPLETO (IZQUIERDO) REAR VIEW MIRROR ASSY (LEFT)	1				
13	1S4-F6290-01	ESPEJO COMPLETO (DERECHO) REAR VIEW MIRROR ASSY (RIGHT)	1				
-----							
-----							
-----							
-----							
-----							



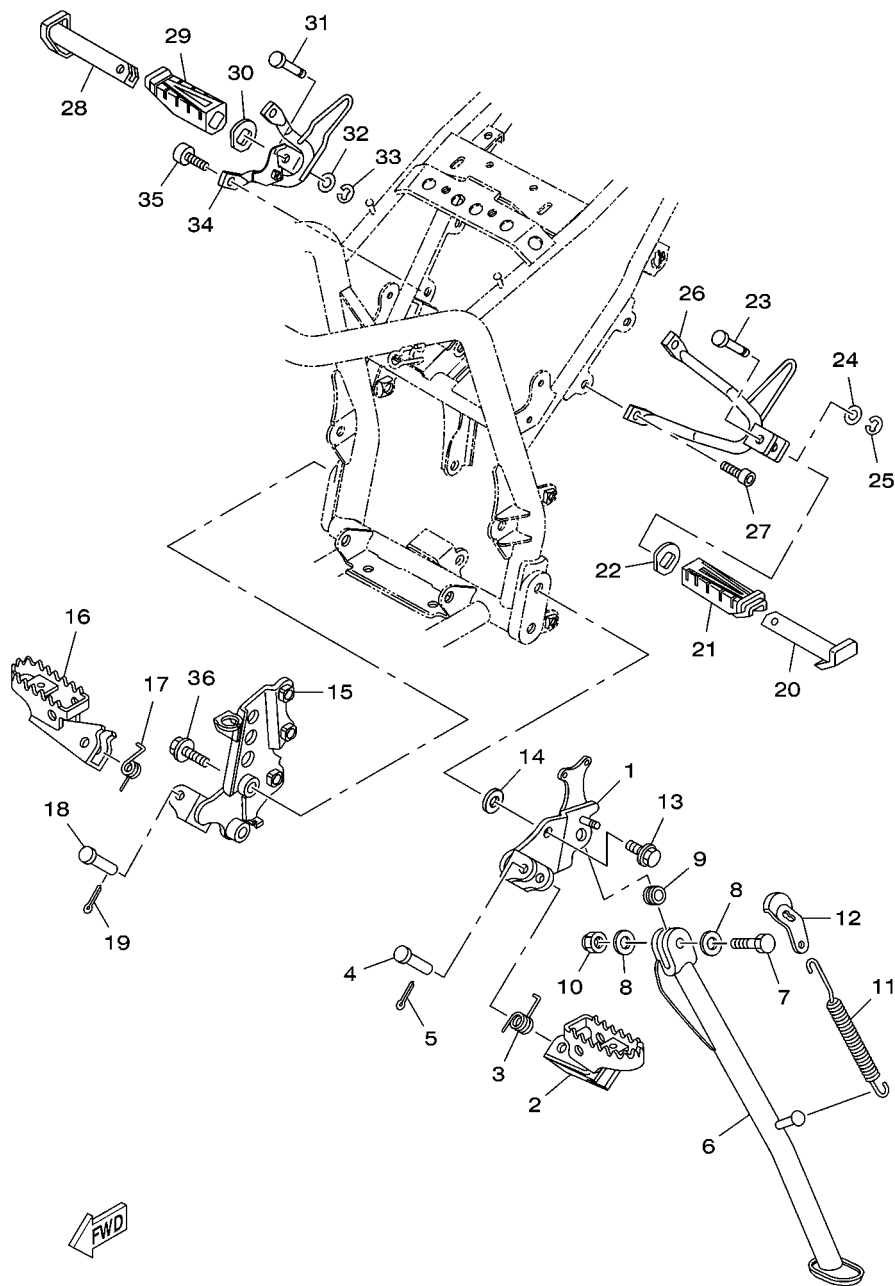
53P1280-K321

FIG. 32 CILINDRO MAESTRO DELANTERO FRONT MASTER CYLINDER

REF. N°	CODIGO N° PART NO.	DESCRIPCION DESCRIPTION	20D3				OBSERVACIONES REMARKS
1	4B4-F583T-20	CILINDRO MAESTRO COMPLETO MASTER CYLINDER ASSY	1				
2	5RM-F5807-00	.JUEGO DE CILINDRO MAESTRO .CYLINDER KIT, MASTER	1				
3	5HH-F5854-00	.EMPAQUE, DIAFRAGMA .DIAPHRAGM, RESERVOIR	1				
4	3GM-F5852-00	.TAPA DE TANQUE DE RESERVA .CAP, RESERVOIR	1				
5	98707-04012	.TORNILLO DE CABEZA PLANA .SCREW, FLAT HEAD	2				
6	18D-F5867-00	.SOPORTE DE CILINDRO MAESTRO .BRACKET, MASTER CYLINDER	1				
7	5HH-F6332-00	.TORNILLO .BOLT, FLANGE	2				
8	4B4-H3922-10	.PALANCA 2 .LEVER 2	1				
9	2DP-F589F-00	.PERNO DE PALANCA .BOLT, LEVER	1				
10	95602-06100	.TUERCA U .NUT, U	1				
11	1HP-83980-01	.INTERRUP. DE PARADA DELANTERO .FRONT STOP SWITCH ASSY	1				
12	97602-04312	.TORNILLO CON RONDONA .SCREW, PAN HEAD WITH WASHER	1				
13	5LW-F585B-00	.PLACA, DIAFRAGMA .PLATE, DIAPHRAGM	1				
14	53P-F5872-10	MANGUERA DE FRENO 1 HOSE, BRAKE 1	1				
15	90401-10159	PERNO DE UNION BOLT, UNION	2				
16	90201-10118	ARANDELA PLANA WASHER, PLATE	4				
17	95807-06012	TORNILLO BOLT, FLANGE	1				
18	53P-F5887-00	SOPORTE DE MANGUERA FRENO HOLDER, BRAKE HOSE	1				
19	90464-12045	BRIDA CLAMP	1				

FIG. 33 SOPORTE & APOYAPIE

STAND & FOOTREST

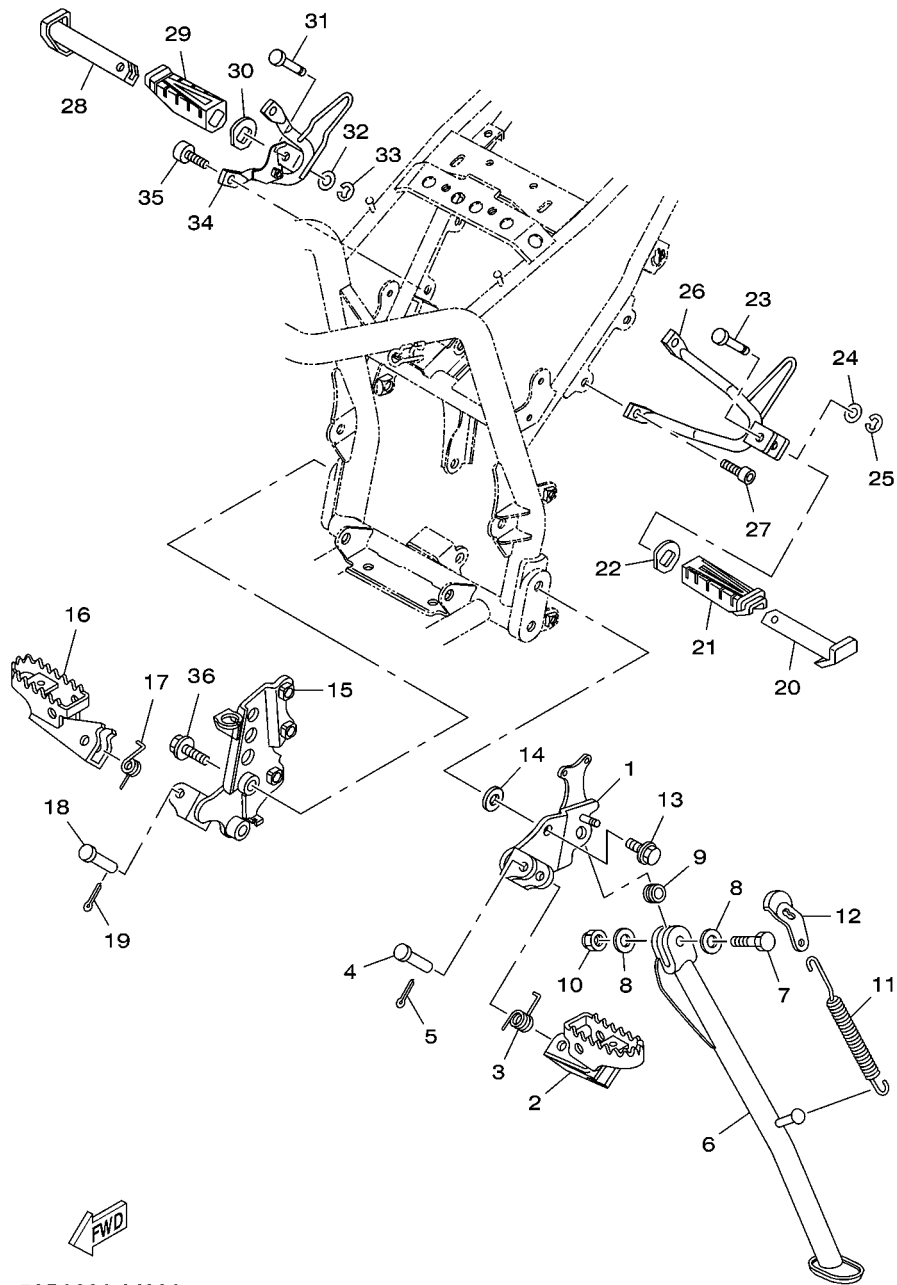


53P6280-M330

REF. Nº	CODIGO Nº PART NO.	DESCRIPCION DESCRIPTION	2003				OBSERVACIONES REMARKS
1	4B4-F7412-01	SOPORTE DE APOYAPIE 1 BRACKET, FOOTREST 1	1				
2	4VW-F7411-00	APOYAPIE 1 FOOTREST 1	1				
3	90508-20W07	RESORTE DE TORSION SPRING, TORSION	1				
4	90240-08W04	PASADOR CON HOYO PIN, CLEVIS	1				
5	91401-25015	CHAVETA PIN, COTTER	1				
6	4D8-F7311-00	PUNTAL LATERAL STAND, SIDE	1				
7	90101-10812	TORNILLO BOLT	1				
8	90201-101J1	ARANDELA PLANA WASHER, PLATE	2				
9	90387-10003	ESPACIADOR COLLAR	1				
10	90185-10012	TUERCA AUTOBLOCANTE NUT, SELF-LOCKING	1				
11	90506-35473	RESORTE DE TENSION SPRING, TENSION	1				
12	4B4-F7315-00	CONEXION DE PUNTAL LATERAL LINK, SIDE STAND	1				
13	95817-10025	TORNILLO BOLT, FLANGE	2				
14	9290M-10200	ARANDELA WASHER	2				
15	4B4-F7422-00	SOPORTE DE APOYAPIE 2 BRACKET, FOOTREST 2	1				
16	4VW-F7421-00	APOYAPIE 2 FOOTREST 2	1				
17	90508-20W07	RESORTE DE TORSION SPRING, TORSION	1				
18	90240-08W04	PASADOR CON HOYO PIN, CLEVIS	1				
19	91401-25015	CHAVETA PIN, COTTER	1				
20	5HH-F7431-00	APOYAPIE POSTERIOR 1 FOOTREST, REAR 1	1				
21	5HH-F7433-00	CUBIERTA APOYAPIE TRASERO 1 COVER, REAR FOOTREST 1	1				
22	5HH-F7445-01	PLACE 1 PLATE 1	1				
23	90249-06220	PASADOR PIN	1				
24	9290L-06200	ARANDELA WASHER	1				
25	99001-05600	PRESILLA REDONDA CIRCLIP	1				
26	5RM-F7432-10-33	SOPORTE 1 BRACKET 1	1				YB
27	91317-08020	PERNO BOLT	2				YB

FIG. 33 SOPORTE & APOYAPIE

STAND & FOOTREST

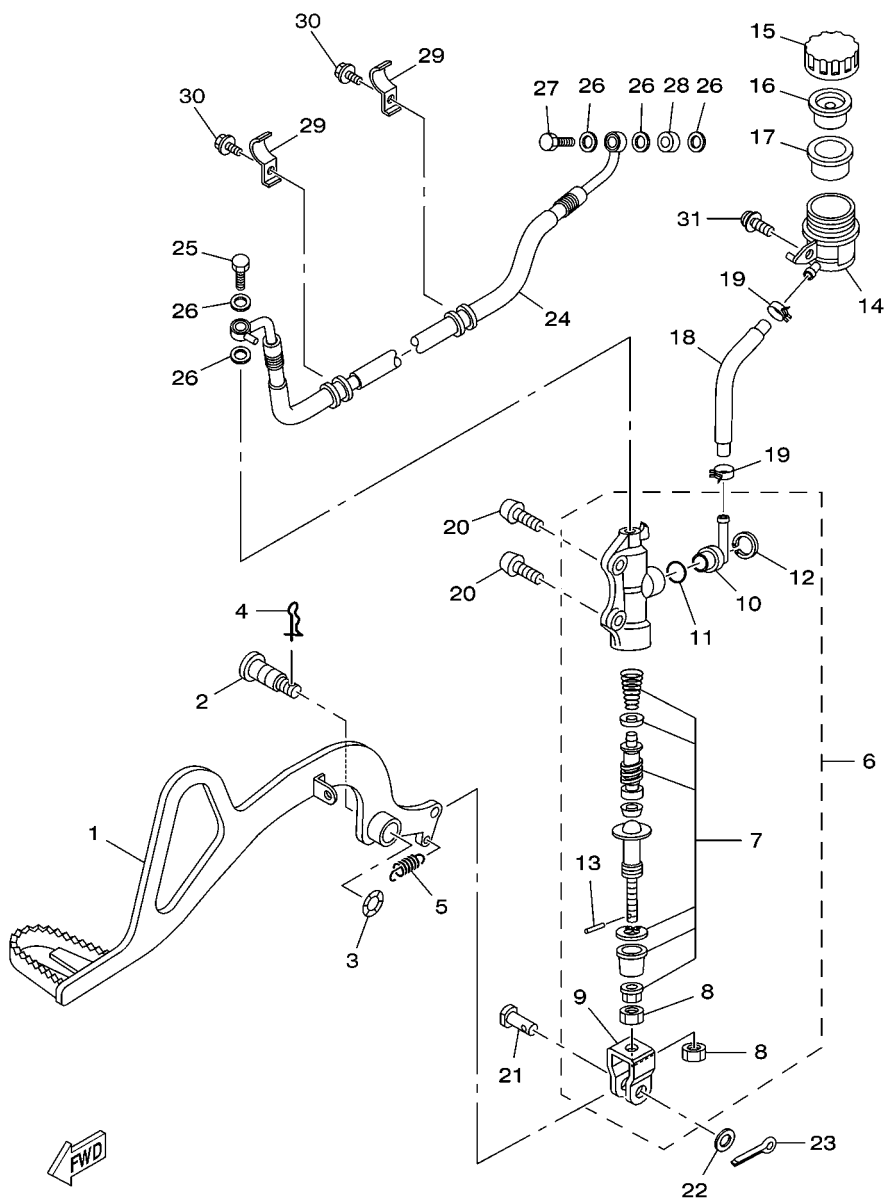


REF. Nº	CODIGO Nº PART NO.	DESCRIPCION DESCRIPTION	2003				OBSERVACIONES REMARKS
28	5HH-F7441-00	APOYAPIE POSTERIOR 2 FOOTREST, REAR 2	1				
29	5HH-F7444-00	CUBIERTA APOYAPIE TRASERO COVER, REAR FOOTREST	1				
30	5HH-F7445-01	PLACE 1 PLATE 1	1				
31	90249-06220	PASADOR PIN	1				
32	9290L-06200	ARANDELA WASHER	1				
33	99001-05600	PRÉSILLA REDÓNDA CIRCLIP	1				
34	4B4-F7442-00-33	SOPORTE 2 BRACKET 2	1				YB YB
35	91317-08020	PERNO BOLT	2				
36	95817-10030	TORNILLO BOLT, FLANGE	2				
-----							
-----							
-----							
-----							
-----							
-----							
-----							
-----							
-----							
-----							

53P6280-M330

FIG. 34 CILINDRO MAESTRO TRASERO REAR MASTER CYLINDER

REF. Nº	CODIGO Nº PART NO.	DESCRIPCION DESCRIPTION	20D3				OBSERVACIONES REMARKS
1	4B4-F7211-00	PEDAL DE FRENO PEDAL, BRAKE	1				
2	5RM-F7261-00	EJE SHAFT	1				
3	90206-14001	ARANDELA ONDULADA WASHER, WAVE	1				
4	90468-20196	PRESILLA CLIP	1				
5	90506-23801	RESORTE DE TENSION SPRING, TENSION	1				
6	5TG-2580E-00	CILINDRO MAESTRO TRASERO COMP REAR MASTER CYLINDER ASSY	1				
7	5TG-W0042-50	JUEGO DE CILINDRO MAESTRO CYLINDER KIT, MASTER	1				
8	4SS-27218-00	TUERCA NUT	2				
9	2YK-27222-00	UNION JOINT	1				
10	2VN-2582A-50	CONECTOR JOINT	1				
11	93210-15620	ANILLO O O-RING	1				
12	2VN-25866-00	PRESILLA REDONDA CIRCLIP	1				
13	3KW-27234-00	PASADOR DE VARILLA DE FRENO PIN, BRAKE ROD	1				
14	5TG-25894-00	TANQUE DE RESERVA TANK, RESERVOIR	1				
15	3XP-25852-50	TAPA DE TANQUE DE RESERVA CAP, RESERVOIR	1				
16	2VN-25854-00	EMPAQUE, DIAFRAGMA DIAPHRAGM, RESERVOIR	1				
17	2VN-25855-00	BUJE DE DIAFRAGMA BUSH, DIAPHRAGM	1				
18	4B4-25895-00	MANGUERA DE TANQUE DE RESERVA HOSE, RESERVOIR	1				
19	90467-12085	PRESILLA CLIP	2				
20	92017-08025	PERNO BOLT, BUTTON HEAD	2				
21	90240-08124	PASADOR CON HOYO PIN, CLEVIS	1				
22	90201-08083	ARANDELA PLANA WASHER, PLATE	1				
23	91401-16012	CHAVETA PIN, COTTER	1				
24	4B4-F5873-10	MANGUERA DE FRENO 2 HOSE, BRAKE 2	1				
25	90401-10159	PERNO DE UNION BOLT, UNION	1				
26	90201-10118	ARANDELA PLANA WASHER, PLATE	5				
27	90401-10038	PERNO DE UNION BOLT, UNION	1				

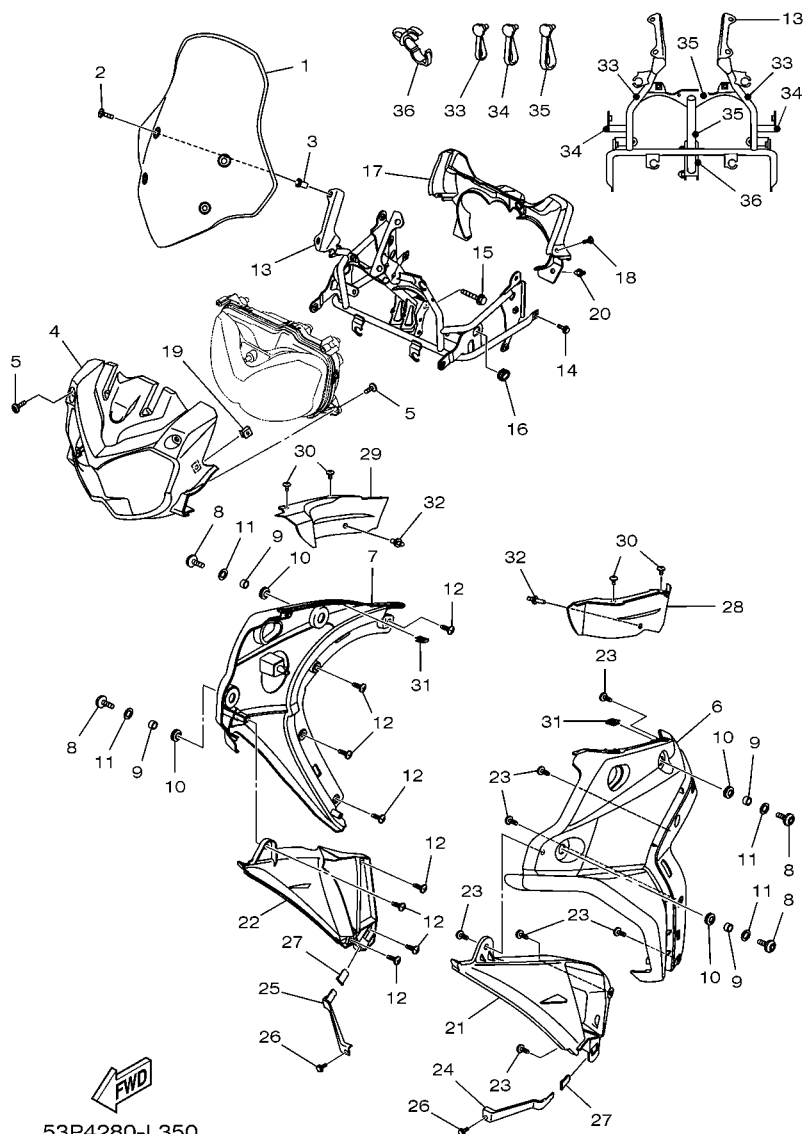


4B49280-M340



FIG. 35 BOVEDA 1

COWLING 1

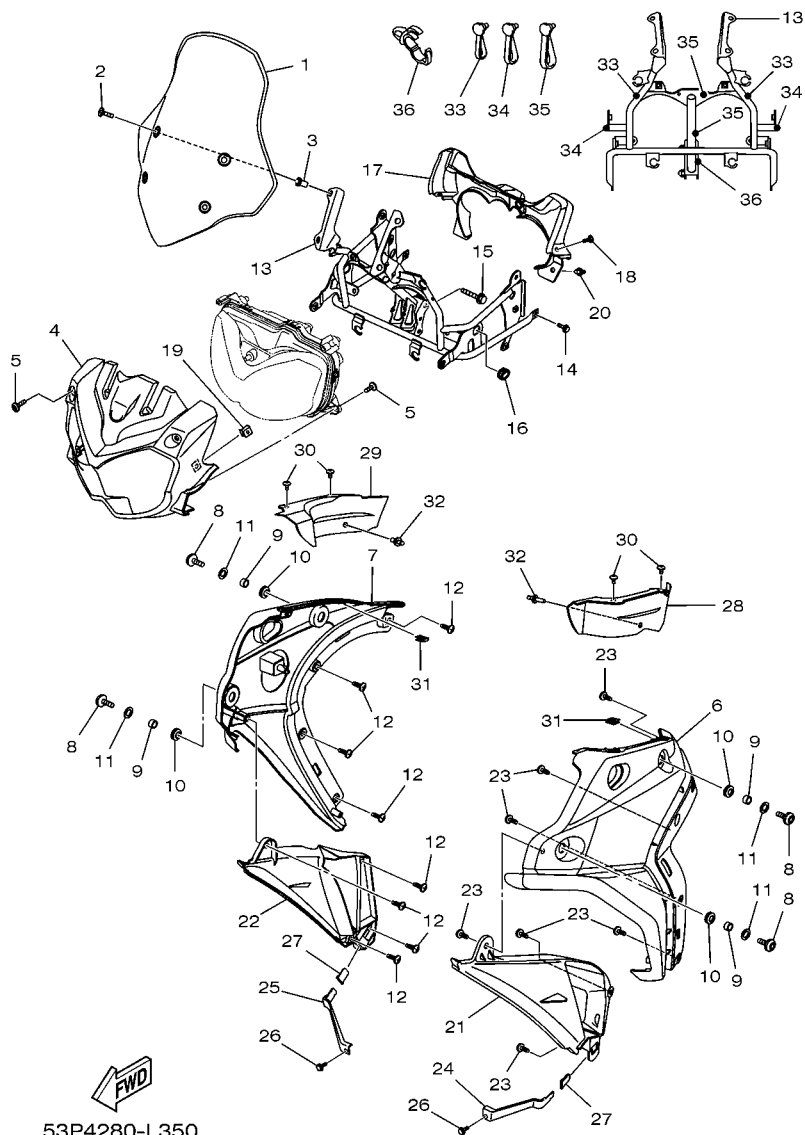


53P4280-L350

REF. Nº	CODIGO Nº PART NO.	DESCRIPCION DESCRIPTION	2DD3			OBSERVACIONES REMARKS
1	53P-28381-00	PARABRISA WINDSHIELD	1			
2	90150-05024	TORNILLO CABEZA REDONDA SCREW, ROUND HEAD	4			
3	90179-05003	TUERCA NUT	4			
4	53P-F835G-00	CARROCERIA, DELANT. SUP. 1 BODY, FRONT UPPER 1	1			
5	90169-05003	TORNILLO TAPPING SCREW	4			
6	53P-F842M-00-P0	CUBIERTA 1 COVER 1	1			MBL2
7	53P-F842N-00-P0	CUBIERTA 2 COVER 2	1			MBL2 MBL2
8	90149-06302	TORNILLO DE REGLAJE SCREW	4			
9	90387-10815	ESPACIADOR COLLAR	4			
10	90480-15397	TAPON GROMMET	4			
11	90201-064H0	ARANDELA PLANA WASHER, PLATE	4			
12	97707-50016	TORNILLO SCREW, TRUSS HEAD TAPPING	8			
13	53P-F8356-01	SOPORTE 1 STAY 1	1			
14	95817-06012	TORNILLO BOLT, FLANGE	2			
15	95817-08035	TORNILLO BOLT, FLANGE	2			
16	90480-01868	TAPON GROMMET	2			
17	53P-F836K-00	PANEL 1 PANEL, INNER 1	1			
18	90167-05080	TORNILLO DE ROSCA HEMBRA SCREW, TAPPING	2			
19	90183-05042	TUERCA DE RESORTE NUT, SPRING	2			
20	90269-07077	REMACHE RIVET	2			
21	53P-F838N-00	CONDUCTO 1 DUCT 1	1			
22	53P-F838R-00	CONDUCTO 2 DUCT 2	1			
23	97707-50016	TORNILLO SCREW, TRUSS HEAD TAPPING	8			
24	53P-F137F-00	SOPORTE 1 STAY 1	1			
25	53P-F137G-00	SOPORTE 2 STAY 2	1			
26	95817-06010	TORNILLO BOLT, FLANGE	2			
27	53P-F8371-00	AMORTIGUADOR DAMPER	2			

FIG. 35 BOVEDA 1

COWLING 1

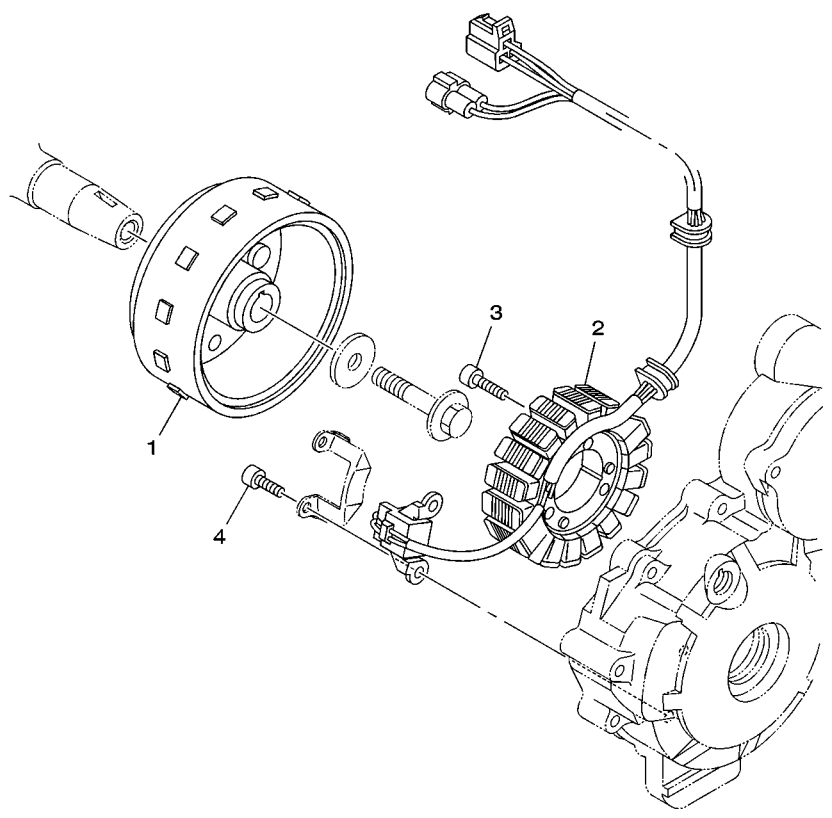


REF. Nº	CODIGO Nº PART NO.	DESCRIPCION DESCRIPTION	20D3				OBSERVACIONES REMARKS
28	53P-F837L-00	PANEL DE CONSOLA PANEL, CONSOLE 1	1				
29	53P-F837M-00	PANEL, DE CONSOLA 2 PANEL, CONSOLE 2	1				
30	90111-05003	TORNILLO BOLT, HEX. SOCKET BUTTON	4				
31	90183-05076	TUERCA DE RESORTE NUT, SPRING	4				
32	90269-07077	REMACHE RIVET	2				
33	90464-05003	BRIDA CLAMP	2				
34	90464-09026	BRIDA CLAMP	2				
35	90464-14009	BRIDA CLAMP	2				
36	90464-13249	BRIDA CLAMP	1				



FIG. 36 GENERADOR

GENERATOR



REF. Nº	CODIGO Nº PART NO.	DESCRIPCION DESCRIPTION	20D3				OBSERVACIONES REMARKS
1	44C-H1450-00	ROTOR COMPLETO ROTOR ASSY	1				
2	44C-H1410-01	ESTATOR COMPLETO STATOR ASSY	1				
3	9131M-06030	PERNO BOLT	3				
4	9131M-05012	PERNO BOLT	2				
-----							
-----							
-----							
-----							
-----							
-----							
-----							
-----							
-----							

  
 44C5280-K350



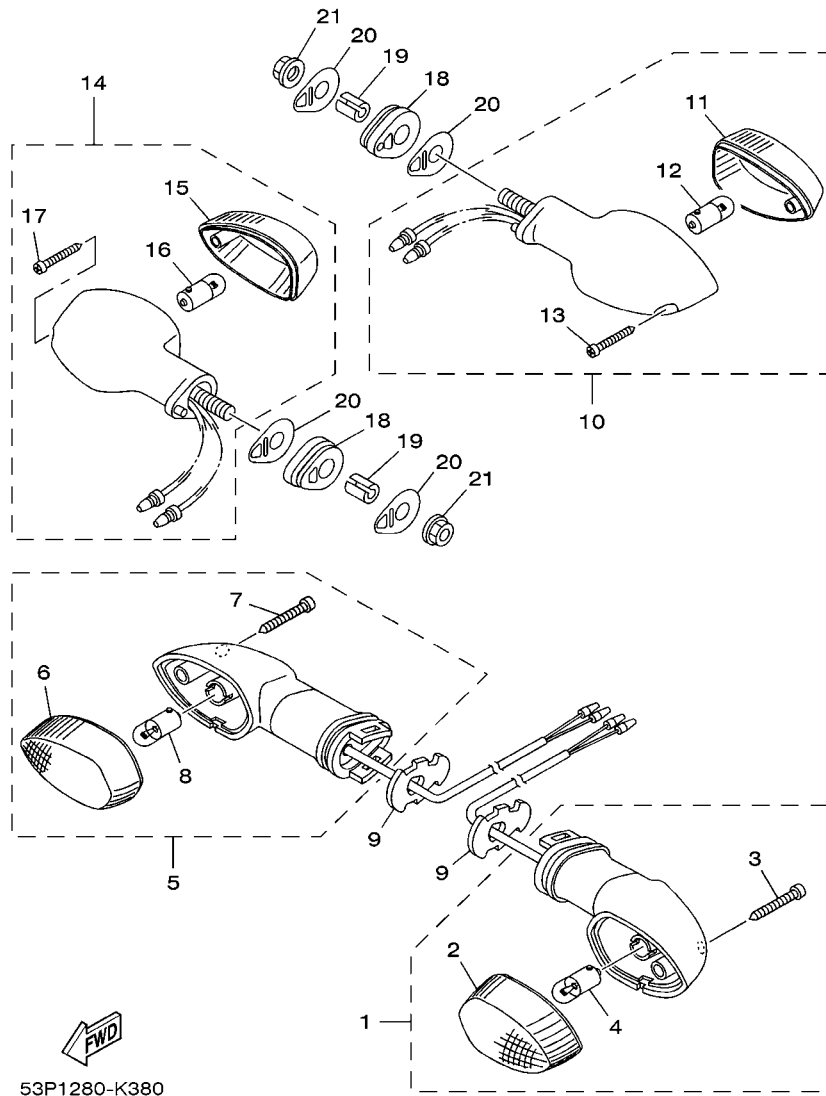
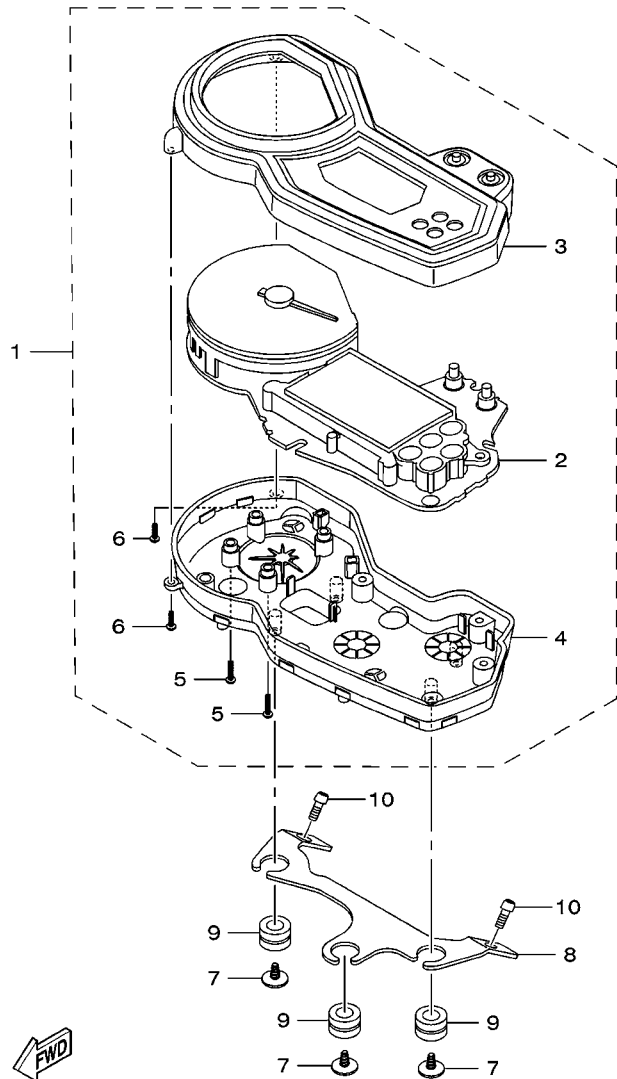


FIG. 38 LUZ DE DESTELLADOR

FLASHER LIGHT

REF. Nº	CODIGO Nº PART NO.	DESCRIPCION DESCRIPTION	20D3				OBSERVACIONES REMARKS
1	53P-H3310-00	DESTELLADOR DE LUZ DELANT. FRONT FLASHER LIGHT ASSY 1	1				
2	18D-H3312-00	.LENTE DE DESTELLADOR .LENS, FLASHER	1				
3	18D-H3333-00	.TORNILLO ACCESORIO DE LENTE .SCREW, LENS FITTING	1				
4	42K-H3311-00	.BOMBILLA, DESTELLADOR(12V/10W) .BULB, FLASHER (12V/10W)	1				
5	53P-H3320-00	DESTELLADOR DE LUZ DELANT. FRONT FLASHER LIGHT ASSY 2	1				
6	18D-H3312-00	.LENTE DE DESTELLADOR .LENS, FLASHER	1				
7	18D-H3333-00	.TORNILLO ACCESORIO DE LENTE .SCREW, LENS FITTING	1				
8	42K-H3311-00	.BOMBILLA, DESTELLADOR(12V/10W) .BULB, FLASHER (12V/10W)	1				
9	18D-H3318-00	SOPORTE DE DESTELLADOR 1 STAY, FLASHER 1	2				
10	4B4-H3330-02	DESTELLADOR DE LUZ TRAS.COMPL. REAR FLASHER LIGHT ASSY 1	1				
11	1S4-H3312-00	.LENTE DE DESTELLADOR .LENS, FLASHER	1				
12	42K-H3311-00	.BOMBILLA, DESTELLADOR(12V/10W) .BULB, FLASHER (12V/10W)	1				
13	9770M-06025	.TORNILLO ROSCA HEMBRA .SCREW, TAPPING	1				
14	4B4-H3340-02	DESTELLADOR DE LUZ TRAS.COMPL. REAR FLASHER LIGHT ASSY 2	1				
15	1S4-H3312-00	.LENTE DE DESTELLADOR .LENS, FLASHER	1				
16	42K-H3311-00	.BOMBILLA, DESTELLADOR(12V/10W) .BULB, FLASHER (12V/10W)	1				
17	9770M-06025	.TORNILLO ROSCA HEMBRA .SCREW, TAPPING	1				
18	5HH-H3321-01	AMORTIGUADOR DE DESTELLADOR 1 DAMPER, FLASHER 1	2				
19	5RM-H3316-00	ESPACIADOR DE DESTELLADOR 1 COLLAR, FLASHER 1	2				
20	5HH-H3359-02	ARANDELA ESPECIAL WASHER, SPECIAL	4				
21	9570M-08500	TUERCA DE BRIDA NUT, FLANGE	2				



  
 53P1280-K390

FIG. 39 MEDIDOR

METER

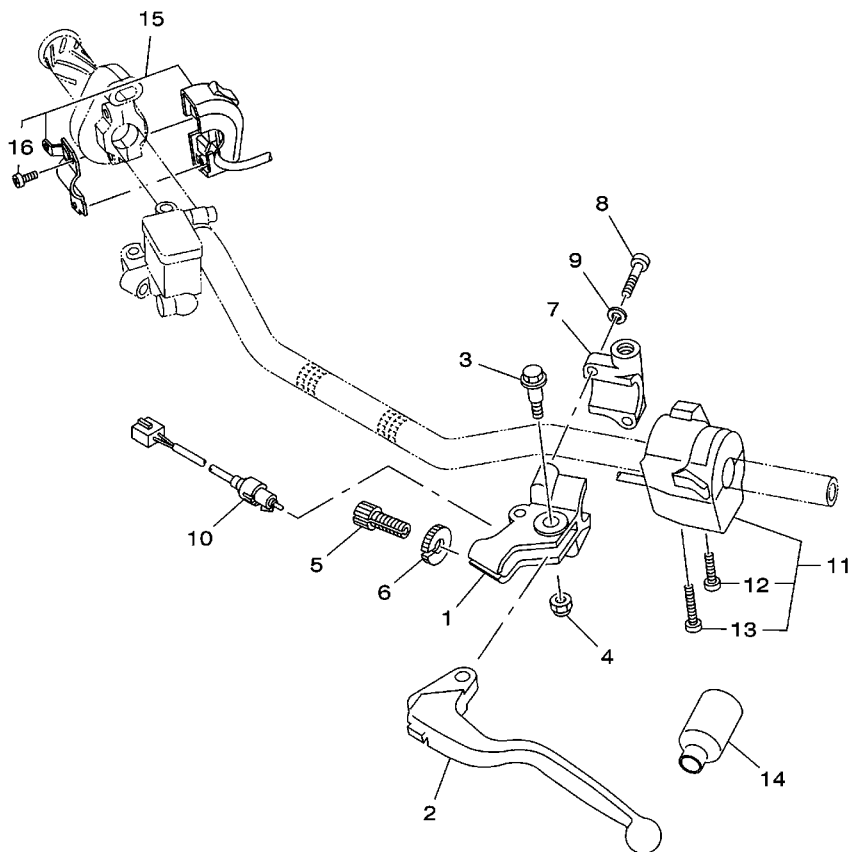
REF. Nº	CODIGO Nº PART NO.	DESCRIPCION DESCRIPTION	20D3				OBSERVACIONES REMARKS
1	53P-H3500-00	METRO COMPLETO METER ASSY	1				
2	53P-H3570-00	.VELOCIMETRO COMPLETO .SPEEDOMETER ASSY	1				
3	44C-H353E-00	.CAJA DE MEDIDOR SUPERIOR .CASE, METER UPPER	1				
4	44C-H3572-00	.CAJA DE VELOCIMETRO INFERIOR .CASE, SPEEDOMETER LOWER	1				
5	4PS-83616-10	.TORNILLO .SCREW, TAPPING	9				
6	44C-H3616-10	.TORNILLO .SCREW, TAPPING	2				
7	90164-05014	TORNILLO ROSCA HEMBRA SCREW, TAPPING	3				
8	53P-H3519-00	SOPORTE DE MEDIDOR BRACKET, METER	1				
9	90480-14555	TAPON GROMMET	3				
10	92017-06010	PERNO BOLT, BUTTON HEAD	2				



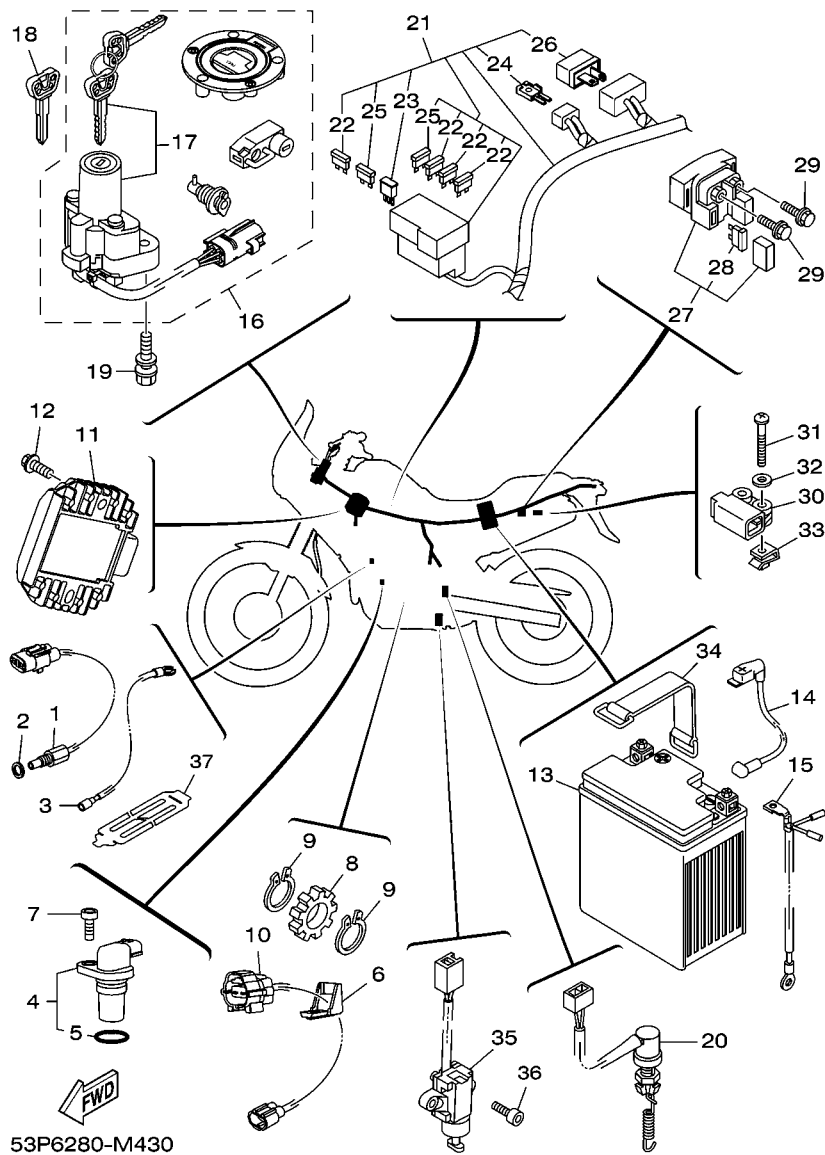


FIG. 42 INTERRUPTOR DE MANILLAR&PALANC HANDLE SWITCH & LEVER

REF. Nº	CODIGO Nº PART NO.	DESCRIPCION DESCRIPTION	2DD3				OBSERVACIONES REMARKS
1	2TY-H2911-00	SOPORTE DE LEVA 1 HOLDER, LEVER 1	1				
2	1S4-H3912-00	PALANCA 1 LEVER 1	1				
3	4LR-H3945-00	PERNO DE PALANCA BOLT, LEVER	1				
4	95607-06100	TUERCA AUTOBLOCANTE NUT, U	1				
5	90123-08046	PERNO BOLT	1				
6	90179-08148	TUERCA NUT	1				
7	2TY-H2915-01	SOPORTE DE LEVA HOLDER, LEVER UNDER	1				
8	9702M-05020	PERNO BOLT	2				
9	9290M-05100	ARANDELA WASHER	2				
10	4B4-H3980-00	INTERRUP. DE EMBRAGUE SWITCH, CLUTCH ASSY	1				
11	2DD-H3972-00	INTERRUPTOR DE MANIJA 4 SWITCH, HANDLE 4	1				
12	9850M-05030	.TORNILLO DE CABEZA CON PLANA .SCREW, PAN HEAD	1				
13	9850M-05040	.TORNILLO DE CABEZA CON PLANA .SCREW, PAN HEAD	1				
14	1B2-H2599-00	CUBIERTA DE CONECTOR COVER, CONNECTER	1				
15	53P-H3975-00	INTERRUPTOR DE MANIJA 2 SWITCH, HANDLE 2	1				
16	98507-05018	.TORNILLO DE CABEZA PLANA .SCREW, PAN HEAD	2				



2DD1280-N420



53P6280-M430

FIG. 43 EQUIPO ELECTRICO 1

ELECTRICAL 1

REF. Nº	CODIGO Nº PART NO.	DESCRIPCION DESCRIPTION	2003			OBSERVACIONES REMARKS
1	1S4-83591-01	UNIDAD TERMOSTATO THERMO UNIT	1			
2	90430-08204	JUNTA GASKET	1			
3	4B4-H2541-00	CABLE CONDUCTOR WIRE, LEAD	1			
4	1S4-83755-01	SENSOR DE VELOCIDAD SENSOR, SPEED	1			
5	1S4-81168-00	.ANILLO O .O-RING	1			
6	1S4-H6251-00	GUIA DE SENSOR SENSOR, GUIDE	1			
7	91317-06014	PERNO BOLT	1			
8	12B-H354W-00	ROTOR ROTOR	1			
9	93410-17037	SEGURO CIRCLIP	2			
10	1S4-H2509-00	CABLE SUBCONDUCTOR WIRE, SUB LEAD	1			
11	5BN-81960-00	RECTIFICADOR Y REGULADOR RECTIFIER & REGULATOR ASSY	1			
12	9580M-06020	TORNILLO BOLT, FLANGE	2			
13	44C-H2100-01	BATERIAL (XTZ7L - HELIAR) BATTERY ASSY (XTZ7L - HELIAR)	1			
14	53P-H2115-00	CABLE CONDUCTOR POSITIVO WIRE, PLUS LEAD	1			
15	53P-H2116-00	CABLE CONDUCTOR NEGATIVO WIRE, MINUS LEAD	1			
16	53P-82021-10	JUÉGO DE LLAVE KEY SET	1			
17	53P-82501-10	.LLAVE DE IGNICION COMPLT .MAIN SWITCH STEERING LOCK	1			AP AP
18	4BH-82511-09	LLAVE EN BLANCO BLANK KEY	1			
19	90109-08196	PERNO BOLT	2			
20	13S-82530-00	INTERRUPTOR DE PARADA COMPLETO STOP SWITCH ASSY	1			
21	2DD-H2590-00	CONJUNTO DE CABLES WIRE HARNESS ASSY	1			
22	1S4-H2151-00	.FUSIBLE .FUSE (10A)	4			
23	4B4-H1980-00	.CONJUNTO DIODO .DIODE ASSY	1			
24	4B4-H1980-10	.CONJUNTO DIODO .DIODE ASSY	1			
25	1S4-H2151-10	.FUSIBLE .FUSE (15A)	2			
26	4WA-81980-00	.CONJUNTO DIODO .DIODE ASSY	1			
27	4SV-81940-12	ARRANCADOR RELEVO (RC19-015) STARTER RELAY ASSY (RC19-015)	1			



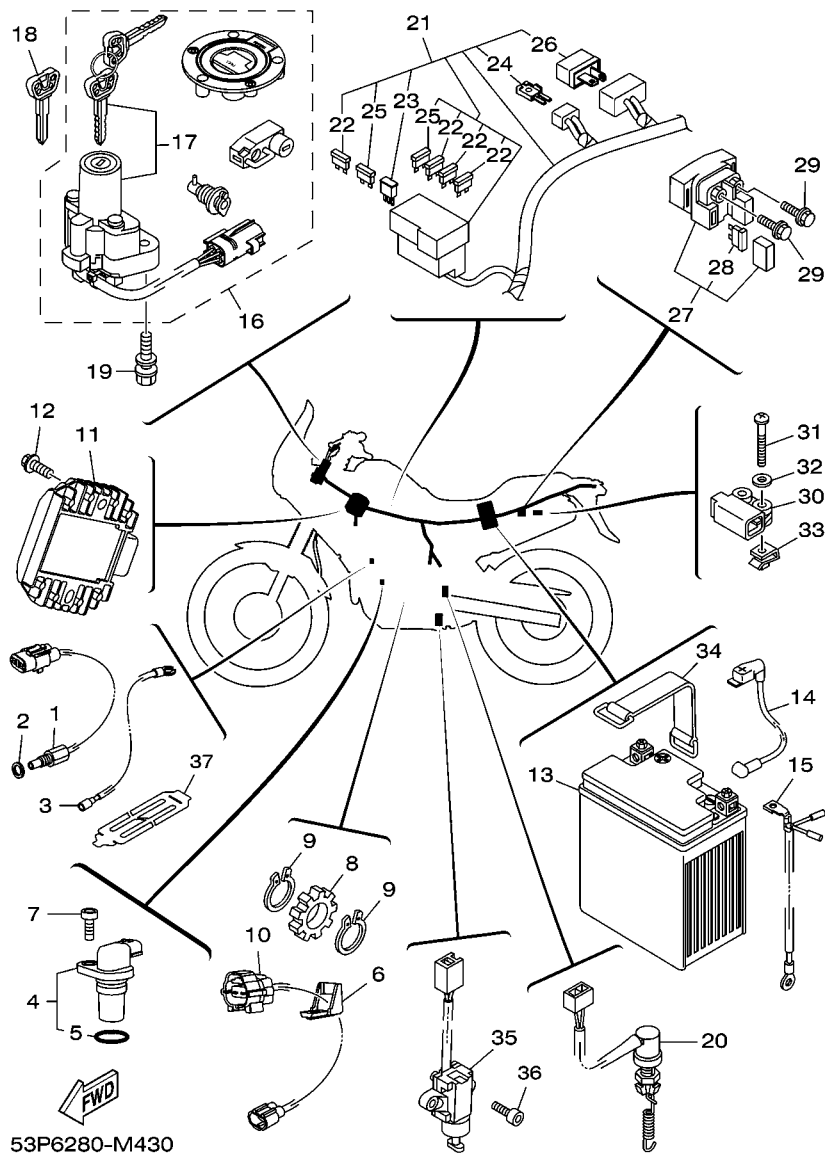


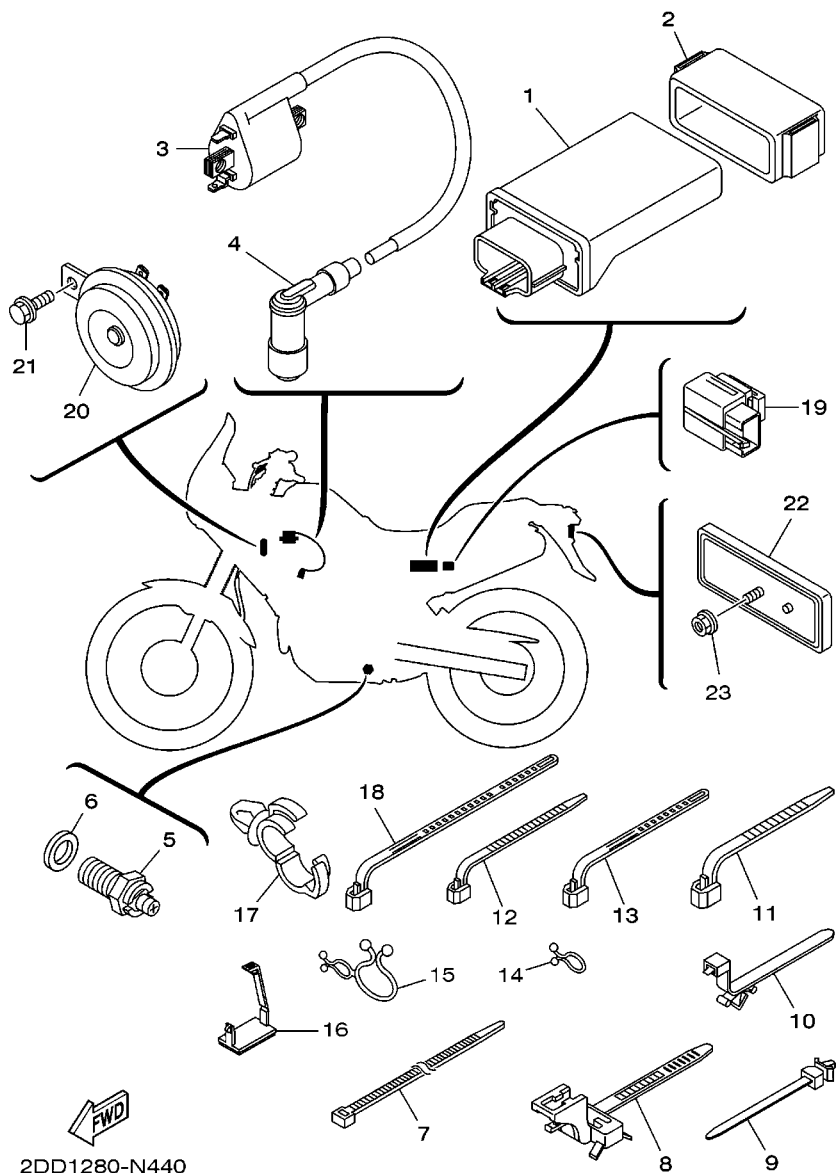
FIG. 43 EQUIPO ELECTRICO 1

ELECTRICAL 1

REF. Nº	CODIGO Nº PART NO.	DESCRIPCION DESCRIPTION	20D3				OBSERVACIONES REMARKS
28	1AE-82151-00	.FUSIBLE (30A-BL) .FUSE (30A-BL)	2				
29	9502M-06008	PERNO, DE BRIDA BOLT, FLANGE	2				
30	5VU-82576-01	SENSOR ANGULO DE INCLINACION SENSOR, LEAN ANGLE	1				
31	98507-04025	TORNILLO DE CABEZA PLANA SCREW, PAN HEAD	2				
32	90201-04804	ARANDELA PLANA WASHER, PLATE	2				
33	90183-04039	TUERCA DE RESORTE NUT, SPRING	2				
34	1C6-H2131-00	TIRANTE DE BATERIA BAND, BATTERY	1				
35	3LD-82566-40	INTERRUPTOR SWITCH, SIDE STAND	1				
36	98507-05016	TORNILLO DE CABEZA PLANA SCREW, PAN HEAD	2				
37	1S4-H252U-00	CUBIERTA COVER	1				

FIG. 44 EQUIPO ELECTRICO 2

ELECTRICAL 2



2DD1280-N440

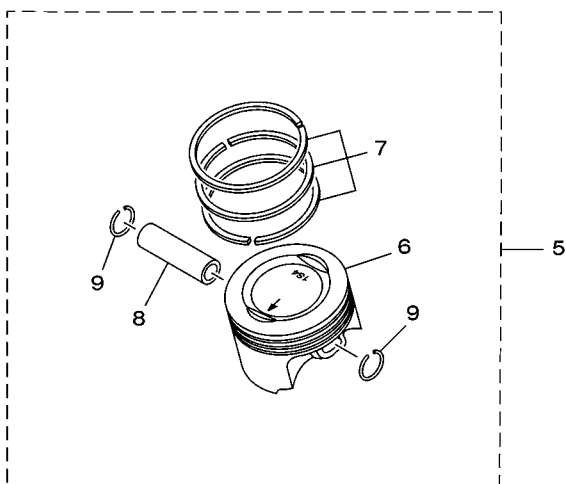
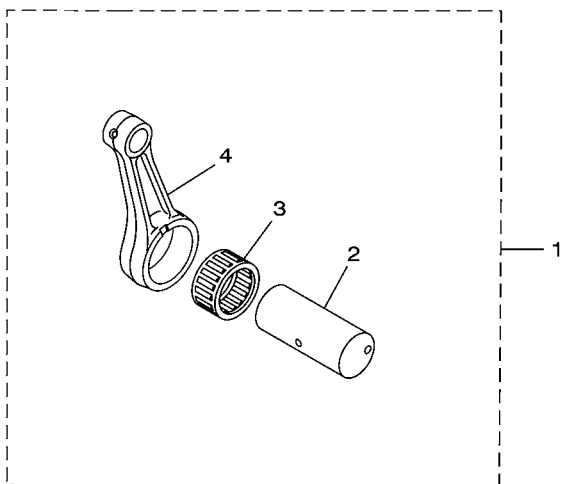
REF. Nº	CODIGO Nº PART NO.	DESCRIPCION DESCRIPTION	2DD3				OBSERVACIONES REMARKS
1	20C-H591A-00	UNIDAD CONTROL ENGINE CONTROL UNIT ASSY	1				
2	1S4-H5546-00	BANDA BAND	1				
3	53P-H2310-00	BOBINA DE ENCENDIDO COMPLETA IGNITION COIL ASSY	1				
4	5HH-H2370-01	TAPON DE BUJIA COMPLT PLUG CAP ASSY	1				
5	5VL-H2540-11	INTERRUPTOR NEUTRAL COMPL NEUTRAL SWITCH ASSY	1				
6	90430-10148	JUNTA GASKET	1				
7	90465-13W06	BRIDA CLAMP	8				
8	90464-15200	BRIDA CLAMP	2				
9	90464-12089	BRIDA CLAMP	2				
10	90464-20213	BRIDA CLAMP	1				
11	90464-13077	BRIDA CLAMP	2				
12	90464-13073	BRIDA CLAMP	1				
13	90464-25004	BRIDA CLAMP	3				
14	90464-08M07	BRIDA CLAMP	1				
15	90464-25098	BRIDA CLAMP	1				
16	90464-08007	BRIDA CLAMP	1				
17	90464-13249	BRIDA CLAMP	1				
18	90464-15195	BRIDA CLAMP	1				
19	4B4-H3350-00	RELE DE DESTELLADOR COMPL. FLASHER RELAY ASSY	1				
20	2DD-H3371-00	BOCINA HORN	1				
21	9580M-06010	TORNILLO BOLT, FLANGE	1				
22	23L-H5130-00	REFLECTOR TRASERO COMPLETO REAR REFLECTOR ASSY	1				
23	9570M-06500	TUERCA DE BRIDA NUT, FLANGE	1				





FIG. 47 PARTES OPCIONALES 1

OPTIONAL PARTS 1



44C3280-L440

REF. Nº	CODIGO Nº PART NO.	DESCRIPCION DESCRIPTION	20D3				OBSERVACIONES REMARKS
1	44C-11650-00	BIELA COMPLETA CONNECTING ROD ASSY	1				
2	1S4-11681-00	.PASADOR MANIVELA 1 .PIN, CRANK 1	1				
3	93310-63285	.COJINETE DE RODILLOS .BEARING	1				
4	44C-11651-00	.BIELA .ROD, CONNECTING	1				
5	1S4-11630-00	PISTON COMPLETO (NORMA) PISTON ASSY (STD)	1				
6	1S4-11631-10-A0	.PISTON (NORMA) .PISTON (STD)	1				
7	4XV-11603-00	.JUEGO DE ANILLOS (NORMA) .PISTON RING SET (STD)	1				
8	4XV-11633-00	.PASADOR, PISTON .PIN, PISTON	1				
9	90468-12069	.PRESILLA .CLIP	2				





INDICE NUMERICO  
NUMERICAL INDEX

CODIGO Nº PART NO.	REF. Nº	CODIGO Nº PART NO.	REF. Nº	CODIGO Nº PART NO.	REF. Nº	CODIGO Nº PART NO.	REF. Nº	CODIGO Nº PART NO.	REF. Nº	CODIGO Nº PART NO.	REF. Nº
5H0-11133-11	1 - 2	4B4-17460-00	48 - 9	5JW-2413B-00	46 - 3	5BN-81960-00	43 - 11	4B4-E3542-00	8 - 28	1S4-E6331-00	14 - 10
1S4-11181-10	1 - 6	1S4-18101-01	17 - 1	5RS-24188-00	25 - 18	4WA-81980-00	43 - 26	4B4-E3581-00	8 - 20		48 - 4
5XT-11186-00	1 - 24	5BP-18531-00	16 - 5	53P-24191-00	25 - 19	53P-82021-10	43 - 16	1S4-E3585-00	8 - 1	1S4-E6333-00	14 - 13
1S4-11531-10	3 - 23	4R8-21308-01	18 - 14	53P-24192-00	25 - 21	1AE-82151-00	43 - 28	4B4-E375A-02	9 - 1	1S4-E6337-00	14 - 14
5XT-11533-00	3 - 25	3TL-21708-00	20 - 4	1S4-24486-00	25 - 26	53P-82501-10	43 - 17	53P-E3910-10	25 - 23	1S4-E6351-00	14 - 12
1S4-11536-10	3 - 19	5JV-22141-00	21 - 6	53P-24602-10	25 - 5	4BH-82511-09	43 - 18	5D1-E4411-00	8 - 5		48 - 6
4XV-11603-00	3 - 12	30X-22178-00	18 - 10	4B4-25381-00	29 - 25	13S-82530-00	43 - 20	1S4-E4412-01	8 - 6	1S4-E6356-00	14 - 19
	47 - 7	5XT-22184-00	21 - 4	5XT-25802-50	30 - 6	3LD-82566-40	43 - 35	1S4-E4422-00	8 - 7	1S4-E6357-00	14 - 31
1S4-11630-00	47 - 5	53P-22210-10	22 - 1	3JD-25803-50	30 - 7	5VU-82576-01	43 - 30	1S4-E4437-00	8 - 9	1S4-E6358-00	14 - 18
1S4-11631-10-A0	3 - 11	53P-22216-00	22 - 2	3C5-25806-00	30 - 12	1S4-83591-01	43 - 1	4B4-E443E-00	8 - 16	1S4-E6371-00	14 - 7
	47 - 6	4AA-22259-40	22 - 6	5TG-2580E-00	34 - 6	4PS-83616-10	39 - 5	4B4-E4453-00	8 - 8	1S4-E6377-00	14 - 21
4XV-11633-00	3 - 13	53P-23102-10	24 - 1	3C5-2580W-10	30 - 5	1S4-83755-01	43 - 4	1S4-E4458-00	8 - 13	4B4-E6380-00	14 - 24
	47 - 8	53P-23103-10	24 - 22	2VN-2582A-50	34 - 10	1HP-83980-01	32 - 11	1S4-E4462-00	8 - 11	1S4-E6383-00	14 - 15
44C-11650-00	47 - 1	53P-23110-10	24 - 3	5XT-2582W-00	30 - 1	53P-84300-00	40 - 1	1S4-E4472-00	8 - 14	1S4-E6384-00	14 - 16
44C-11651-00	3 - 6		24 - 24	3XP-25852-50	34 - 15	4SV-84314-00	40 - 2	4B4-E4611-02	10 - 1	1S4-E6628-00	14 - 20
	47 - 4	3VD-23115-00	24 - 13	2VN-25854-00	34 - 16	4SV-84350-00	40 - 4	44C-E4613-00	10 - 15	4B4-E7121-00	15 - 7
1S4-11681-00	3 - 4		24 - 34	2VN-25855-00	34 - 17	5GJ-84397-00	40 - 3	4B4-E4628-11	10 - 2	4B4-E7131-00	15 - 5
	47 - 2	53P-23118-10	24 - 9	2VN-25866-00	34 - 12	2EK-85111-00	19 - 6	2DD-E4711-00	10 - 6	4B4-E7141-00	15 - 2
11H-12113-00	4 - 4		24 - 30	5TG-25894-00	34 - 14	1S4-E1111-00	1 - 1	53P-E4718-01	10 - 7	4B4-E7211-00	15 - 18
11H-12114-00	4 - 5	27D-2311H-00	24 - 10	4B4-25895-00	34 - 18	1S4-E111F-00	1 - 26	53P-E4728-00	10 - 14	4B4-E7221-00	15 - 11
4G0-12116-01	4 - 3		24 - 31	3SP-25914-51	30 - 14	1S4-E1145-00	5 - 6	4B4-E4803-00	8 - 25	4B4-E7231-00	15 - 14
4G0-12117-00	4 - 7	3VD-23125-10	24 - 12	3JD-25917-00	30 - 9	1S4-E1165-01	1 - 17	1S4-E4815-00	1 - 9	4B4-E7241-00	15 - 17
4G0-12118-00	4 - 8		24 - 33	3SP-25919-51	30 - 10	12B-E1166-00	1 - 20	4B4-E4871-00	1 - 7	1S4-E7402-00	15 - 10
5H0-12119-00	4 - 6	53P-23126-10	24 - 2	3SP-25924-51	30 - 13	1S4-E1185-01	1 - 15	4B4-E4882-00	8 - 32	1S4-E7411-00	15 - 1
36X-12151-00	4 - 9	53P-23136-10	24 - 23	3SP-25926-51	30 - 15	1S4-E1196-00	1 - 18	44C-E5113-00	12 - 13	1S4-E7558-00	15 - 22
5XT-12159-00	4 - 13	53P-23141-10	24 - 7	1UY-25937-51	30 - 8	1S4-E1311-00-A0	2 - 1	1S4-E5150-21	11 - 1	53P-E8110-00	17 - 9
5XT-12210-00	5 - 13		24 - 28	53P-26111-00	31 - 1	1S4-E1351-00	2 - 2	5HH-E5362-00	12 - 24	5HH-E8113-00	17 - 10
5XT-12241-01	5 - 12	5VU-23142-00	24 - 8	5BE-26243-00	31 - 2	1S4-E1400-11	3 - 1	12B-E5371-00	1 - 16	1S4-E8140-00	17 - 4
5XT-13161-01	6 - 16		24 - 29	53P-26302-00	31 - 9	1S4-E1412-00	3 - 2	53P-E5411-00	12 - 1	12B-E8511-10	16 - 2
5D3-13440-02	6 - 10	3VD-23144-00	24 - 16	53P-26335-00	31 - 10	44C-E1422-00	3 - 3	1S4-E5415-00	12 - 26	12B-E8512-10	16 - 3
4B4-13464-10	7 - 7		24 - 37	4SS-27218-00	34 - 8	1S4-E1454-00	3 - 20	4B4-E5418-00-35	12 - 14	12B-E8513-10	16 - 4
4B4-13465-10	7 - 8	5VU-23145-00	24 - 14	2YK-27222-00	34 - 9	12B-E1478-00	3 - 22	44C-E5421-00	12 - 16	53P-E8540-00	16 - 1
4B4-13930-00	9 - 2		24 - 35	3KW-27234-00	34 - 13	12B-E1496-00	3 - 24	1S4-E5441-00	11 - 10	53P-F1110-20	18 - 1
1S4-14104-00	9 - 7	53P-23151-00	24 - 4	4GY-27491-00	30 - 3	5BP-E1549-00	3 - 15	1S4-E5451-00	12 - 6	5RR-F118K-11	25 - 42
2S5-1410H-00	9 - 4		24 - 25	53P-28100-10	20 - 27	1S4-E2111-00	4 - 1	1S4-E5461-00	12 - 17	4B4-F1315-00	18 - 2
5CA-14147-00	9 - 3	3VD-23156-00	24 - 15	4K5-2814E-10	20 - 13	1S4-E2121-00	4 - 2		48 - 7	4B4-F1317-00	18 - 4
1S4-14216-00	9 - 5		24 - 36	4TP-28186-00	20 - 29	1S4-E2146-00	4 - 11	12B-E5512-00	13 - 1	53P-F137F-00	35 - 24
1S4-14451-00	8 - 12	53P-23157-00	24 - 5	4KN-2836B-10	19 - 10	1S4-E2156-00	4 - 10	12B-E5517-00	13 - 3	53P-F137G-00	35 - 25
1S4-14452-00	8 - 10		24 - 26		45 - 4	1S4-E2170-10	5 - 1	1S4-E5521-00	13 - 2	53P-F137N-C0	46 - 1
1JK-14477-00	8 - 18	53P-23171-01	24 - 6		46 - 4	5BP-E2176-00	5 - 5	1S4-E5522-00	13 - 4	53P-F137N-D0	46 - 1
4EL-14714-00	10 - 13		24 - 27	53P-28381-00	35 - 1	1S4-E2213-00	5 - 14	1S4-E6150-00	14 - 6	53P-F137P-C0	46 - 2
4B4-14881-00	8 - 30	27D-23173-00	24 - 19	1S4-81168-00	43 - 5	1S4-E2231-00	5 - 11	1S4-F137A-00	14 - 17	53P-F137P-D0	46 - 2
1S4-15515-00	13 - 5		24 - 40	18P-81801-00	37 - 2	44C-E3300-00	6 - 1	1S4-E6307-00	14 - 11	53P-F137P-E0	46 - 1
5BP-15590-00	13 - 8	53P-23191-01	24 - 17	18P-81826-00	37 - 3	12B-E3326-10	6 - 2		48 - 5		46 - 2
5XT-16111-00	14 - 1		24 - 38	4XV-8182A-00	37 - 4	1S4-E3329-00	6 - 6	1S4-E6321-00	14 - 9	4B4-F139U-00	18 - 16
1S4-17151-00	15 - 6	1UF-23434-00	23 - 8	4B5-81844-00	37 - 6	5HH-E3411-01	6 - 9		48 - 3	53P-F1511-00	19 - 1
1S4-17251-00	15 - 16	3Y6-23442-00-35	23 - 12	1FK-81847-00	37 - 5	1S4-E3447-00	6 - 11	1S4-E6324-00	14 - 8	53P-F1611-00	19 - 8
4B4-17460-00	15 - 26	5JW-2413B-00	45 - 3	4SV-81940-12	43 - 27	53P-E3470-00	7 - 1		48 - 2	53P-F1639-00	19 - 9



INDICE NUMERICO  
NUMERICAL INDEX

CODIGO N° PART NO.	REF. N°	CODIGO N° PART NO.	REF. N°	CODIGO N° PART NO.	REF. N°	CODIGO N° PART NO.	REF. N°	CODIGO N° PART NO.	REF. N°	CODIGO N° PART NO.	REF. N°
4B4-F1642-00	19 - 18	53P-F41B1-00	25 - 31	5HH-F5917-00	28 - 15	44C-H1890-10	37 - 1	44C-H3616-10	39 - 6	90111-06038	20 - 14
53P-F1661-10	19 - 20	53P-F4230-40	45 - 1	5RM-F5921-00	28 - 10	4B4-H1980-00	43 - 23	1S4-H3912-00	42 - 2	90116-08023	1 - 29
53P-F1662-10	19 - 21	53P-F4250-40	45 - 2	5HH-F5924-00	28 - 9	4B4-H1980-10	43 - 24	4B4-H3922-10	32 - 8	90116-08812	29 - 17
2DD-F1668-00	21 - 23	53P-F4318-00	25 - 32	5HH-F5926-51	28 - 12	44C-H2100-01	43 - 13	4LR-H3945-00	42 - 3	90119-06217	26 - 4
5RM-F1685-10	19 - 15	53P-F4491-00	25 - 25	5HH-F5934-00	28 - 8	53P-H2115-00	43 - 14	2DD-H3972-00	42 - 11	90119-08212	25 - 20
53P-F1711-00	20 - 1	53P-F470F-00	26 - 2	5HH-F5937-00	28 - 11	53P-H2116-00	43 - 15	53P-H3975-00	42 - 15	90123-08046	42 - 5
4B4-F1719-00	20 - 16	53P-F4730-00	26 - 1	5HH-F5961-00	28 - 14	1S4-H2123-00	20 - 23	4B4-H3980-00	42 - 10	90149-06154	18 - 15
5RM-F1719-00	19 - 11	53P-F4737-00	26 - 3	4B4-F6241-00	31 - 5	1C6-H2131-00	43 - 34	53P-H4527-00	40 - 5	90149-06264	10 - 8
53P-F171A-00-P2	25 - 29	1S4-F4741-00	25 - 28	4B4-F6242-00	31 - 3	4B4-H2131-00	20 - 21	5RM-H4527-00	41 - 6	90149-06302	35 - 8
53P-F1721-00	20 - 11		25 - 41	2TY-F6249-00	31 - 4	1S4-H2151-00	43 - 22	21D-H4710-00	41 - 1	90150-05024	35 - 2
4B4-F1746-00	20 - 26	53P-F474A-00	18 - 17	1S4-F6280-01	31 - 12	1S4-H2151-10	43 - 25	5HH-H4714-00	41 - 3	90153-06029	1 - 4
1C6-F174X-00	20 - 22	53P-F474W-00	18 - 18	1C6-F6281-00	31 - 6	53P-H2310-00	44 - 3	5RM-H4721-00	41 - 2	90159-05065	25 - 33
4B4-F174X-00	20 - 24	4AN-F5111-10-35	27 - 1	1C6-F6282-00	31 - 7	5HH-H2370-01	44 - 4	5RM-H4723-00	41 - 5	90159-06060	34 - 31
4B4-F174Y-00	20 - 25	4B4-F514A-00	27 - 11	1S4-F6290-01	31 - 13	1S4-H2509-00	43 - 10	23L-H5130-00	44 - 22	90164-05014	39 - 7
53P-F1773-00	20 - 9	1S4-F5181-00	27 - 13	5HH-F6332-00	32 - 7	1S4-H252U-00	43 - 37	1S4-H5546-00	44 - 2	90167-05080	35 - 18
4B4-F177G-00	20 - 18	2TY-F5195-00	29 - 12	1S4-F6342-00	31 - 11	5VL-H2540-11	44 - 5	4B4-H5752-00	25 - 24	90169-05003	35 - 5
53P-F2110-00	21 - 1	5HH-F5195-01	27 - 7	4B4-F7211-00	34 - 1	4B4-H2541-00	43 - 3	4B4-H591A-00	44 - 1	90170-06128	4 - 14
5L9-F2128-00	21 - 5	5RM-F5196-00	27 - 6	5RM-F7261-00	34 - 2	2DD-H2590-00	43 - 21	1S4-H6251-00	43 - 6	90170-12370	3 - 29
4B4-F2151-00	21 - 9	4B4-F5311-00-35	29 - 1	4D8-F7311-00	33 - 6	1B2-H2599-00	42 - 14	4B4-W001A-10	48 - 8	90170-16800	14 - 5
1S4-F2174-00	29 - 22	4B4-F5317-00	29 - 2	4B4-F7315-00	33 - 12	2TY-H2911-00	42 - 1	5TG-W0042-50	34 - 7	90170-16801	14 - 23
4B4-F217A-00	21 - 15	5HH-F536G-00	28 - 13	4VW-F7411-00	33 - 2	2TY-H2915-01	42 - 7	5HH-W0048-00	28 - 7	90170-22187	20 - 5
53P-F217F-00	21 - 16	4B4-F5383-00	29 - 20	4B4-F7412-01	33 - 1	53P-H3310-00	38 - 1	1UY-W0048-50	30 - 11	90176-22081	23 - 9
5RM-F2184-00	18 - 11	1S4-F5388-00	29 - 21	5RM-F7413-00	49 - 2	42K-H3311-00	38 - 4	1S4-WE631-00	48 - 1	90179-05003	35 - 3
5RM-F2311-00	21 - 12	4B4-F5391-00	29 - 10	4VW-F7421-00	33 - 16		38 - 8	5RM-WF741-00	49 - 1	90179-05523	25 - 34
2DD-F317E-00	19 - 7	4B4-F5392-00	29 - 11	4B4-F7422-00	33 - 15		38 - 12	90101-10812	33 - 7	90179-08148	42 - 6
53P-F317E-00	23 - 23	4B4-F5396-00	29 - 8	5HH-F7431-00	33 - 20		38 - 16	90101-10852	5 - 8	90179-10658	18 - 9
4B4-F3340-00	24 - 43	4B4-F5397-00	29 - 9	5RM-F7432-10-33	33 - 26	18D-H3312-00	38 - 2	90105-06109	28 - 2	90179-18801	15 - 28
1S4-F3416-00	23 - 3	4B4-F5440-00	29 - 16	5HH-F7433-00	33 - 21		38 - 6	90105-06836	37 - 8	90179-25W22	23 - 4
5HH-F3418-00	23 - 6		48 - 10	5HH-F7441-00	33 - 28	1S4-H3312-00	38 - 11	90105-08117	1 - 11	90183-04039	43 - 33
4B4-F3430-01-35	23 - 7	5RM-F5802-00	28 - 4	4B4-F7442-00-33	33 - 34		38 - 15	90105-10011	22 - 7	90183-05042	35 - 19
3V9-F3441-10-35	23 - 15	5RM-F5803-00	28 - 5	5HH-F7444-00	33 - 29	5RM-H3316-00	38 - 19	90105-10110	18 - 6	90183-05076	25 - 40
53P-F4110-00	25 - 1	53P-F5805-00	28 - 6	5HH-F7445-01	33 - 22	18D-H3318-00	38 - 9	90105-10118	18 - 7		35 - 31
1S4-F411J-00	25 - 35	5RM-F5807-00	32 - 2		33 - 30	53P-H3320-00	38 - 5	90105-10430	3 - 16	90183-06023	19 - 16
53P-F4129-00-P4	25 - 36	53P-F580T-00	28 - 3	53P-F8173-00	20 - 3	5HH-H3321-01	38 - 18	90105-10638	28 - 16	90185-10012	33 - 10
53P-F4129-00-P5	25 - 36	4B4-F582T-01	28 - 1	2DD-F8199-S1	20 - 28	4B4-H3330-02	38 - 10	90105-12030	21 - 20	90185-12007	21 - 7
53P-F4129-00-P6	25 - 36	4B4-F583T-20	32 - 1	53P-F8356-01	35 - 13	18D-H3333-00	38 - 3	90109-06190	17 - 6	90185-14112	27 - 15
53P-F4129-00-P7	25 - 36	3GM-F5852-00	32 - 4	53P-F835G-00	35 - 4		38 - 7	90109-06202	20 - 19		29 - 28
53P-F4139-00-P4	25 - 37	5HH-F5854-00	32 - 3	53P-F836K-00	35 - 17	4B4-H3340-02	38 - 14	90109-08015	30 - 2	90201-04804	43 - 32
53P-F4139-00-P5	25 - 37	5LW-F585B-00	32 - 13	53P-F8371-00	35 - 27	4B4-H3350-00	44 - 19	90109-08072	14 - 25	90201-05016	10 - 5
53P-F4139-00-P6	25 - 37	18D-F5867-00	32 - 6	53P-F837L-00	35 - 28	5HH-H3359-02	38 - 20	90109-08196	43 - 19	90201-05017	10 - 4
53P-F4139-00-P7	25 - 37	53P-F5872-10	32 - 14	53P-F837M-00	35 - 29	2DD-H3371-00	44 - 20	90110-05112	25 - 6	90201-05036	40 - 8
53P-F414F-00	25 - 30	4B4-F5873-10	34 - 24	53P-F838N-00	35 - 21	53P-H3500-00	39 - 1	90110-06861	19 - 4	90201-06018	1 - 14
2TY-F4181-00	10 - 11	4B4-F5875-00	34 - 29	53P-F838R-00	35 - 22	53P-H3519-00	39 - 8	90110-08080	13 - 9	90201-06380	41 - 7
4B4-F4181-00	25 - 8	53P-F5875-00	23 - 17	53P-F842M-00-P0	35 - 6	44C-H353E-00	39 - 3	90110-10N52	24 - 20	90201-064H0	20 - 15
4B4-F4182-00	25 - 12	53P-F5876-00	23 - 19	53P-F842N-00-P0	35 - 7	12B-H354W-00	43 - 8		24 - 41		35 - 11
4B4-F4183-00	25 - 16	53P-F587A-00	23 - 21	44C-H1410-01	36 - 2	53P-H3570-00	39 - 2	90111-05003	25 - 38	90201-08083	34 - 22
4B4-F4186-00	25 - 11	53P-F5887-00	32 - 18	44C-H1450-00	36 - 1	44C-H3572-00	39 - 4		35 - 30	90201-08326	10 - 18
4B4-F4187-00	25 - 15	2DP-F589F-00	32 - 9	53P-H1815-00	37 - 7	53P-H3614-00	8 - 34	90111-06038	19 - 2	90201-08609	1 - 12

INDICE NUMERICO  
NUMERICAL INDEX

CODIGO Nº PART NO.	REF. Nº	CODIGO Nº PART NO.	REF. Nº	CODIGO Nº PART NO.	REF. Nº	CODIGO Nº PART NO.	REF. Nº	CODIGO Nº PART NO.	REF. Nº	CODIGO Nº PART NO.	REF. Nº
90201-100E9	22 - 9	90387-06200	19 - 13	90464-13077	44 - 11	91314-06020	6 - 15	93210-35N02	24 - 32	95024-06016	12 - 15
90201-10118	32 - 16	90387-06681	19 - 3	90464-13249	35 - 36	91314-06025	5 - 15	93210-39700	8 - 2		12 - 27
	34 - 26	90387-06876	7 - 3		44 - 17		7 - 10	93210-54001	1 - 25	95024-06020	1 - 23
90201-10141	23 - 13	90387-06W41	21 - 10	90464-14009	35 - 35	91314-06065	2 - 3	93210-54175	6 - 12	95024-06025	12 - 19
90201-101J1	10 - 20	90387-06W62	21 - 14	90464-15195	44 - 18	91314-06070	6 - 14	93210-74M68	12 - 28	95024-06030	12 - 9
	33 - 8	90387-08024	18 - 12	90464-15200	44 - 8	91314-08045	1 - 13	93211-05471	1 - 22	95024-06035	12 - 20
90201-102R1	3 - 17	90387-10003	33 - 9	90464-20213	44 - 10	91317-06014	43 - 7	93306-003YU	15 - 9	95024-06040	12 - 8
90201-108C6	5 - 9	90387-1001B	20 - 2	90464-25004	44 - 13	91317-06020	8 - 3	93306-005Y9	5 - 2	95024-06045	11 - 3
90201-12688	21 - 21		20 - 12	90464-25098	44 - 15	91317-08016	10 - 17	93306-203XD	15 - 23	95024-06050	12 - 10
90201-12W69	21 - 8	90387-1005B	34 - 28	90465-13152	25 - 17	91317-08020	33 - 27	93306-205XD	15 - 24		12 - 21
90201-145M7	29 - 27	90387-10815	35 - 9	90465-13W06	44 - 7		33 - 35	93306-252Y4	5 - 3	95024-06055	11 - 6
90201-152L7	29 - 26	90387-12056	21 - 19	90465-20801	12 - 11	9131L-06016	1 - 8	93306-252Y5	27 - 2		12 - 22
90201-15813	27 - 14	90387-1210W	22 - 5	90467-08092	8 - 29	9131M-05012	12 - 12		29 - 4	95024-06060	11 - 4
90201-177G4	15 - 19	90387-15W35	29 - 19	90467-11106	8 - 17		36 - 4	93306-272Y4	15 - 8	95024-06070	11 - 5
90201-22018	23 - 10	90387-15W36	27 - 12	90467-12053	1 - 21	9131M-06010	49 - 3	93306-302X6	29 - 3	95024-08035	23 - 16
90201-225A4	20 - 7	90387-22027	15 - 15	90467-12085	34 - 19	9131M-06030	36 - 3	93306-302X8	3 - 21	95027-06010	11 - 13
90201-25291	13 - 6	90401-08802	6 - 19	90467-13062	8 - 31	91401-16012	34 - 23	93306-378Y2	3 - 10		23 - 22
90202-05180	25 - 39	90401-10038	34 - 27	90467-15054	8 - 33	91401-25015	33 - 5	93310-225N0	13 - 7	95027-06012	34 - 30
90202-26142	23 - 5	90401-10159	32 - 15	90467-18196	8 - 21		33 - 19	93310-63239	3 - 5	95027-06016	30 - 4
90206-14001	34 - 3		34 - 25	90468-12069	3 - 14	92012-06035	6 - 7	93310-63285	47 - 3	95027-06020	7 - 6
90209-18208	15 - 3	90401-10817	6 - 17		47 - 9	92017-06010	39 - 10	93315-11206	14 - 30	95027-08035	24 - 44
90209-22191	15 - 12	90430-06014	1 - 5	90468-20196	34 - 4	92017-08025	34 - 20	93315-31759	21 - 17	95027-08040	23 - 11
90214-16063	14 - 3		11 - 7	90480-01868	35 - 16	92017-10016	10 - 19	93332-000Y5	23 - 1	9502M-06008	43 - 29
90215-12272	3 - 28		12 - 23	90480-10334	19 - 12	92902-08200	6 - 4	93399-99931	23 - 2	9502M-06010	1 - 19
90215-16293	14 - 4	90430-06156	6 - 8		20 - 17	9290L-06200	33 - 24	93410-17037	15 - 20	9502M-06012	1 - 27
90215-16800	14 - 22	90430-08119	6 - 20	90480-12320	20 - 10		33 - 32		43 - 9	9502M-08040	10 - 12
90215-23265	15 - 27		14 - 26	90480-12581	10 - 10	9290M-05100	42 - 9	93410-22039	15 - 4	9530L-08600	29 - 24
90240-07105	3 - 7	90430-08204	43 - 2	90480-14229	40 - 6	9290M-08600	29 - 23	93440-10085	1 - 3	95602-06100	32 - 10
90240-08124	34 - 21	90430-10148	44 - 6	90480-14555	39 - 9	9290M-10200	33 - 14	93440-25084	15 - 13	95607-06100	42 - 4
90240-08W04	33 - 4	90430-10171	6 - 18	90480-15397	35 - 10	93102-12224	14 - 29	93511-32017	14 - 32	95607-08200	29 - 18
	33 - 18		24 - 21	90480-16802	7 - 2	93102-14209	17 - 8	93602-13177	3 - 9	95607-10200	23 - 14
90249-06220	33 - 23		24 - 42	90480-24186	20 - 6	93102-25226	15 - 25	93603-12803	6 - 3	95612-10100	22 - 8
	33 - 31	90430-12213	11 - 15	90501-07834	3 - 8	93106-17801	21 - 18	93604-10011	5 - 7	95617-12100	21 - 22
90269-07077	35 - 20	90445-05807	24 - 45	90501-22721	3 - 26	93106-18002	22 - 4	93605-10090	3 - 27	95704-06500	19 - 5
	35 - 32	90450-41001	24 - 18	90506-23801	34 - 5	93106-20021	27 - 4	93608-43228	17 - 7	95704-08500	10 - 16
90269-08001	19 - 19		24 - 39	90506-35473	33 - 11	93106-22801	29 - 6	93700-06803	21 - 2	9570M-06500	8 - 27
90269-08066	20 - 20	90450-46001	8 - 22	90508-203B3	14 - 27	93106-26803	29 - 5	94108-21804	27 - 8		41 - 8
90280-05048	3 - 18	90450-55003	8 - 4	90508-20W07	33 - 3	93210-07135	6 - 13	94112-18802	29 - 13		44 - 23
90282-05013	3 - 30	90461-08001	11 - 8		33 - 17	93210-09350	4 - 12	94210-18W50	29 - 14	9570M-08500	38 - 21
90282-05077	14 - 2	90462-08225	11 - 9	90508-26020	17 - 5	93210-10096	7 - 5	94227-21W51	27 - 9	95807-06010	8 - 35
90340-12806	11 - 14	90462-10215	11 - 12	90508-32139	17 - 2	93210-10197	7 - 11	94325-18801	29 - 15	95807-06012	19 - 14
90340-14W02	12 - 4	90464-05003	35 - 33	90520-02831	25 - 2	93210-11453	5 - 4	94325-21117	27 - 10		21 - 13
90340-32W03	12 - 2	90464-08007	44 - 16	90520-02832	25 - 4	93210-13657	2 - 4	94416-21800	27 - 5		32 - 17
90386-18004	22 - 3	90464-08M07	44 - 14	90520-02833	25 - 3	93210-14369	12 - 5	94421-18800	29 - 7	95807-06020	21 - 11
90386-18099	21 - 3	90464-09026	35 - 34	90520-17800	20 - 8	93210-15620	34 - 11	94568-H1106	29 - 29	9580M-06010	8 - 24
90387-06023	10 - 9	90464-12045	32 - 19	90560-15290	27 - 3	93210-19123	12 - 25		48 - 11		44 - 21
90387-06028	25 - 9	90464-12089	44 - 9	91312-05010	25 - 7	93210-32172	12 - 3	94582-19104	5 - 10	9580M-06014	8 - 23
	25 - 13	90464-13073	44 - 12		25 - 27	93210-35N02	24 - 11	94700-00822	1 - 28		19 - 17

INDICE NUMERICO  
NUMERICAL INDEX

CODIGO N° PART NO.	REF. N°	CODIGO N° PART NO.	REF. N°	CODIGO N° PART NO.	REF. N°	CODIGO N° PART NO.	REF. N°	CODIGO N° PART NO.	REF. N°	CODIGO N° PART NO.	REF. N°
9580M-06020	43 - 12	99530-10114	7 - 9								
9580M-06030	25 - 10		11 - 2								
	25 - 14		12 - 7								
95812-06016	11 - 11		12 - 18								
95817-06010	23 - 18	99530-14016	1 - 10								
	23 - 20		11 - 16								
	35 - 26										
95817-06012	35 - 14										
95817-06025	7 - 4										
95817-08035	35 - 15										
95817-10016	18 - 5										
95817-10025	33 - 13										
95817-10030	33 - 36										
95817-10080	18 - 3										
95817-10150	18 - 8										
95822-06020	9 - 6										
95827-08012	25 - 22										
95827-08014	18 - 20										
95827-08040	18 - 13										
95827-08065	18 - 19										
97007-06090	8 - 26										
97017-06020	17 - 11										
9701M-06014	5 - 16										
9702M-05020	42 - 8										
97602-04312	32 - 12										
97707-50016	35 - 12										
	35 - 23										
	40 - 7										
97707-50020	8 - 15										
9770M-04025	41 - 4										
9770M-06025	38 - 13										
	38 - 17										
98507-04025	43 - 31										
98507-05016	43 - 36										
98507-05018	42 - 16										
9850M-05030	42 - 12										
9850M-05040	42 - 13										
9851M-05020	31 - 8										
98707-04012	32 - 5										
9870M-06012	15 - 21										
9890M-06016	8 - 19										
98980-06012	10 - 3										
99001-05600	33 - 25										
	33 - 33										
99001-12600	17 - 3										
99009-08400	6 - 5										
99009-20500	14 - 28										
99244-00160	21 - 24										